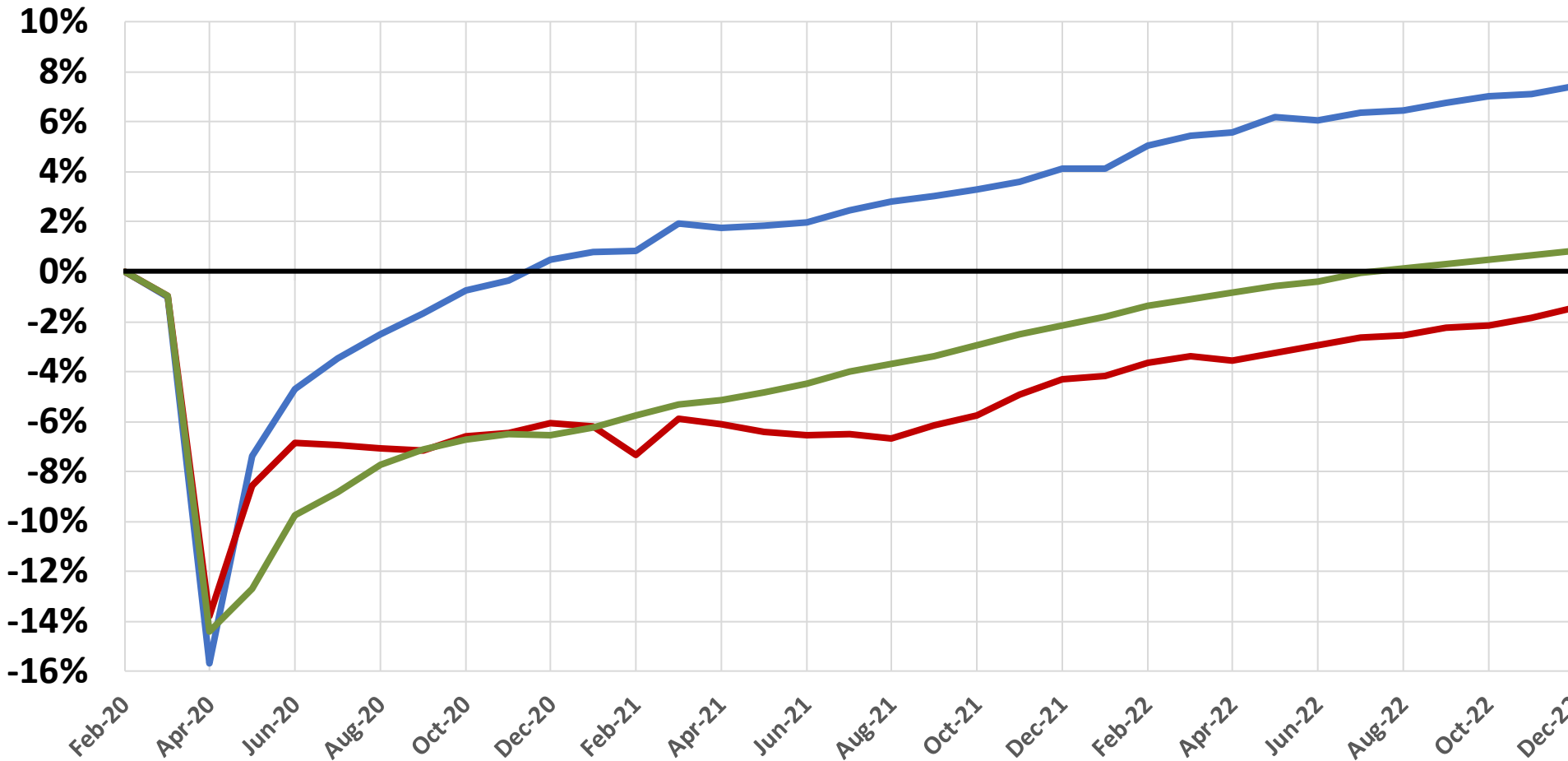


# Total nonfarm & construction employment, Feb. 2020–Dec. 2022

cumulative change (seasonally adjusted)



**Change since Feb. 2020:**  
Number Percent



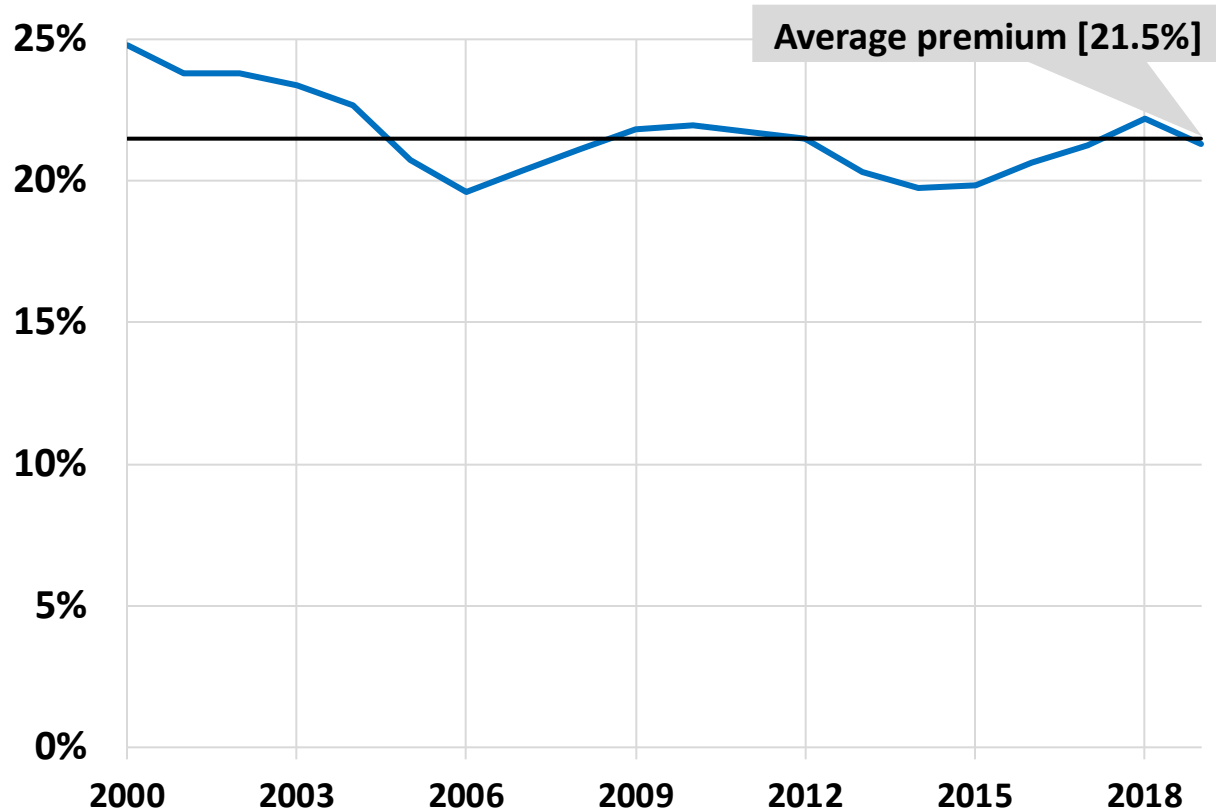
<b>Residential Construction</b>	<b>221,000</b>	<b>7.4%</b>
<b>Total Nonfarm</b>	<b>1,239,000</b>	<b>0.8%</b>
<b>Nonresidential Construction</b>	<b>-68,400</b>	<b>-1.5%</b>

# Construction wage “premium” vs. total private sector

Excess of average hourly earnings for production/ nonsupervisory employees in construction vs. private sector



## Annual premium, 2000–2019



## Monthly premium, Jan 2020–Dec 2022 (seasonally adjusted)

