



AGC
THE CONSTRUCTION
ASSOCIATION

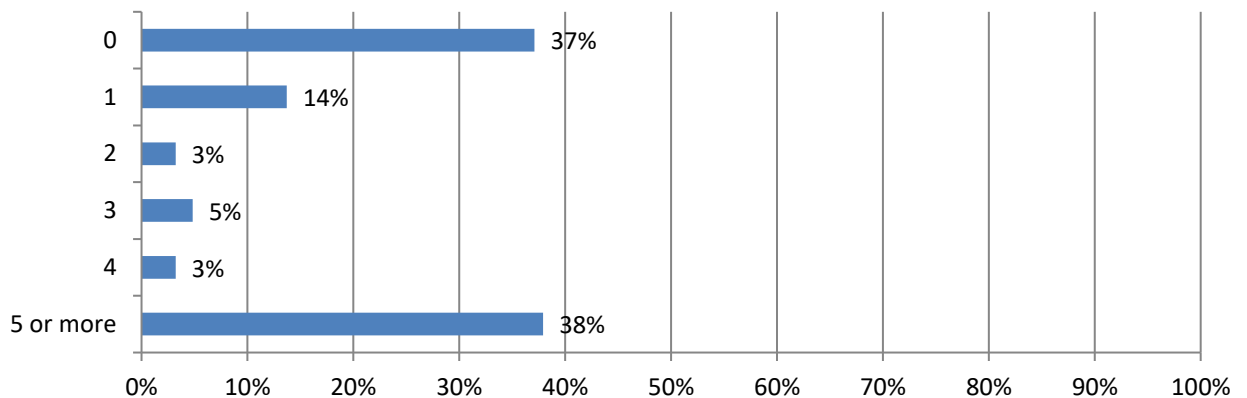


2026 Work Zone Awareness Survey Results

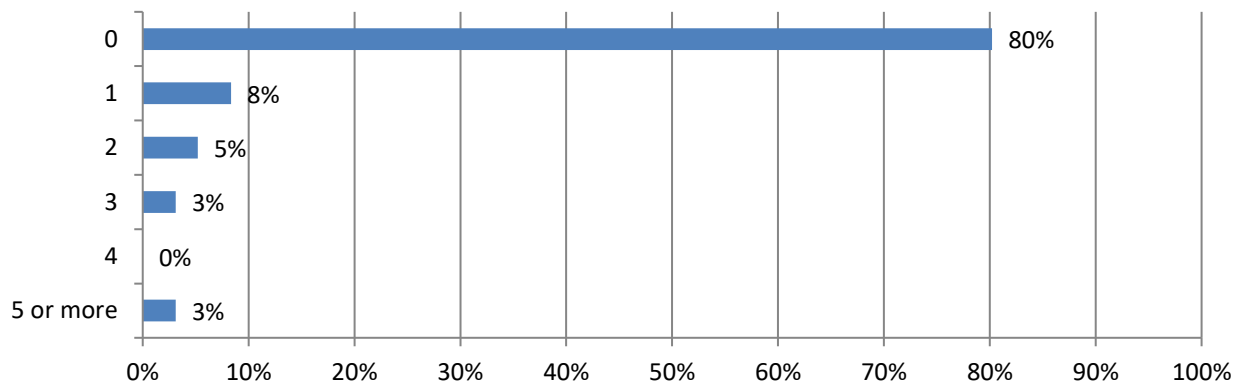
South Results

Total 163 responses; Responses varied for some questions. Percentages are based on responses to each question and may not sum to 100 due to rounding (total specified in some questions).

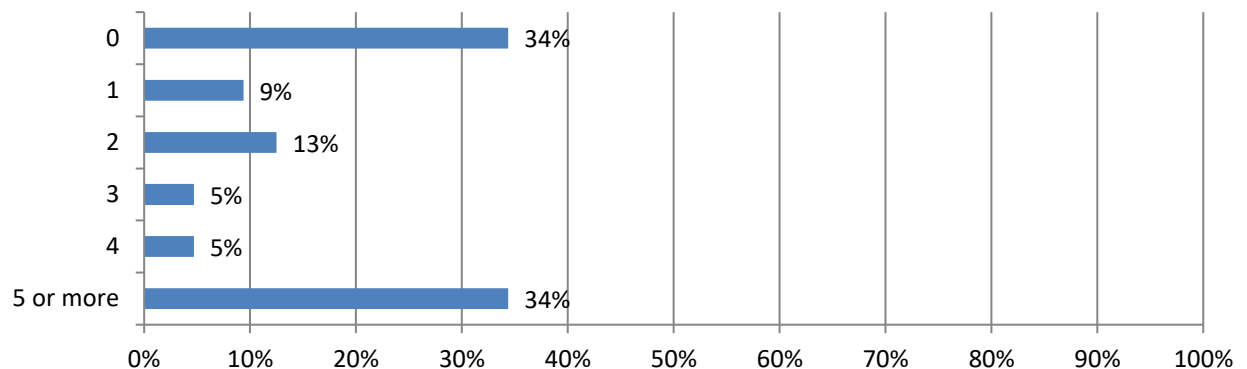
1. In the past 12 months, how many crashes involving a motor vehicle have occurred at a highway work zone where your firm operates? (137 Responses)



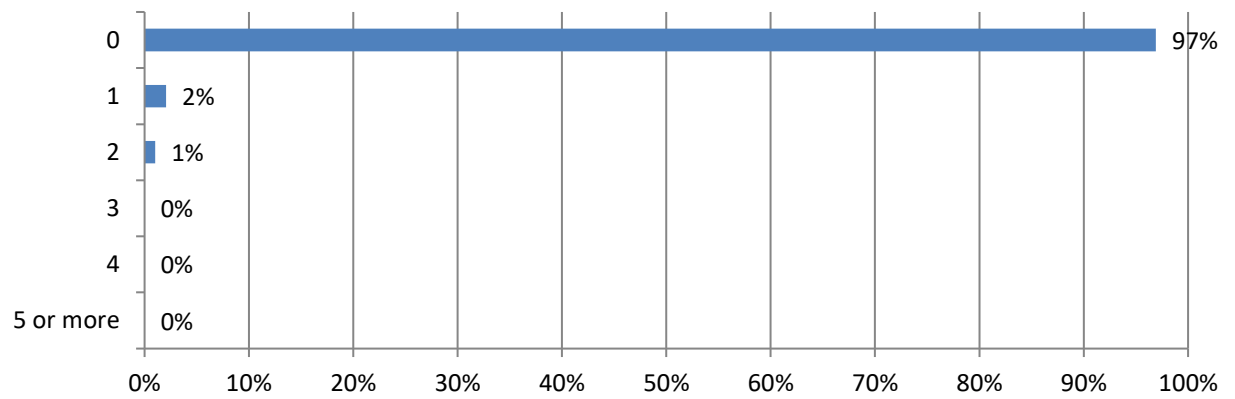
2. How many construction workers were injured in these crashes? (112 Responses)



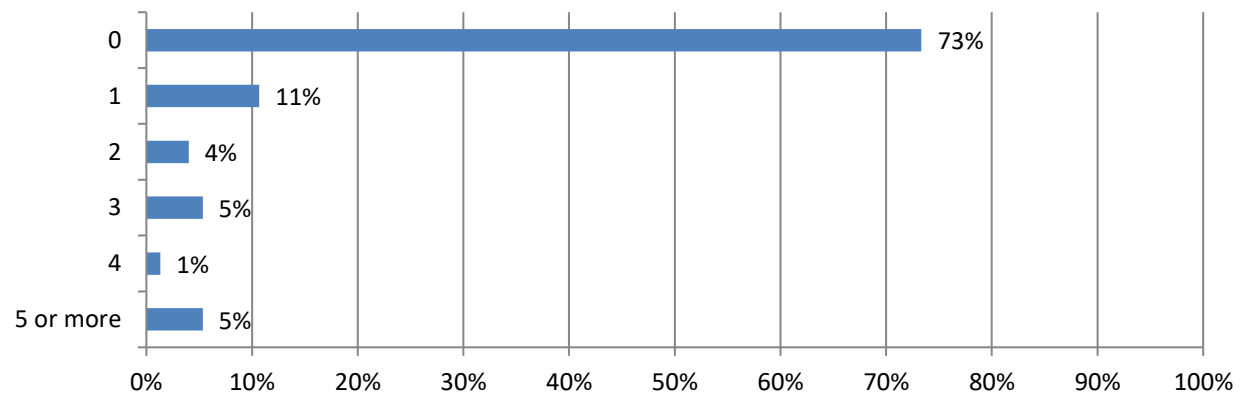
3. How many drivers or passengers were injured in these crashes? (109 Responses)



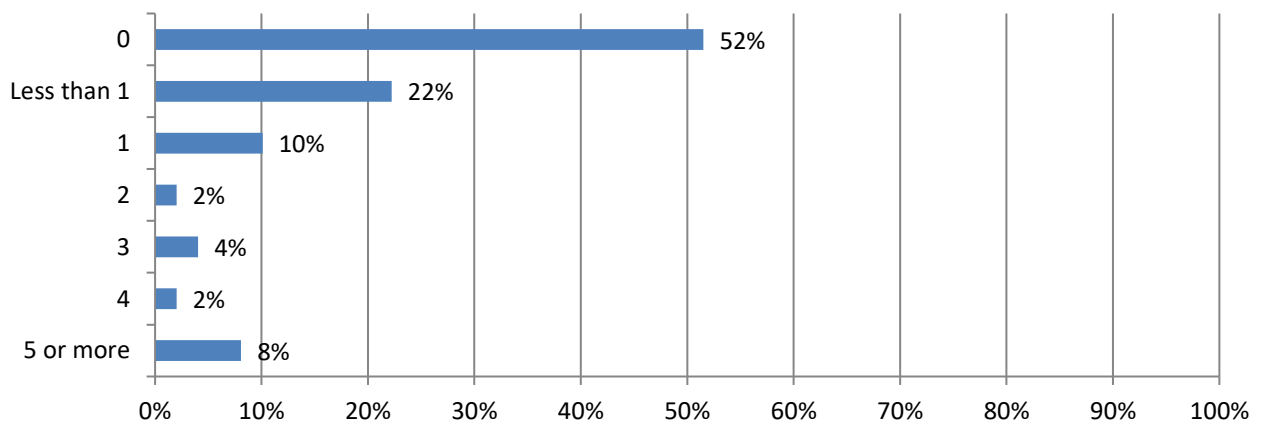
4. How many construction worker fatalities resulted from these crashes? (111 Responses)



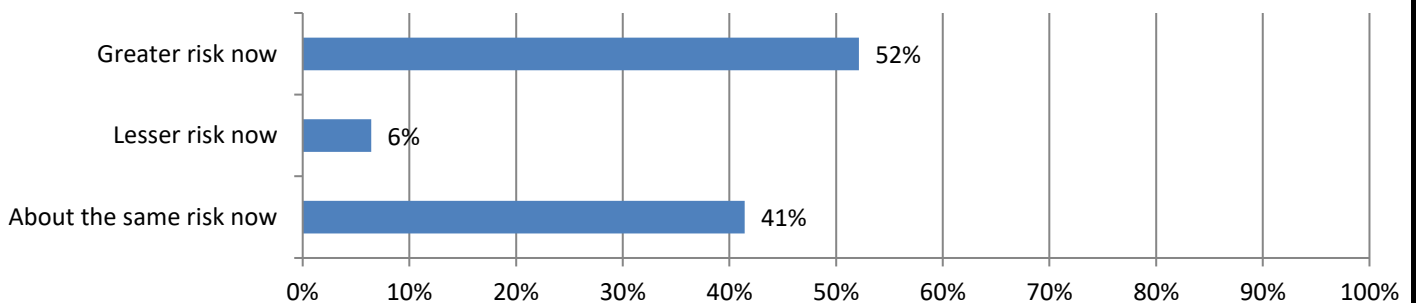
5. How many driver or passenger fatalities resulted from these crashes? (107 Responses)



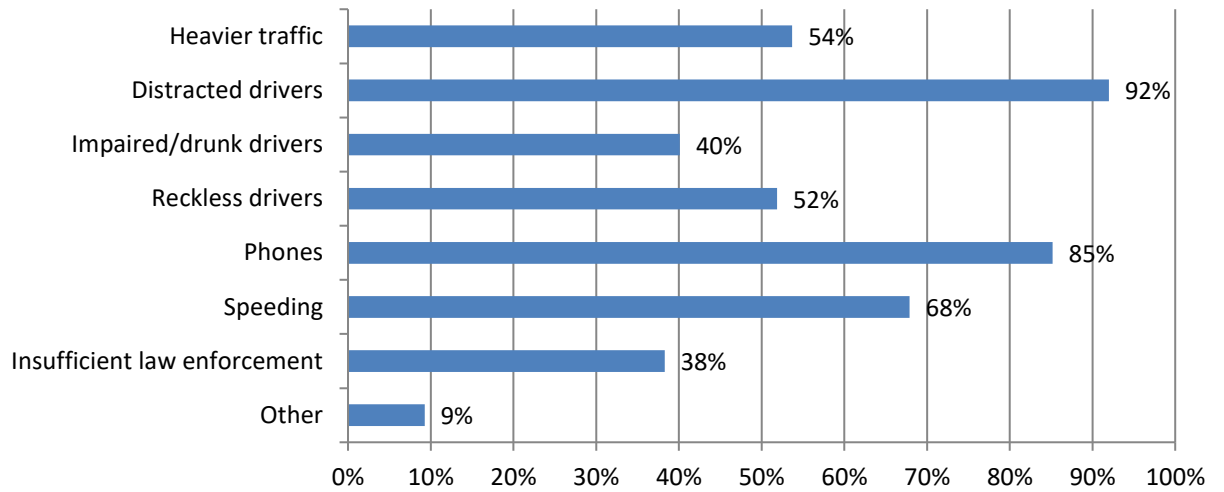
6. How many days have your firm's projects been delayed because of these crashes? (112 Responses)



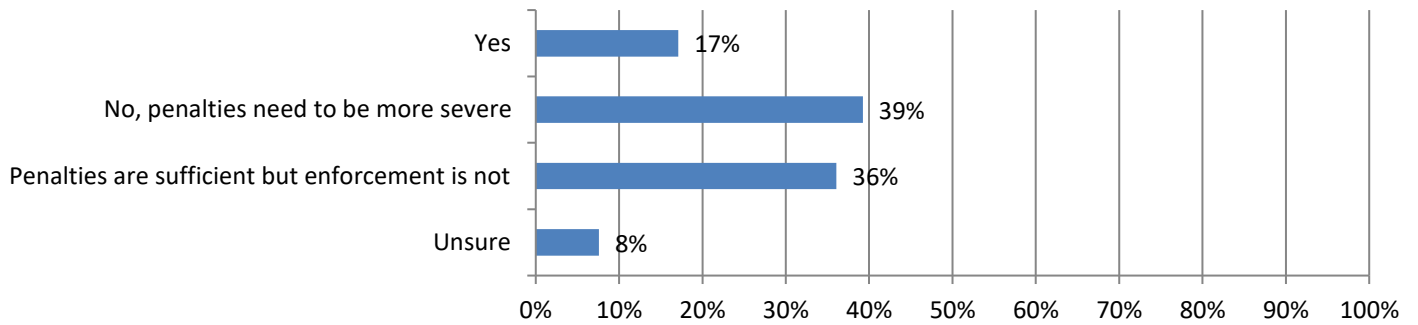
7. How much of a risk are highway work zone crashes now compared to one year ago? (153 Responses)



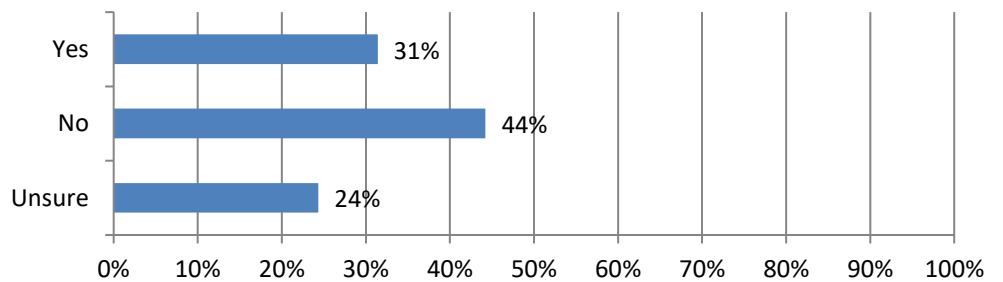
8. Which of the following do you think are the main reasons that contribute to highway work zone crashes and/or intrusions? (162 Responses)



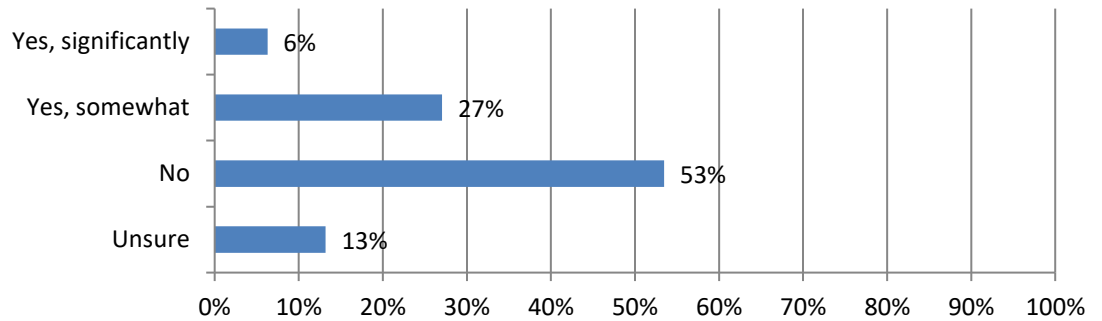
9. Are the current penalties for moving violations in highway work zones sufficient to deter unsafe driving behaviors in the states where you work? (158 Responses)



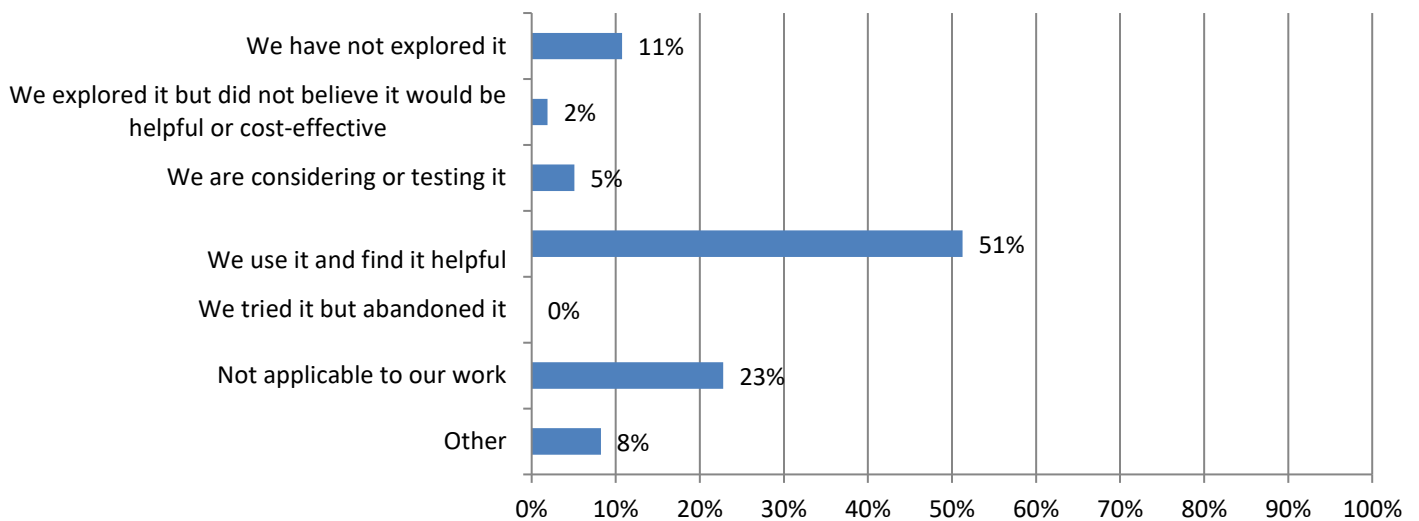
10. Are enforcement efforts currently helping deter unsafe driving behaviors in highway work zones in the states where you work? (156 Responses)



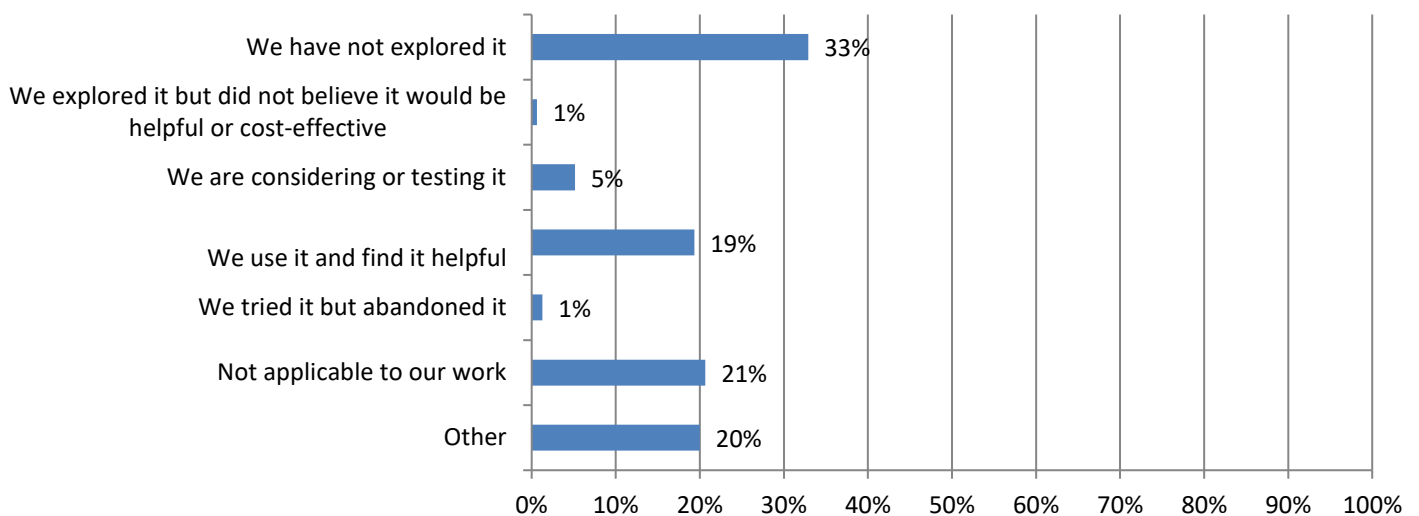
11. Have increases in material prices affected your firm's ability to purchase equipment or materials used for highway work zone safety (e.g., barriers, signage, protective devices)? (159 Responses)



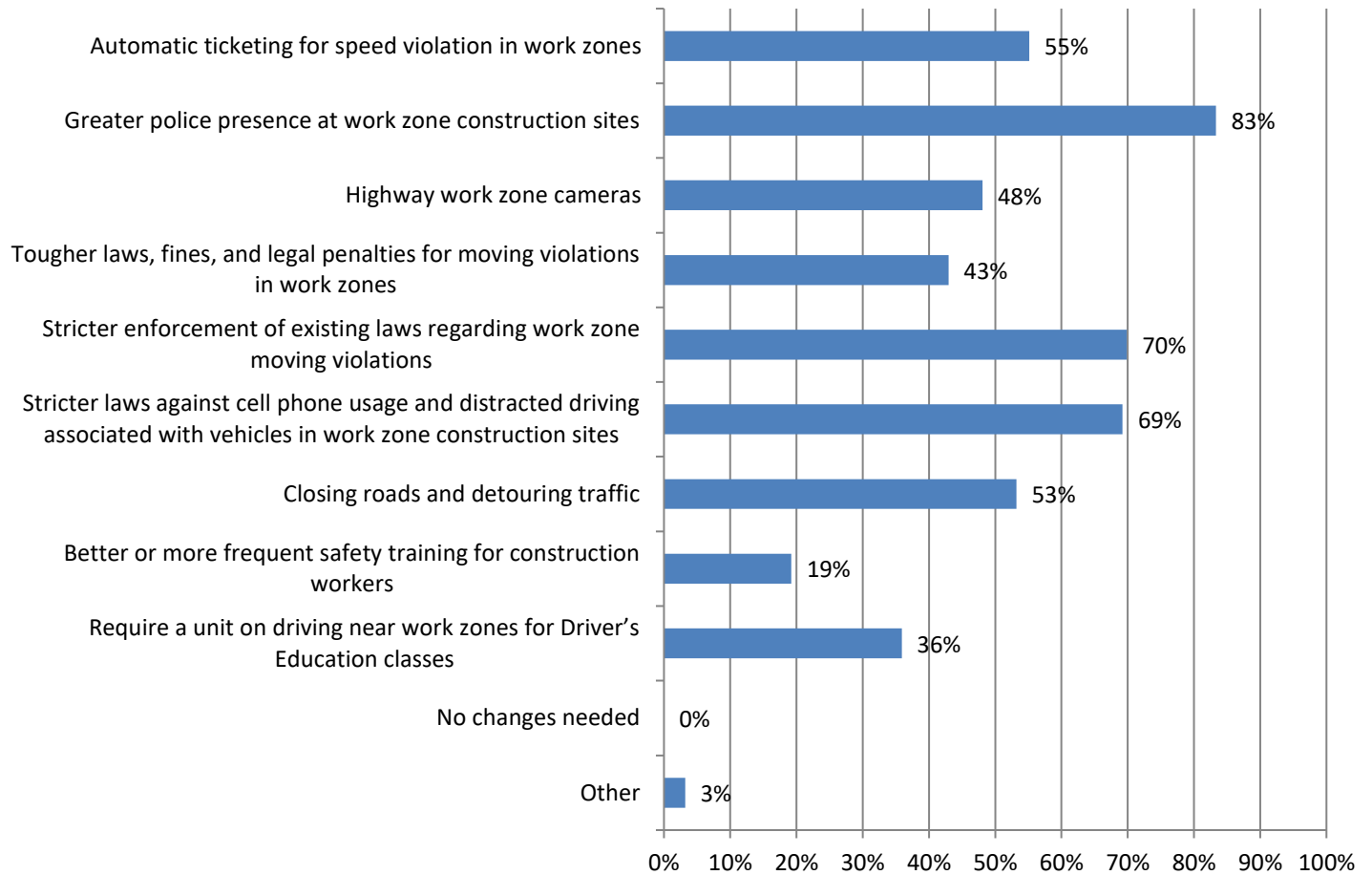
12. What is your firm's experience with using Truck-Mounted Attenuators (TMAs) as a safety measure in highway work zones? (158 Responses)



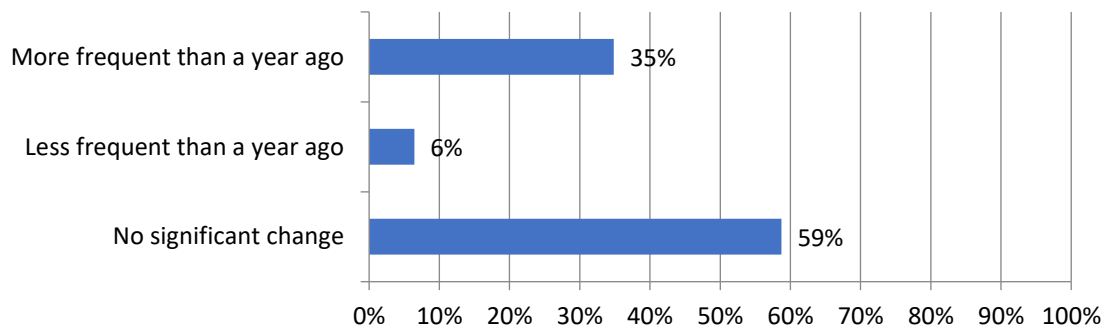
13. What is your firm's experience with using blue safety lights on construction equipment or vehicles to improve work zone visibility and safety? (155 Responses)



14. Would any of these measures help reduce the number of highway work zone crashes, injuries and/or fatalities? (162 Responses)



15. Has the frequency of work zone crashes when performing night work changed from a year ago? (159 Responses)



16. What do you attribute the greater frequency of nighttime work zone crashes to? (40 Responses)

