



AGC
THE CONSTRUCTION
ASSOCIATION

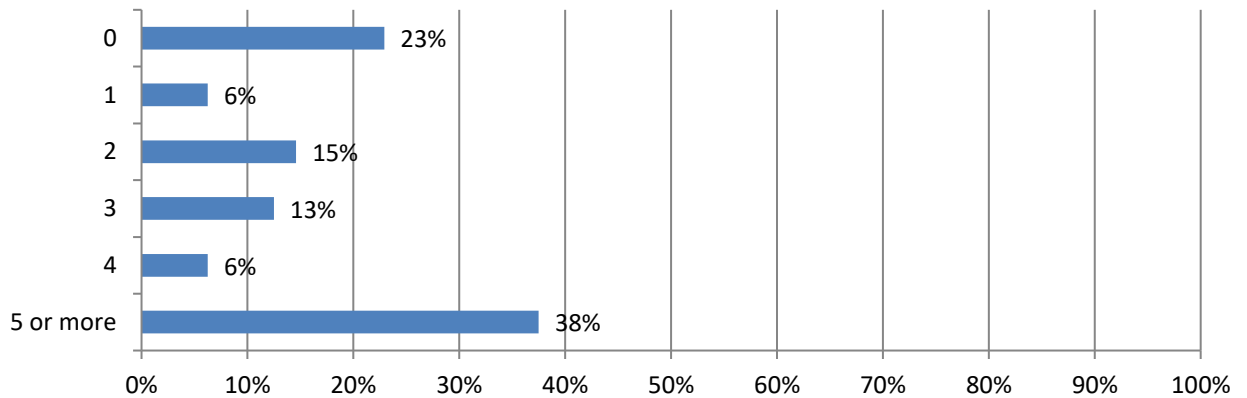


2026 Work Zone Awareness Survey Results

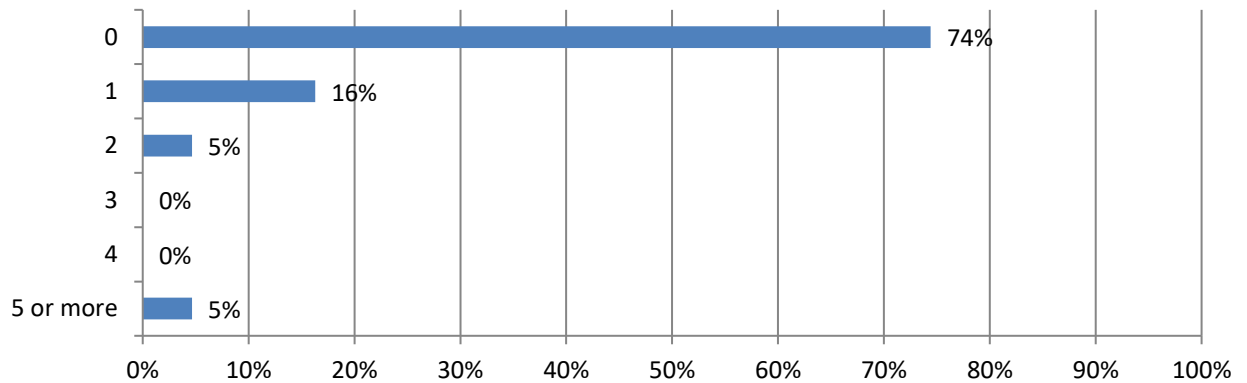
Northeast Results

Total 63 responses; Responses varied for some questions. Percentages are based on responses to each question and may not sum to 100 due to rounding (total specified in some questions).

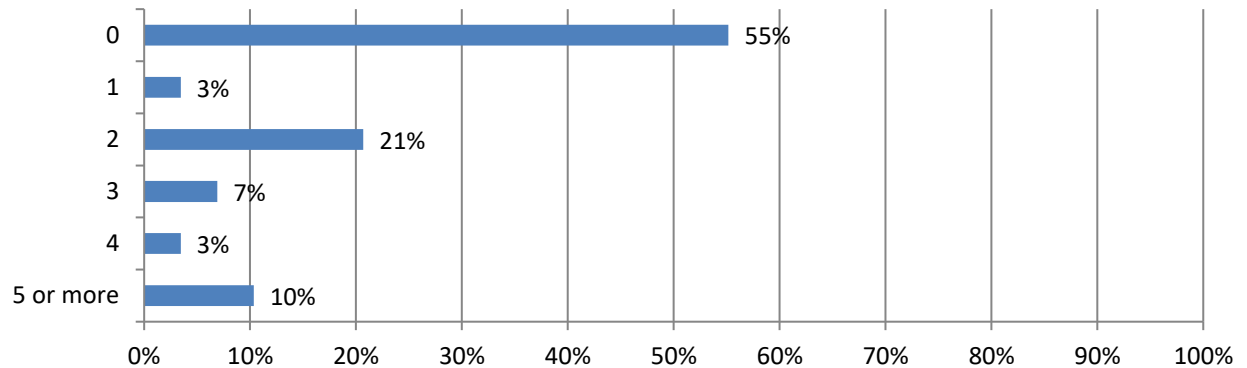
1. In the past 12 months, how many crashes involving a motor vehicle have occurred at a highway work zone where your firm operates? (57 Responses)



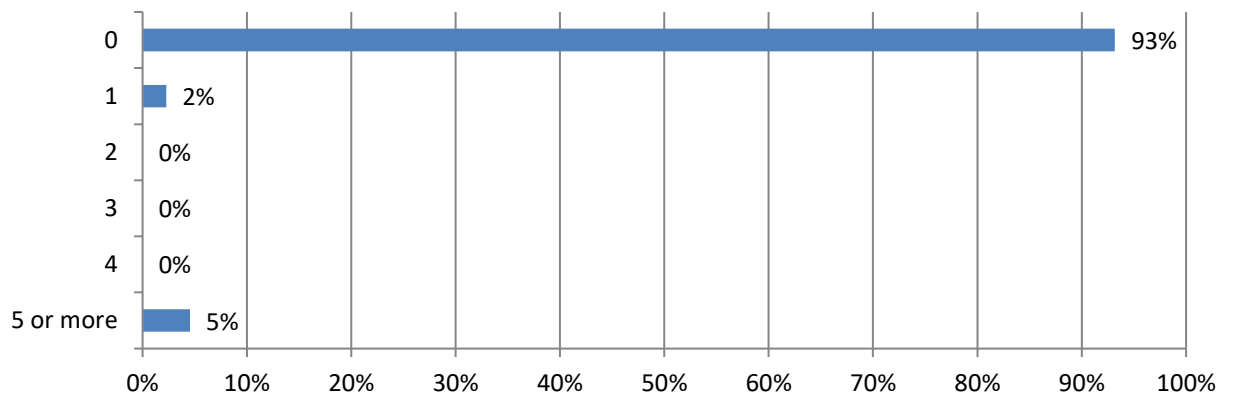
2. How many construction workers were injured in these crashes? (48 Responses)



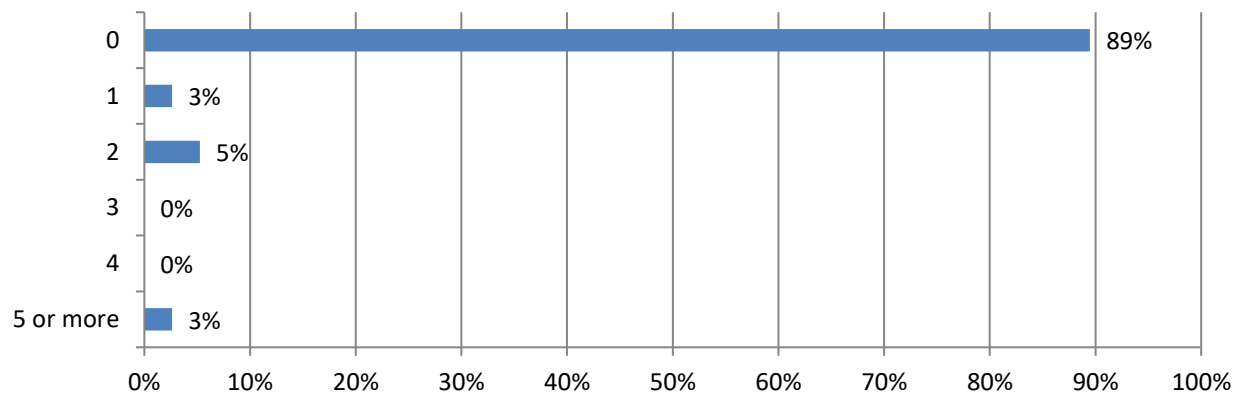
3. How many drivers or passengers were injured in these crashes? (47 Responses)



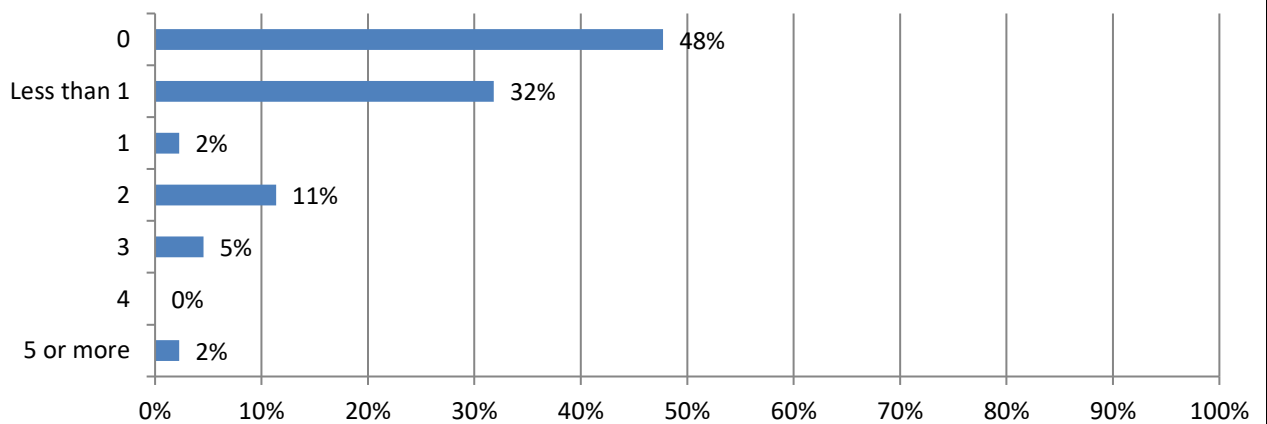
4. How many construction worker fatalities resulted from these crashes? (48 Responses)



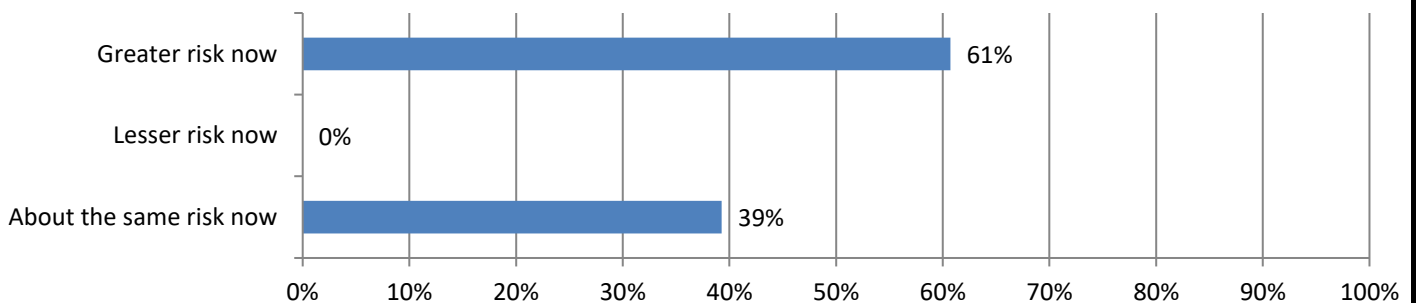
5. How many driver or passenger fatalities resulted from these crashes? (47 Responses)



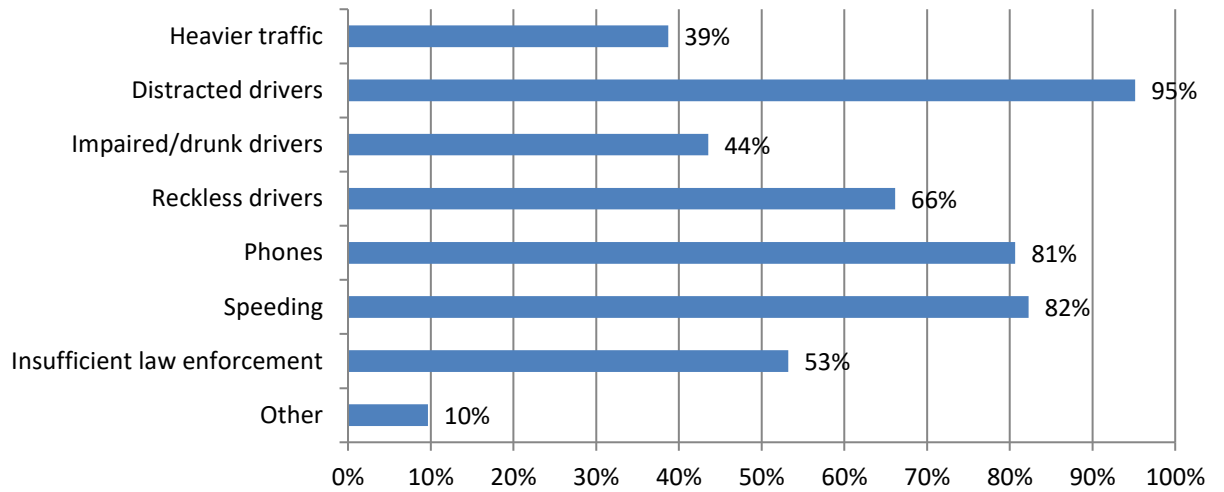
6. How many days have your firm's projects been delayed because of these crashes? (49 Responses)



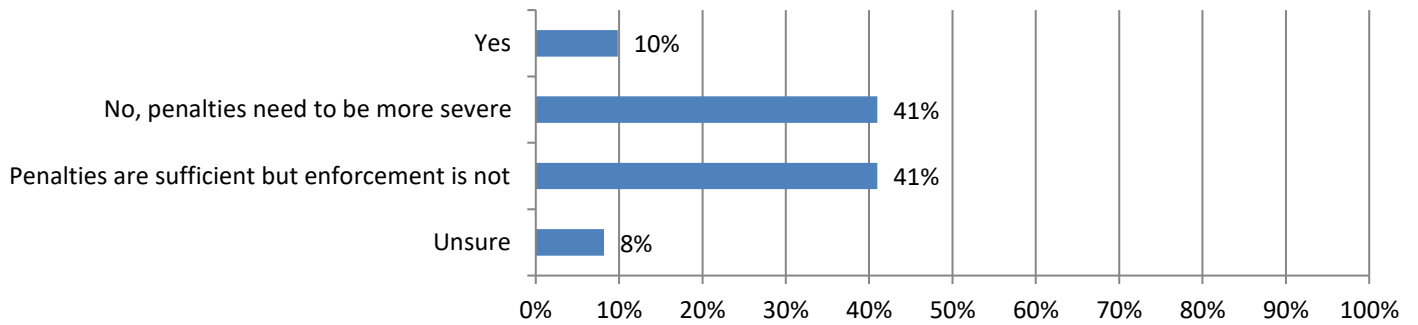
7. How much of a risk are highway work zone crashes now compared to one year ago? (59 Responses)



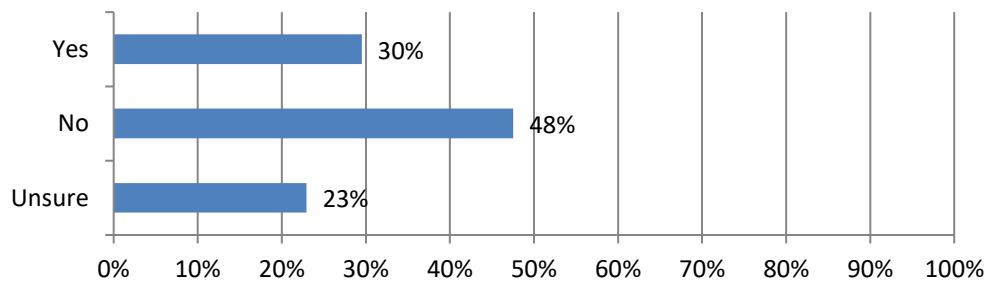
8. Which of the following do you think are the main reasons that contribute to highway work zone crashes and/or intrusions? (62 Responses)



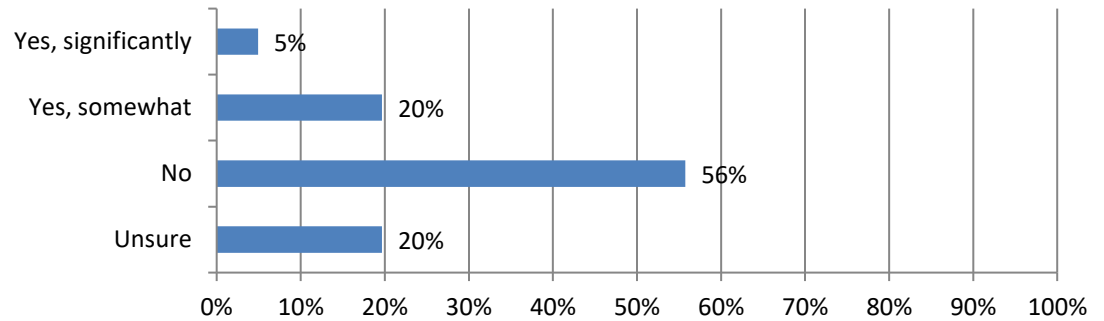
9. Are the current penalties for moving violations in highway work zones sufficient to deter unsafe driving behaviors in the states where you work? (61 Responses)



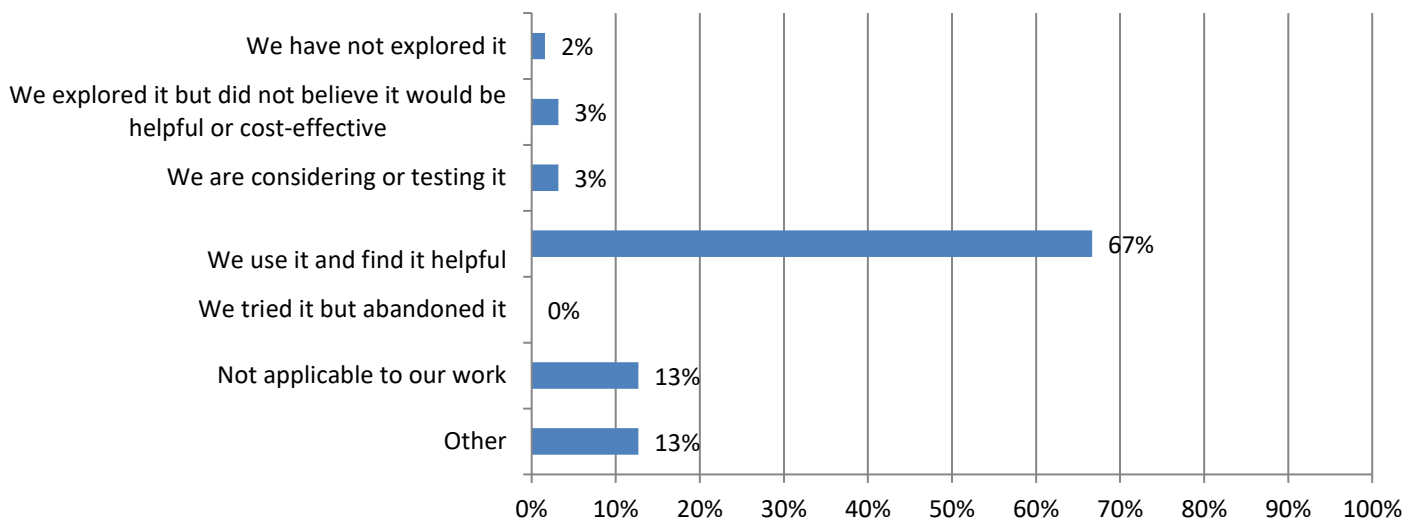
10. Are enforcement efforts currently helping deter unsafe driving behaviors in highway work zones in the states where you work? (61 Responses)



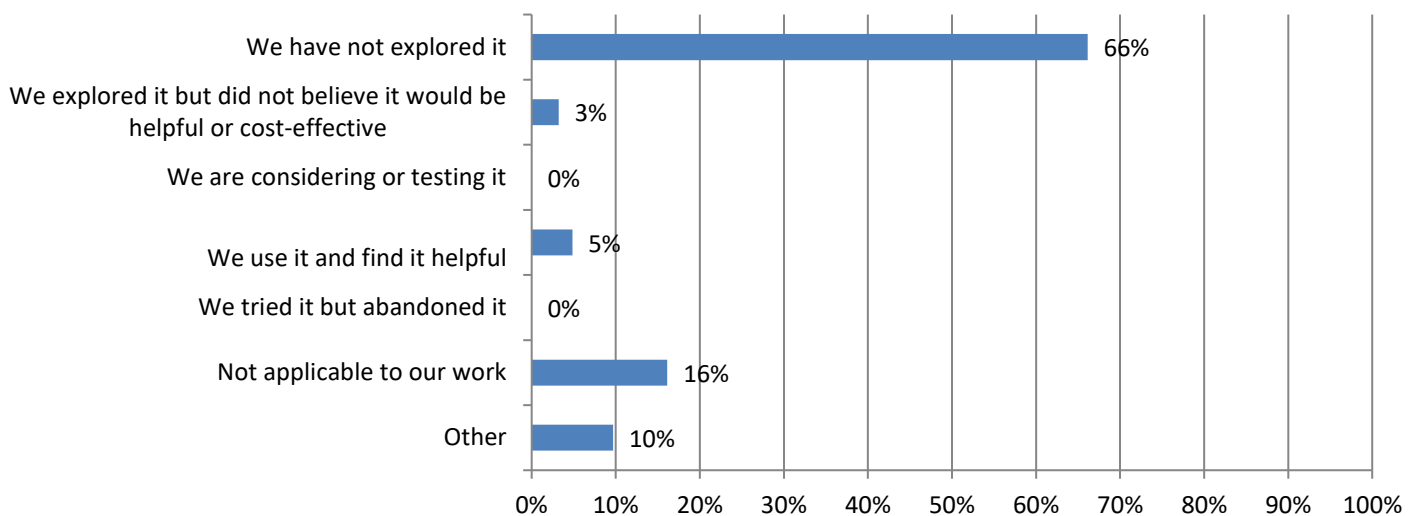
11. Have increases in material prices affected your firm's ability to purchase equipment or materials used for highway work zone safety (e.g., barriers, signage, protective devices)? (61 Responses)



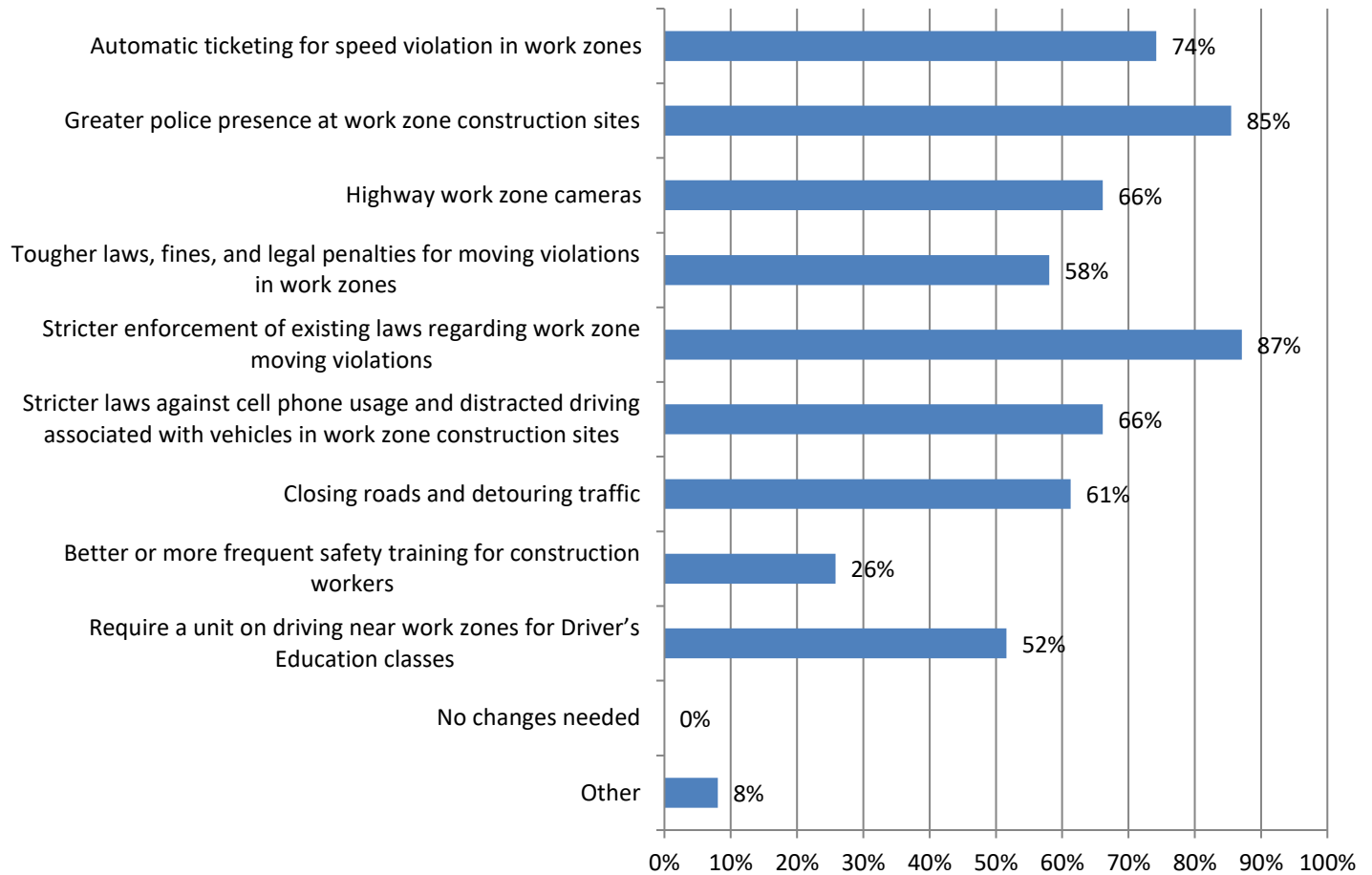
12. What is your firm's experience with using Truck-Mounted Attenuators (TMAs) as a safety measure in highway work zones? (63 Responses)



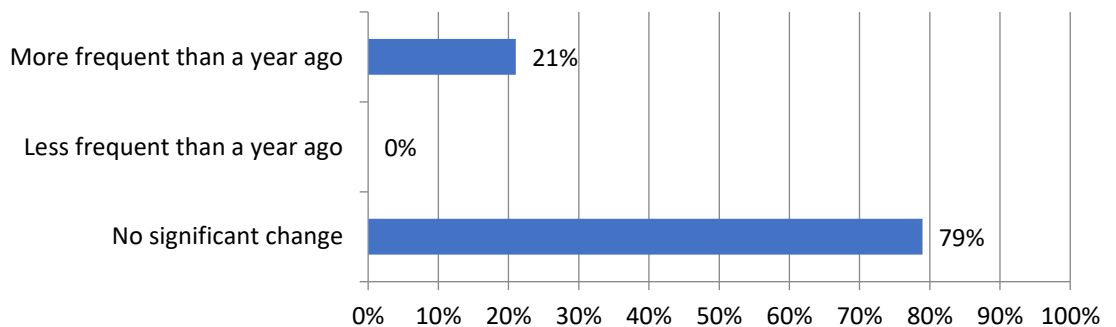
13. What is your firm's experience with using blue safety lights on construction equipment or vehicles to improve work zone visibility and safety? (62 Responses)



14. Would any of these measures help reduce the number of highway work zone crashes, injuries and/or fatalities? (63 Responses)



15. Has the frequency of work zone crashes when performing night work changed from a year ago? (60 Responses)



16. What do you attribute the greater frequency of nighttime work zone crashes to? (11 Responses)

