



**AGC**  
THE CONSTRUCTION  
ASSOCIATION

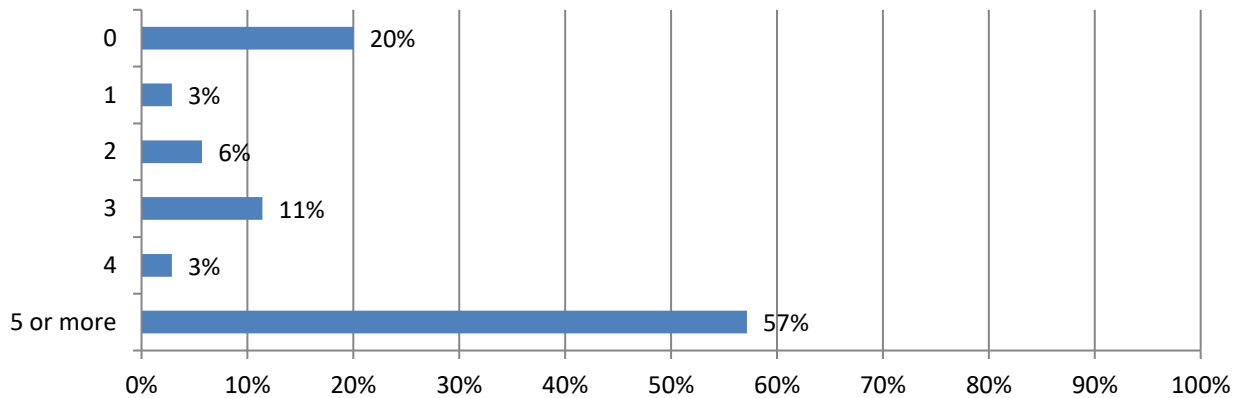


## 2026 Work Zone Awareness Survey Results

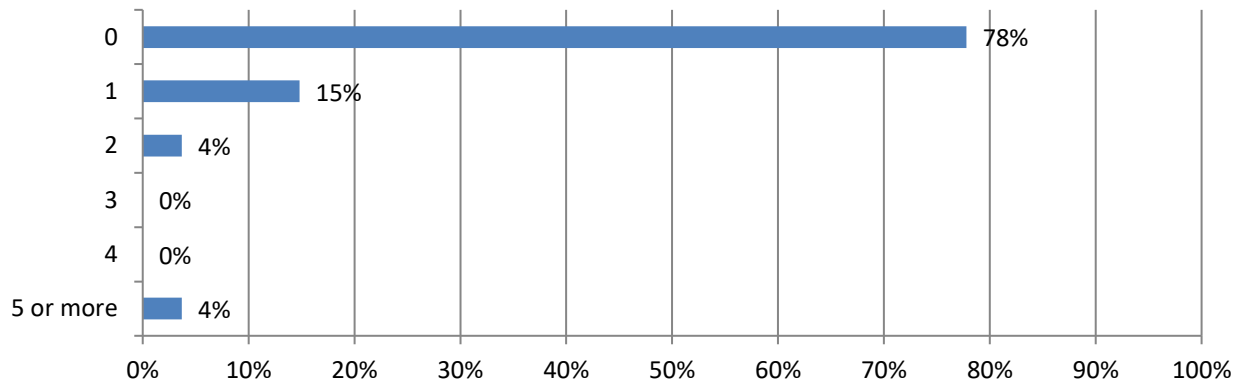
### Missouri Results

Total 43 responses; Responses varied for some questions. Percentages are based on responses to each question and may not sum to 100 due to rounding (total specified in some questions).

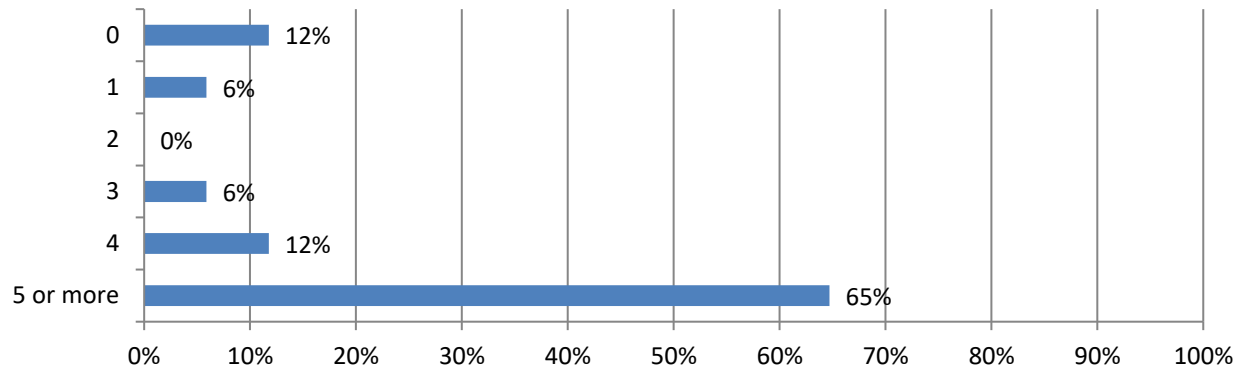
**1. In the past 12 months, how many crashes involving a motor vehicle have occurred at a highway work zone where your firm operates? (39 Responses)**



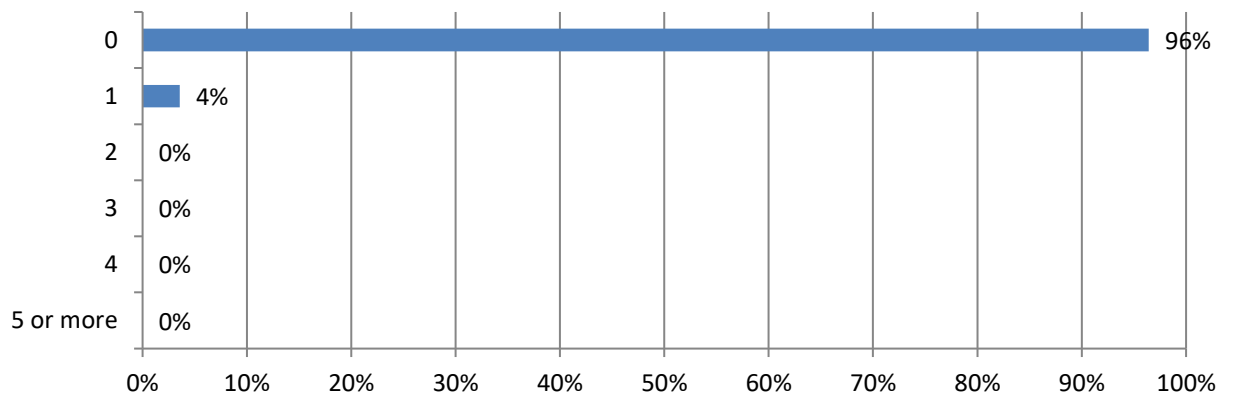
**2. How many construction workers were injured in these crashes? (35 Responses)**



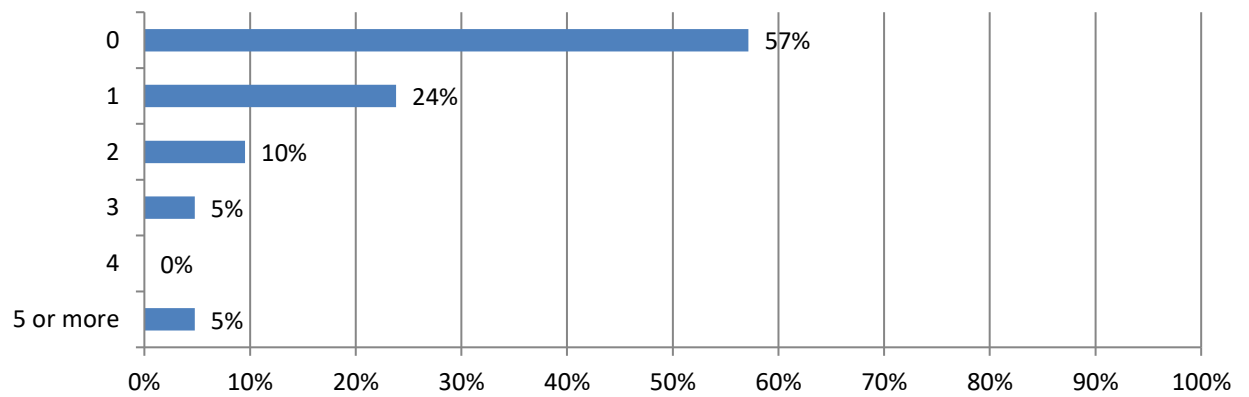
**3. How many drivers or passengers were injured in these crashes? (36 Responses)**



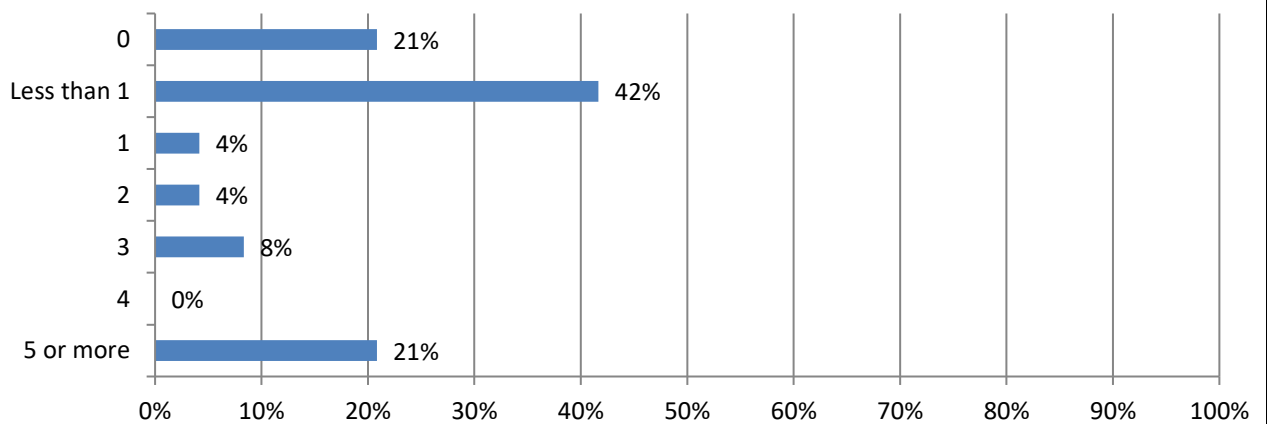
**4. How many construction worker fatalities resulted from these crashes? (36 Responses)**



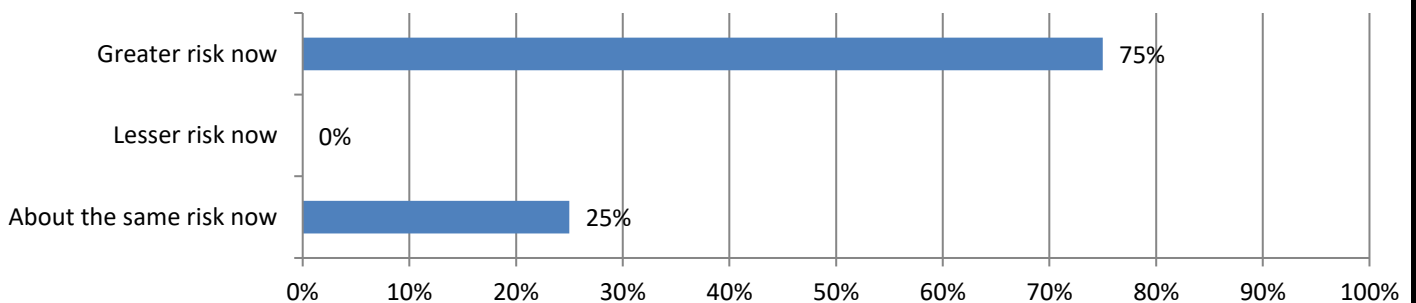
**5. How many driver or passenger fatalities resulted from these crashes? (35 Responses)**



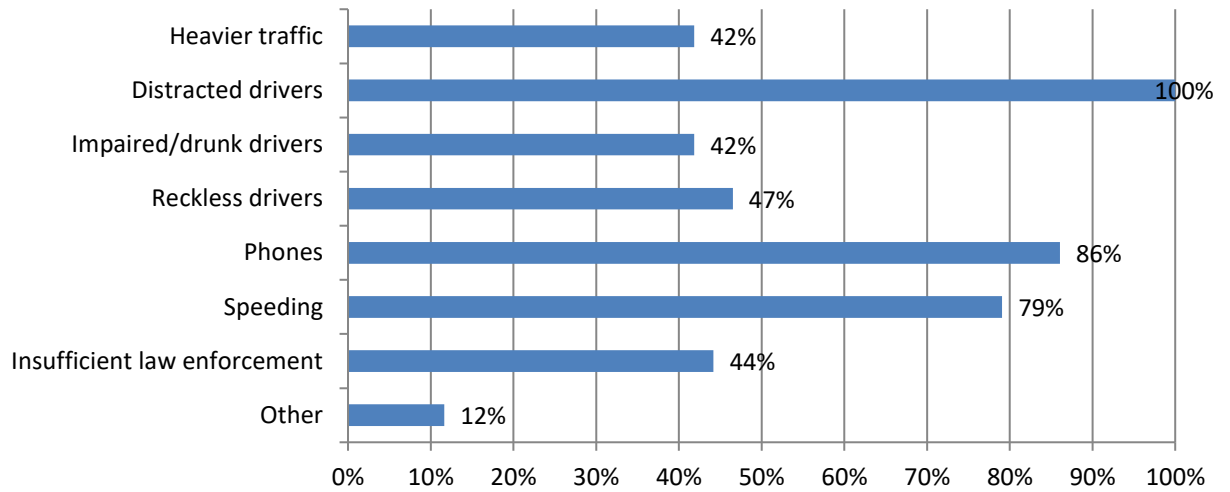
**6. How many days have your firm's projects been delayed because of these crashes? (36 Responses)**



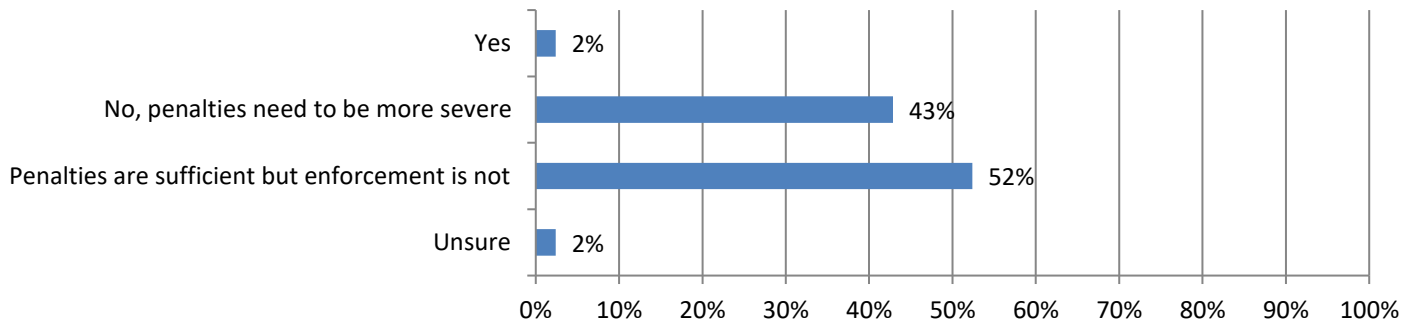
**7. How much of a risk are highway work zone crashes now compared to one year ago? (42 Responses)**



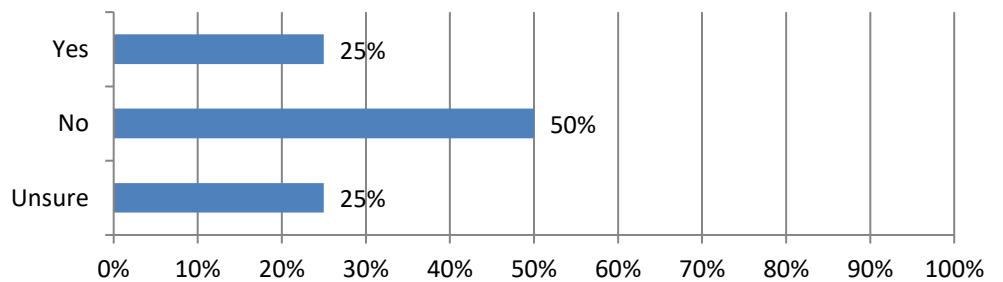
**8. Which of the following do you think are the main reasons that contribute to highway work zone crashes and/or intrusions? (43 Responses)**



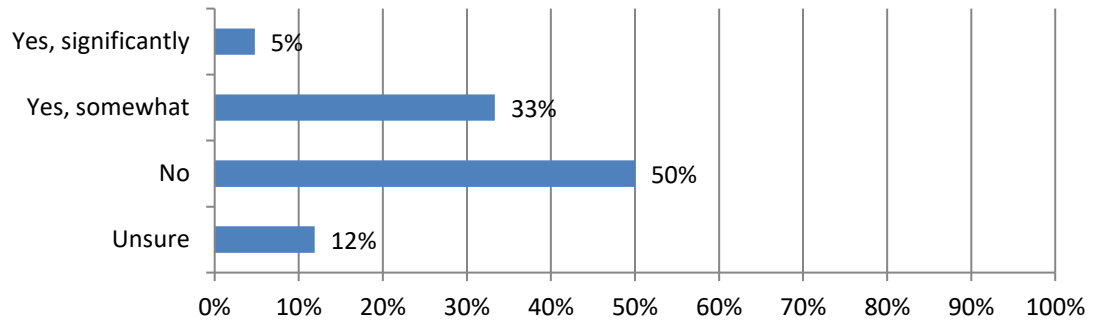
**9. Are the current penalties for moving violations in highway work zones sufficient to deter unsafe driving behaviors in the states where you work? (42 Responses)**



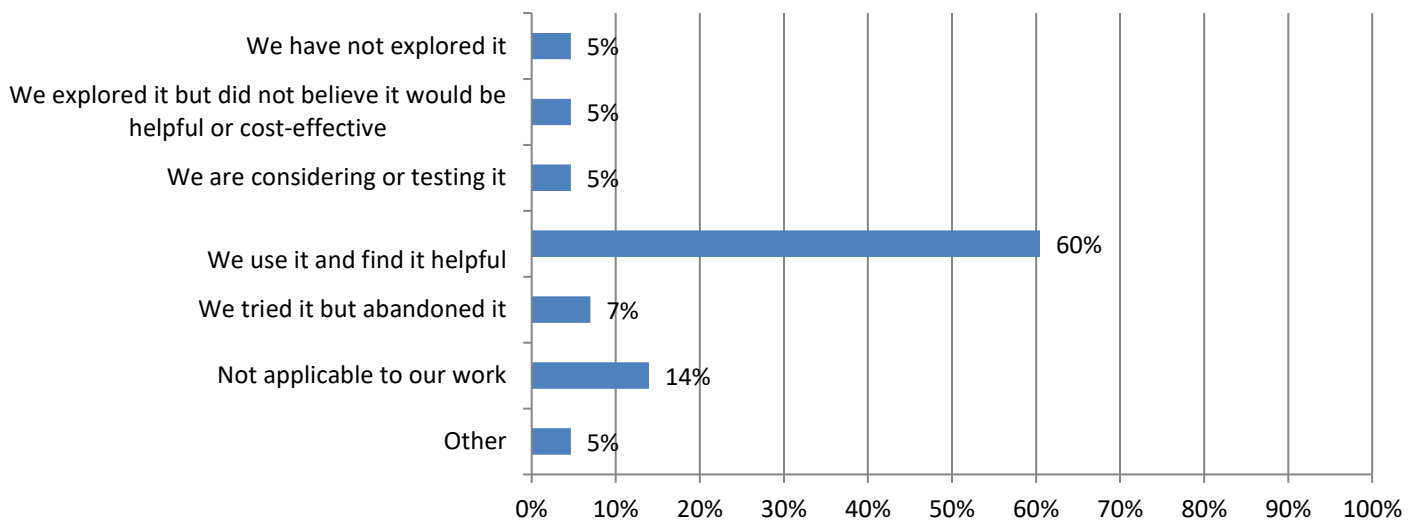
**10. Are enforcement efforts currently helping deter unsafe driving behaviors in highway work zones in the states where you work? (40 Responses)**



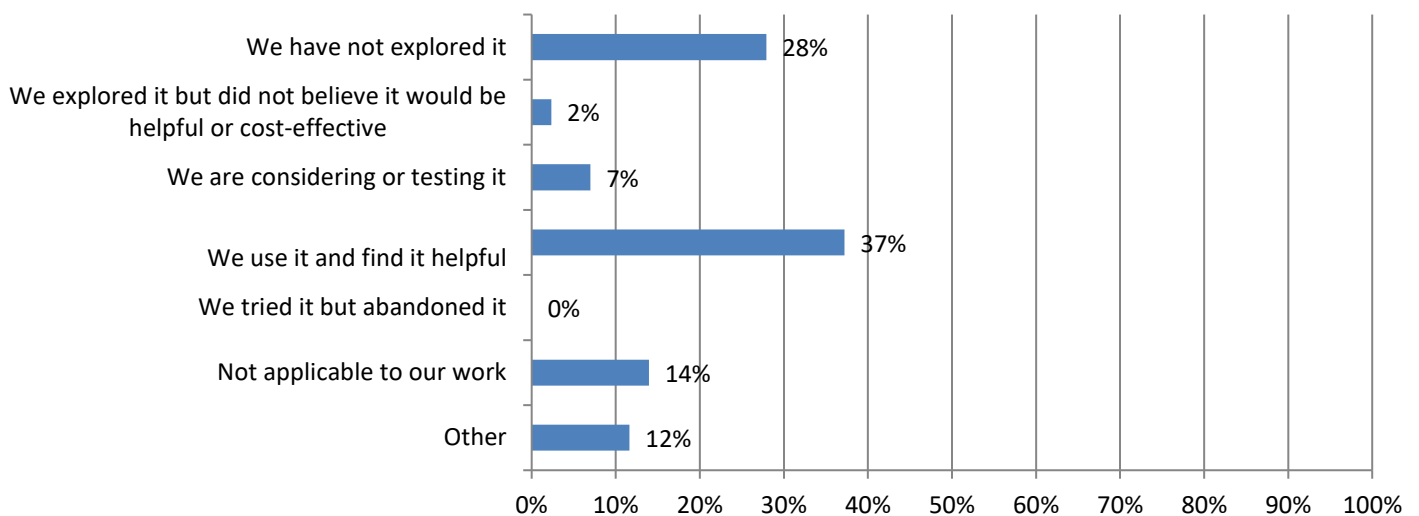
**11. Have increases in material prices affected your firm's ability to purchase equipment or materials used for highway work zone safety (e.g., barriers, signage, protective devices)? (42 Responses)**



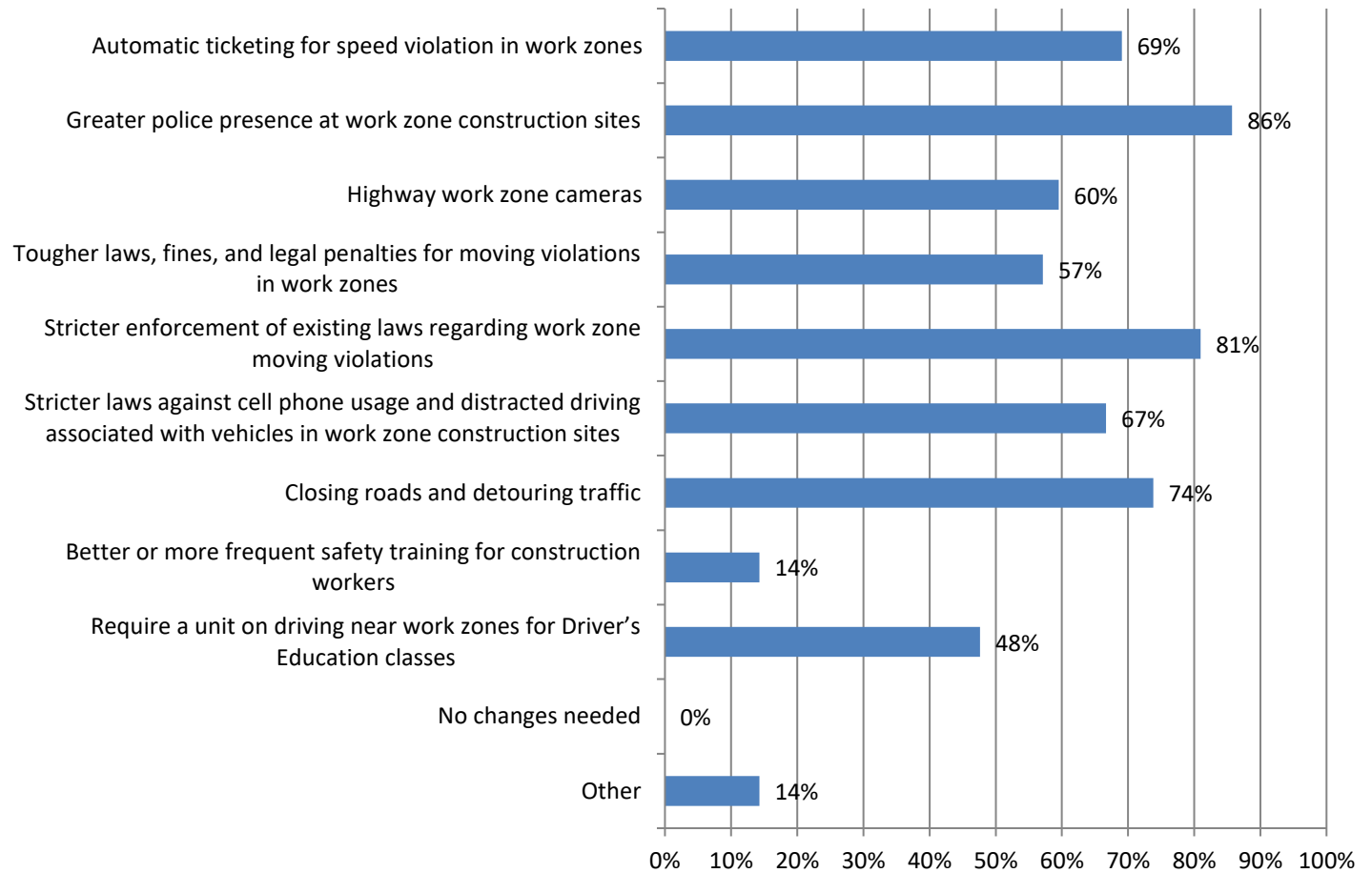
**12. What is your firm's experience with using Truck-Mounted Attenuators (TMAs) as a safety measure in highway work zones? (43 Responses)**



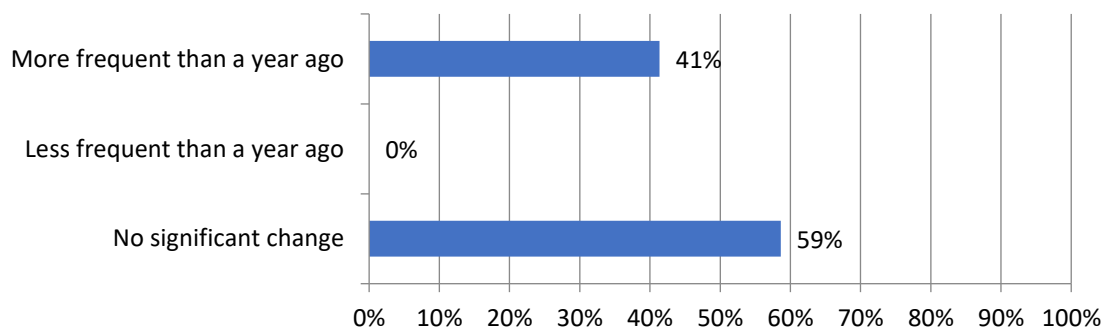
**13. What is your firm's experience with using blue safety lights on construction equipment or vehicles to improve work zone visibility and safety? (43 Responses)**



**14. Would any of these measures help reduce the number of highway work zone crashes, injuries and/or fatalities? (43 Responses)**



**15. Has the frequency of work zone crashes when performing night work changed from a year ago? (42 Responses)**



**16. What do you attribute the greater frequency of nighttime work zone crashes to? (13 Responses)**

