

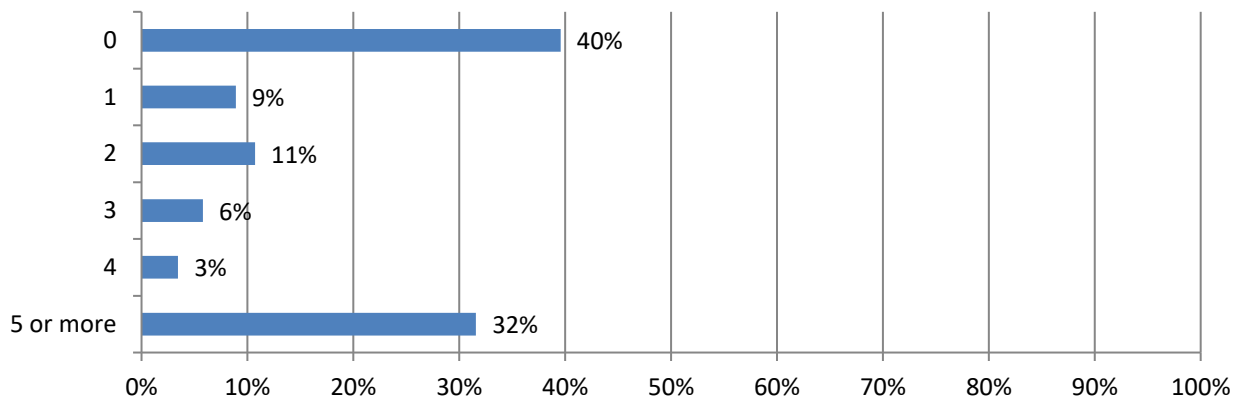


2025 Work Zone Awareness Survey Results

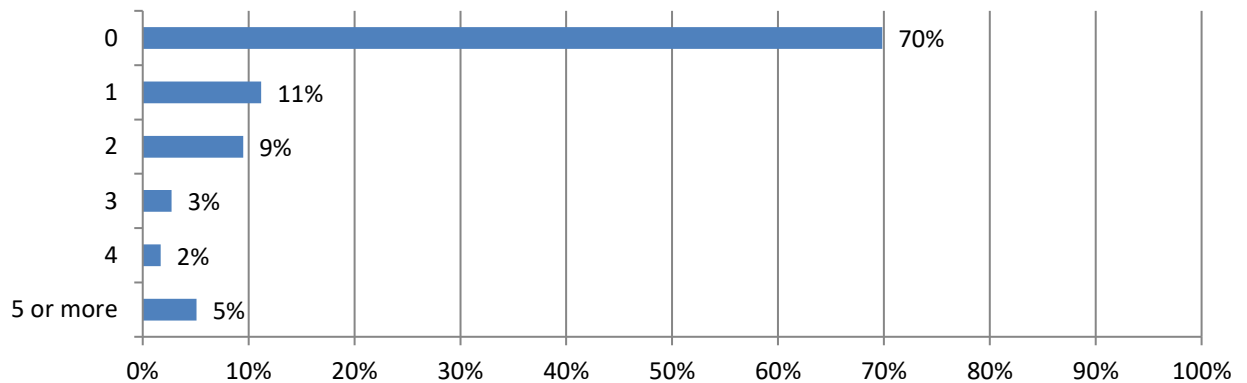
National Results

Total 675 responses; Responses varied for some questions. Percentages are based on responses to each question and may not sum to 100 due to rounding (total specified in some questions).

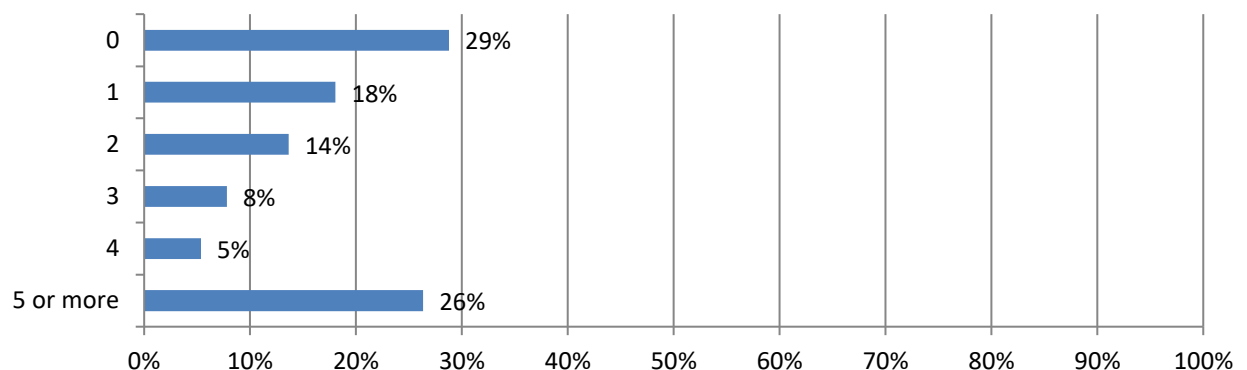
1. In the past 12 months, how many crashes involving a motor vehicle have occurred at a highway work zone where your firm operates? (551 Responses)



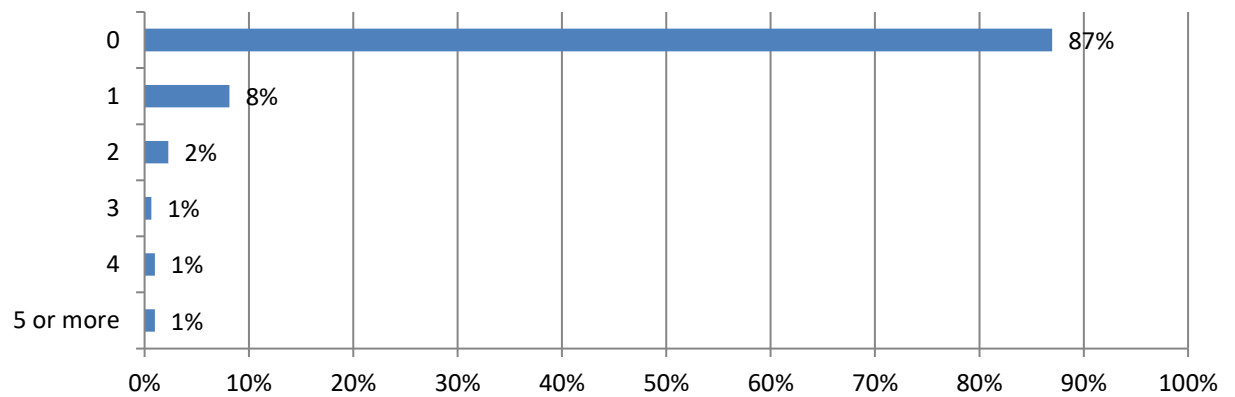
2. How many construction workers were injured in these crashes? (295 Responses)



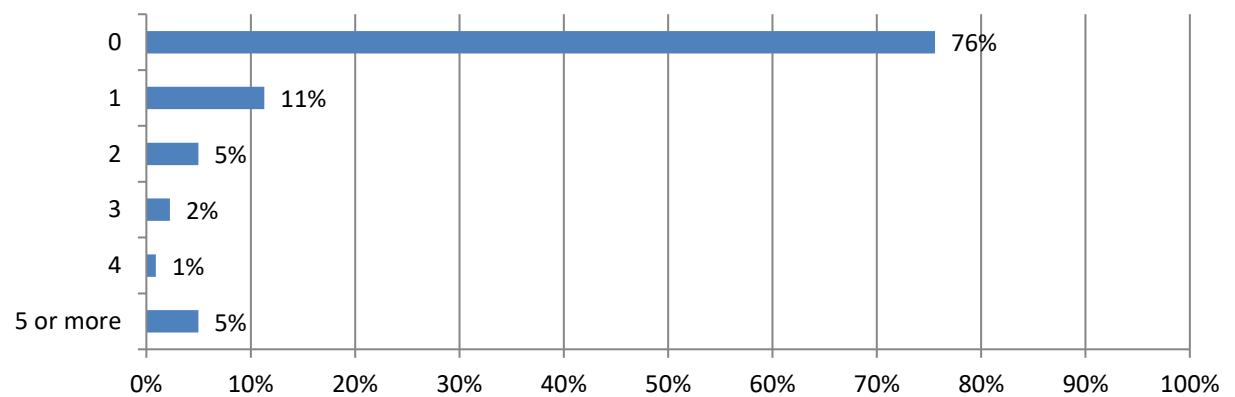
3. How many drivers or passengers were injured in these crashes? (205 Responses)



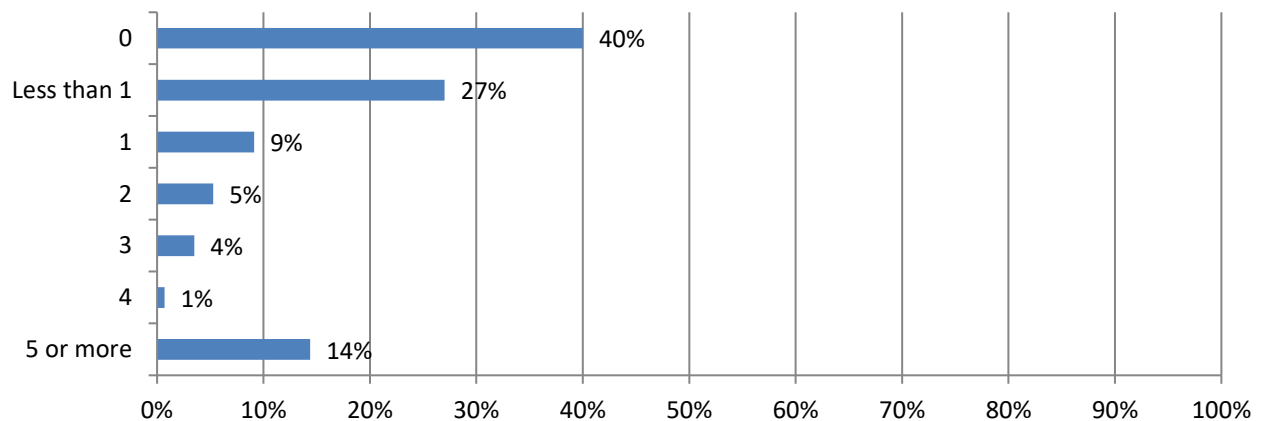
4. How many construction worker fatalities resulted from these crashes? (307 Responses)



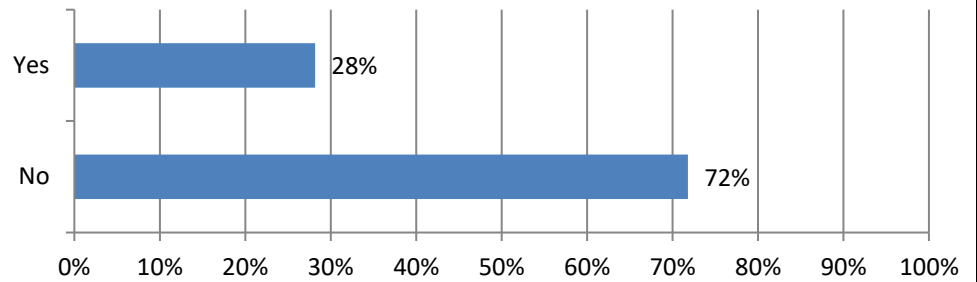
5. How many driver or passenger fatalities resulted from these crashes? (221 Responses)



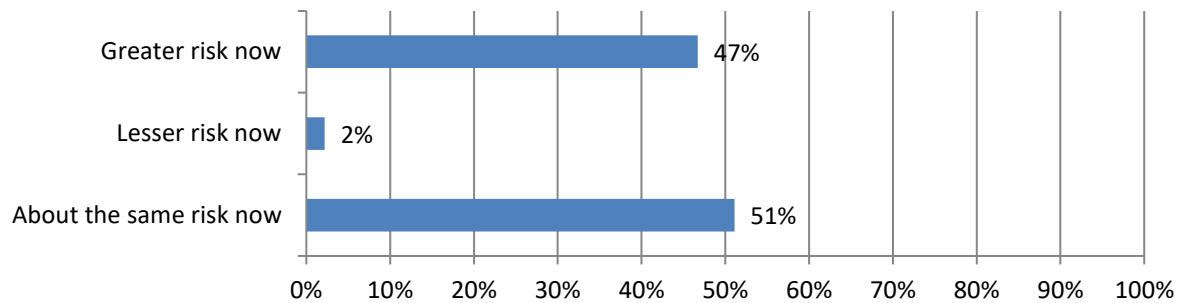
6. How many days have your firm's projects been delayed because of these crashes? (285 Responses)



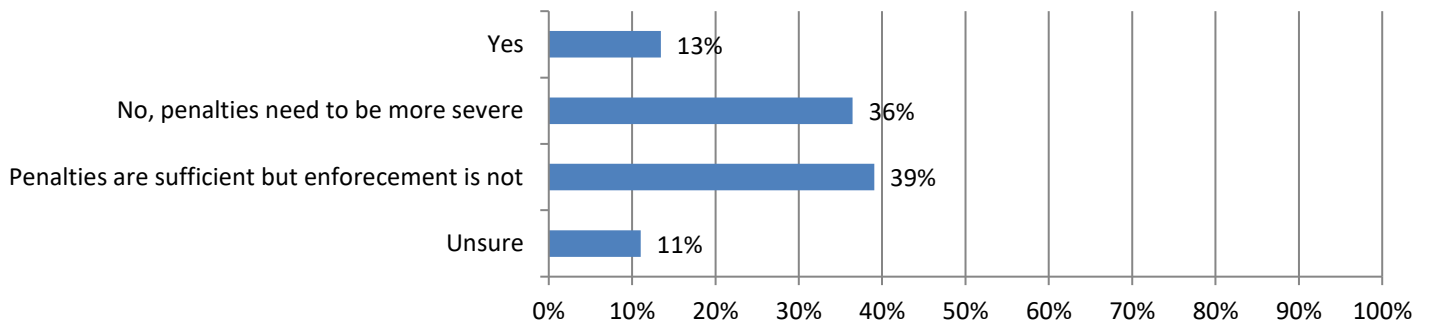
7. Have work zone crashes affected your ability to hire and attract new workers into the industry? (227 Responses)



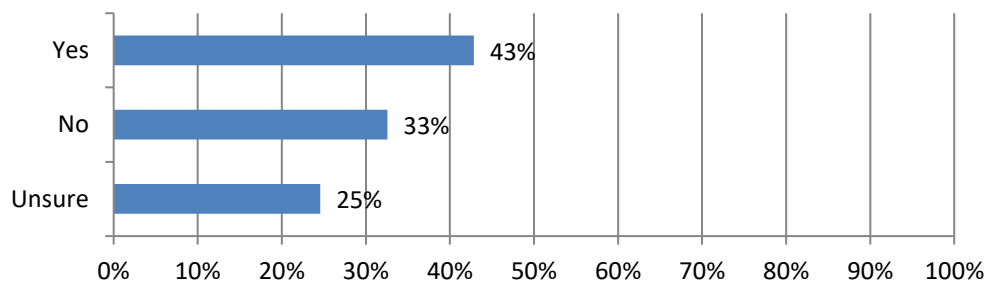
8. How much of a risk are highway work zone crashes now compared to one year ago? (503 Responses)



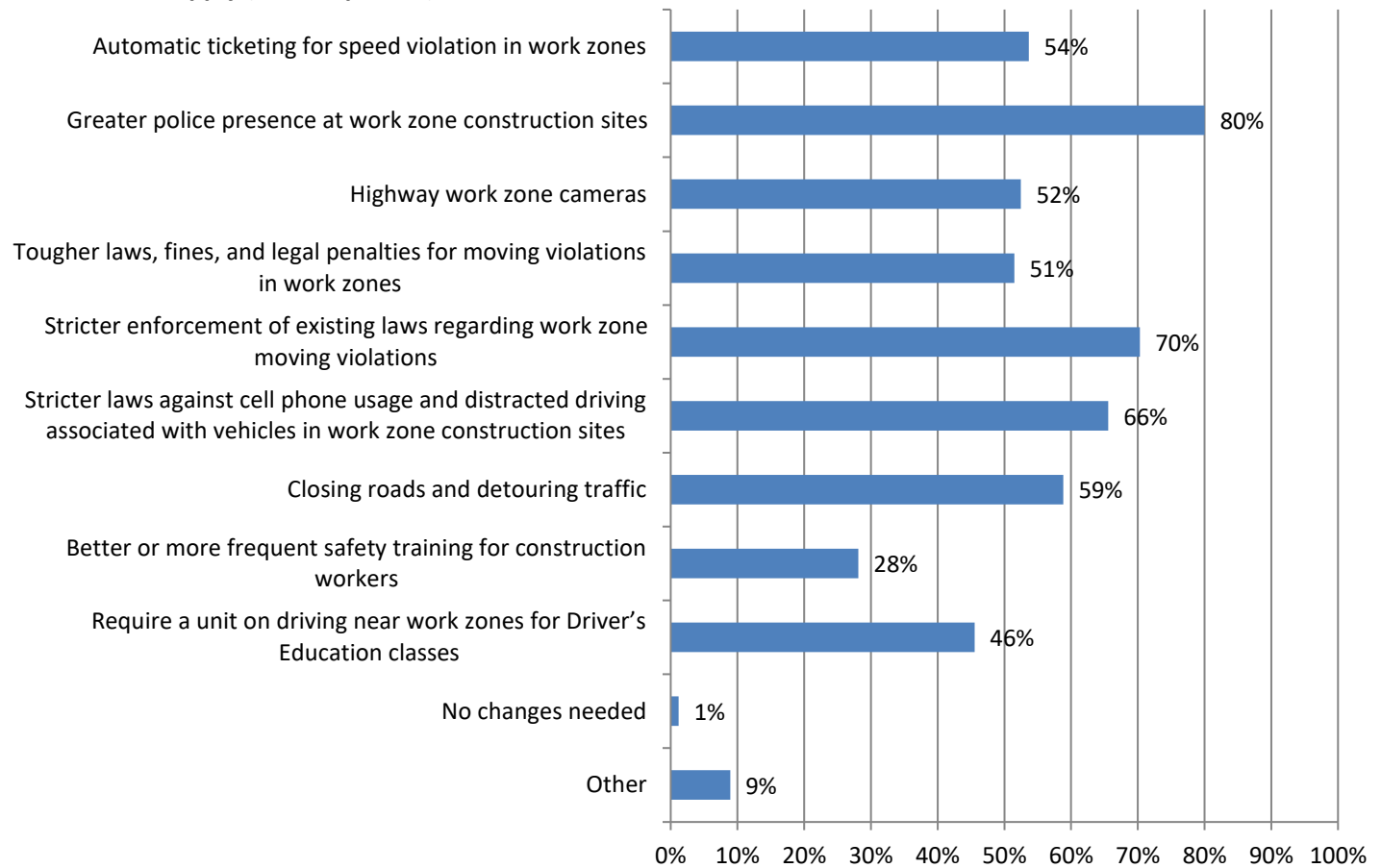
9. Are the current penalties for moving violations in highway work zones sufficient to deter unsafe driving behaviors in the states where you work? (543 Responses)



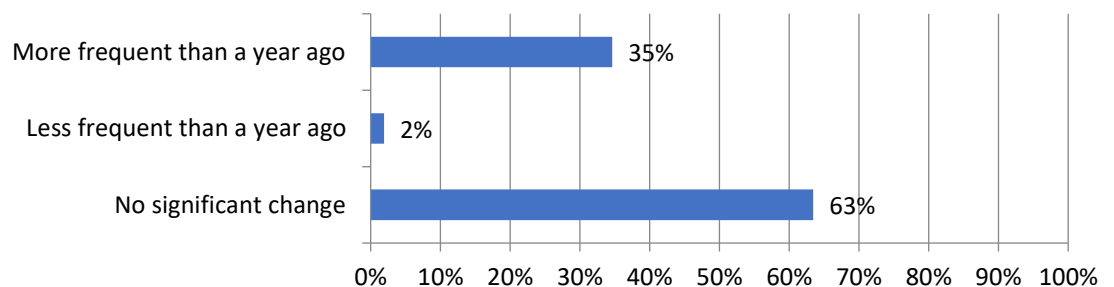
10. Are enforcement efforts – including police presence and/or the use of speeding cameras – currently helping deter unsafe driving behaviors in highway work zones in the states where you work? (525 Responses)



**11. Would any of these measures help reduce the number of highway work zone crashes, injuries and/or fatalities?
Check all that apply (505 Responses)**



**12. Has the frequency of work zone crashes when performing night work changed from a year ago?
(312 Responses)**



13. If you answered yes, what do you attribute this to? (108 Responses)

