

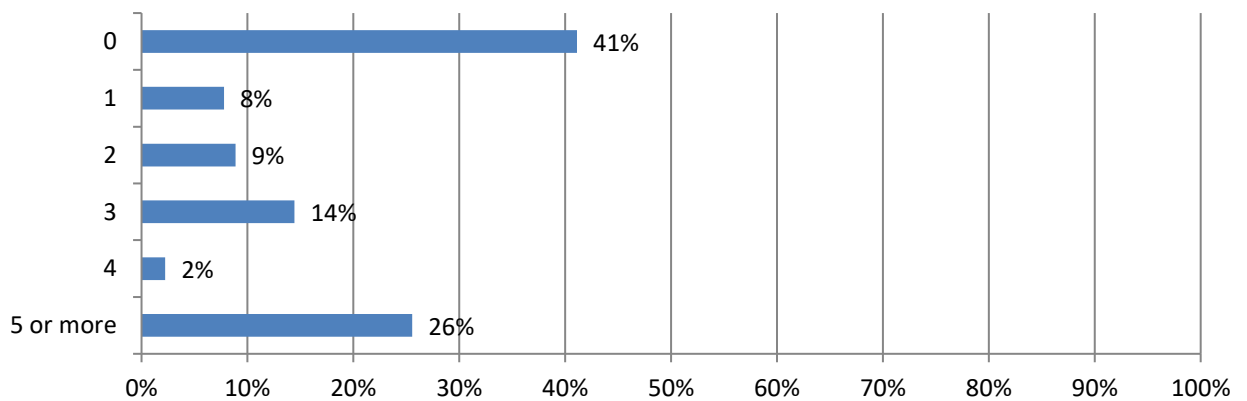


## 2024 Work Zone Awareness Survey Results

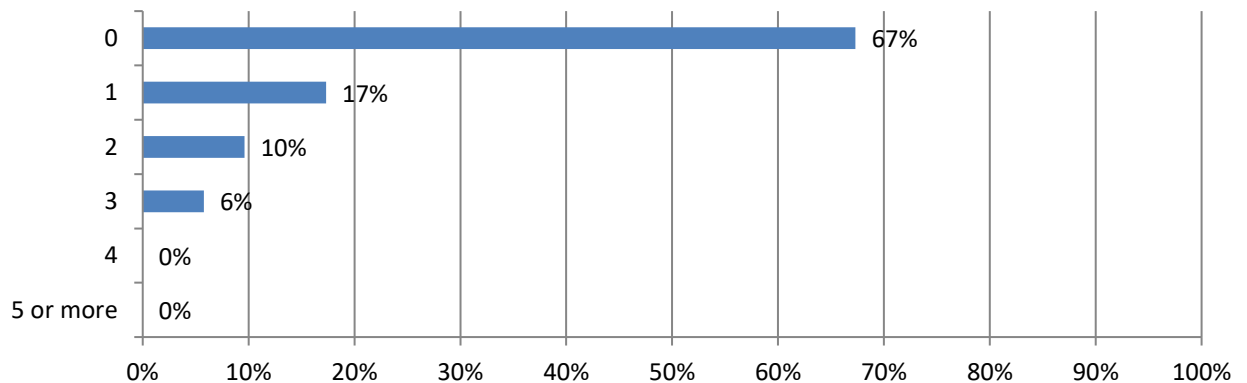
### West Results

Total 98 responses; Responses varied for some questions. Percentages are based on responses to each question and may not sum to 100 due to rounding (total specified in some questions).

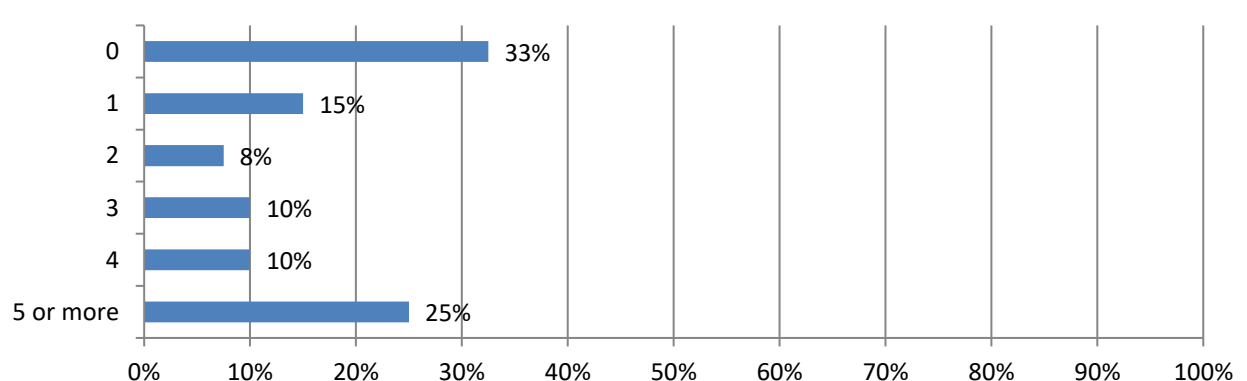
#### 1. In the past 12 months, how many crashes involving a motor vehicle have occurred at a highway work zone where your firm operates? (90 Responses)



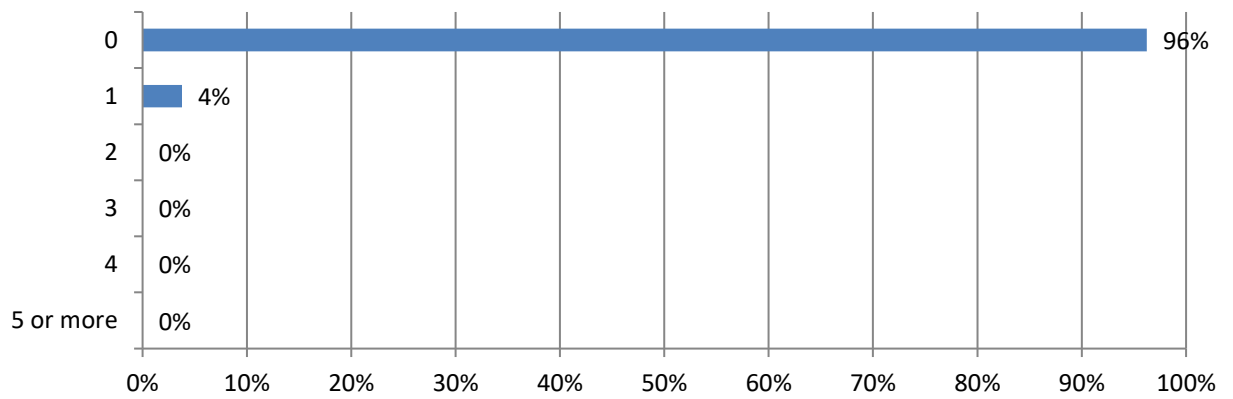
#### 2. How many construction workers were injured in these crashes? (52 Responses)



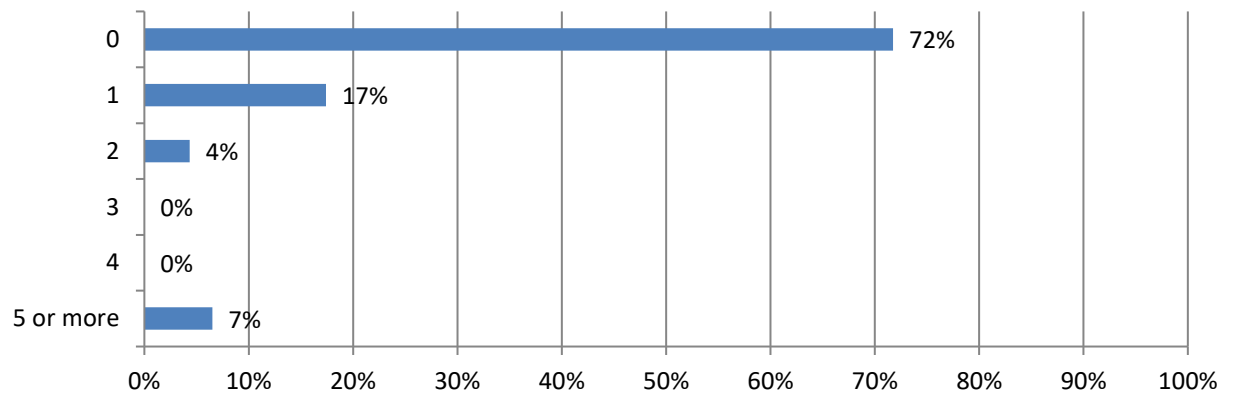
#### 3. How many drivers or passengers were injured in these crashes? (40 Responses)



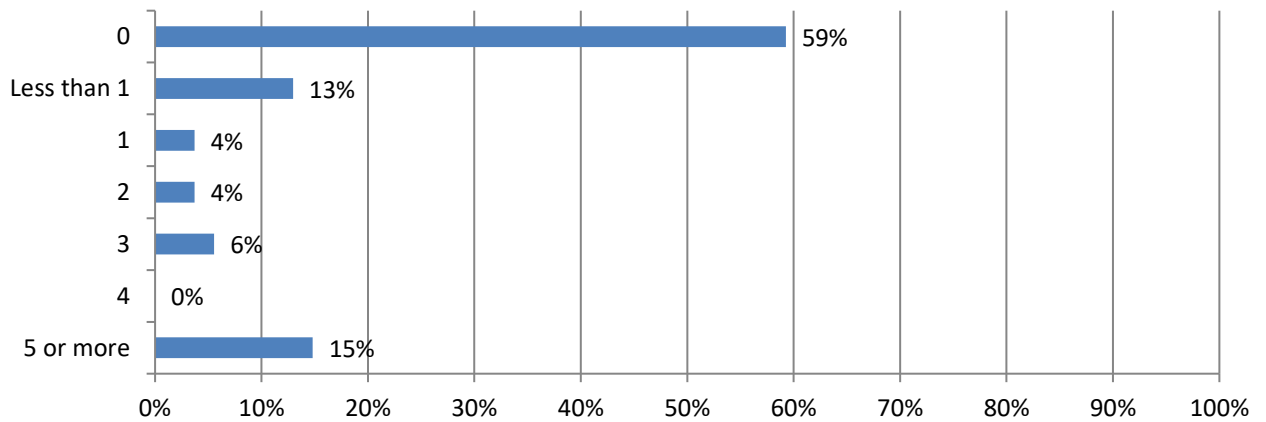
**4. How many construction worker fatalities resulted from these crashes? (53 Responses)**



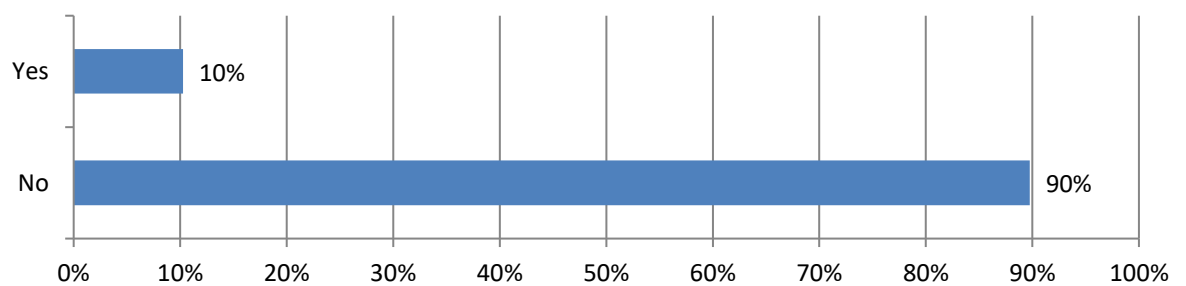
**5. How many driver or passenger fatalities resulted from these crashes? (46 Responses)**



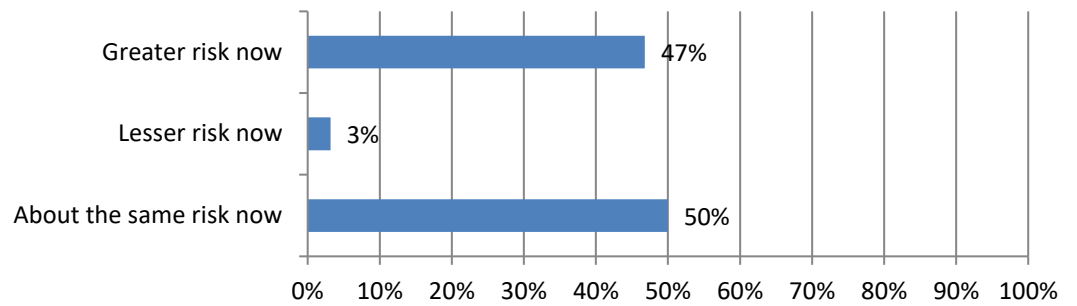
**6. How many days have your firm's projects been delayed because of these crashes? (54 Responses)**



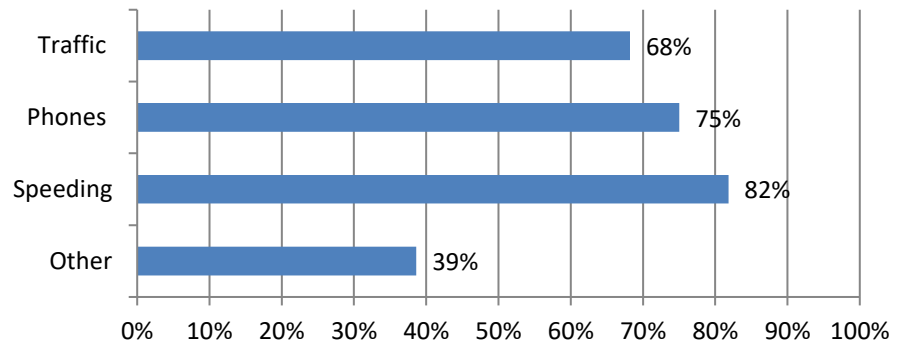
**7. Have work zone crashes affected your ability to hire and attract new workers into the industry? (39 Responses)**



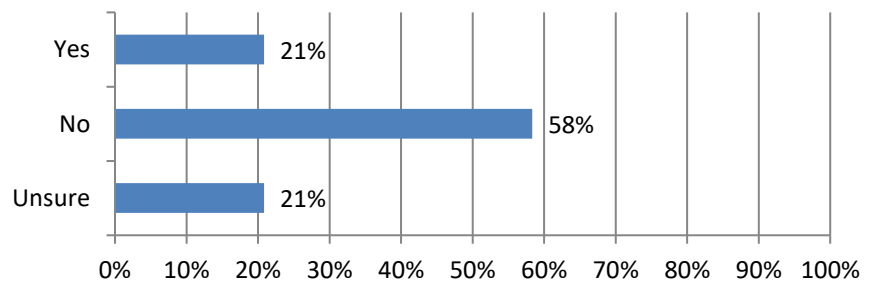
**8. How much of a risk are highway work zone crashes now compared to one year ago? (94 Responses)**



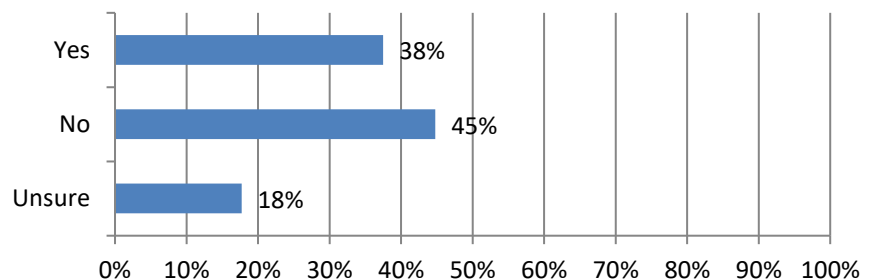
**9. Why do you think highway work zone construction is more dangerous today compared to one year ago? (44 Responses)**



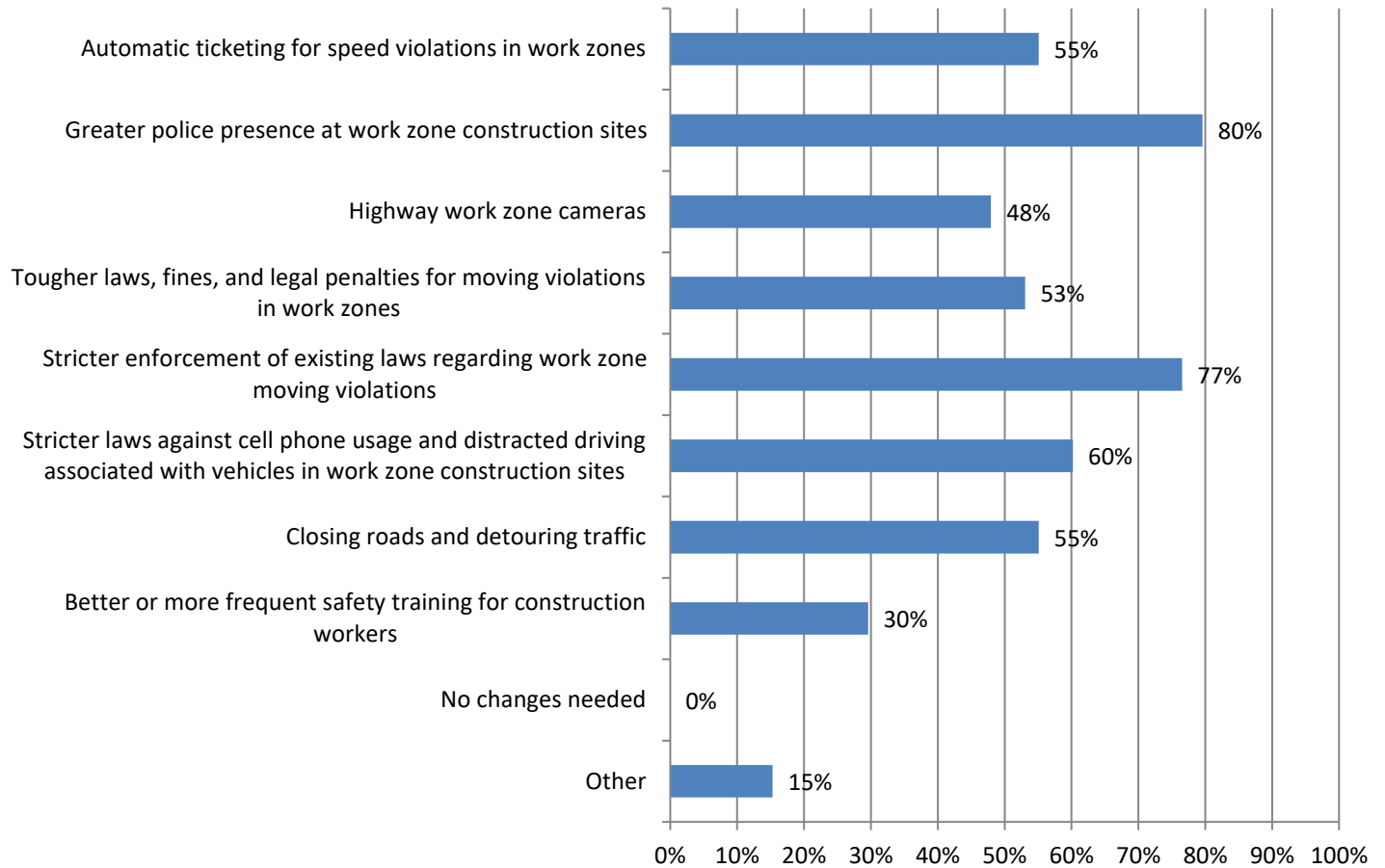
**10. Are the current penalties for moving violations in highway work zones sufficient to deter unsafe driving behaviors in the states where you work? (96 Responses)**



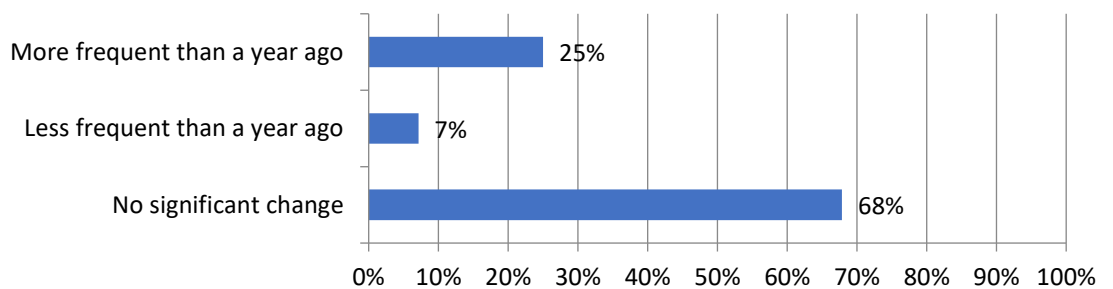
**11. Are enforcement efforts – including police presence and/or the use of speeding cameras – currently helping deter unsafe driving behaviors in highway work zones in the states where you work? (96 Responses)**



**12. Would any of these measures help reduce the number of highway work zone crashes, injuries and/or fatalities? (98 Responses)**



**13. Has the frequency of work zone crashes when performing night work changed from a year ago? (56 Responses)**



**14. If you answered yes, what do you attribute this to? (14 Responses)**

