

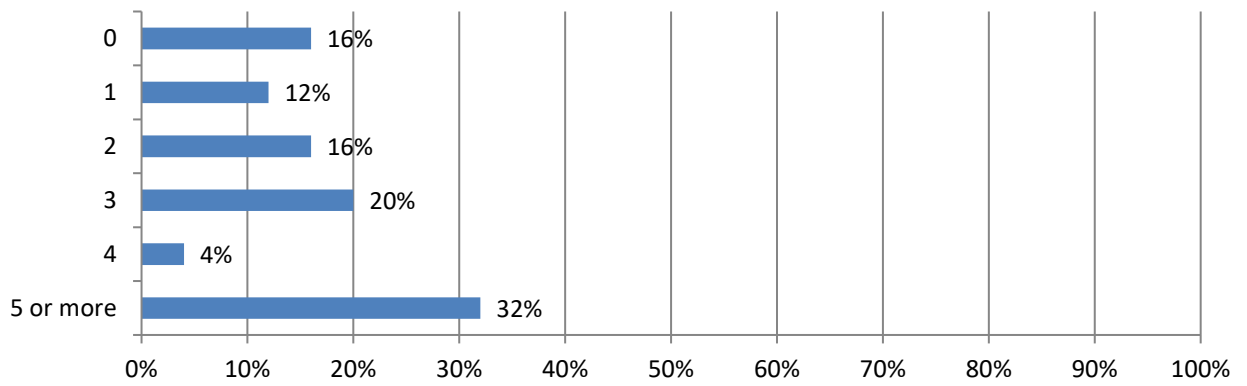


## 2023 Work Zone Awareness Survey Results

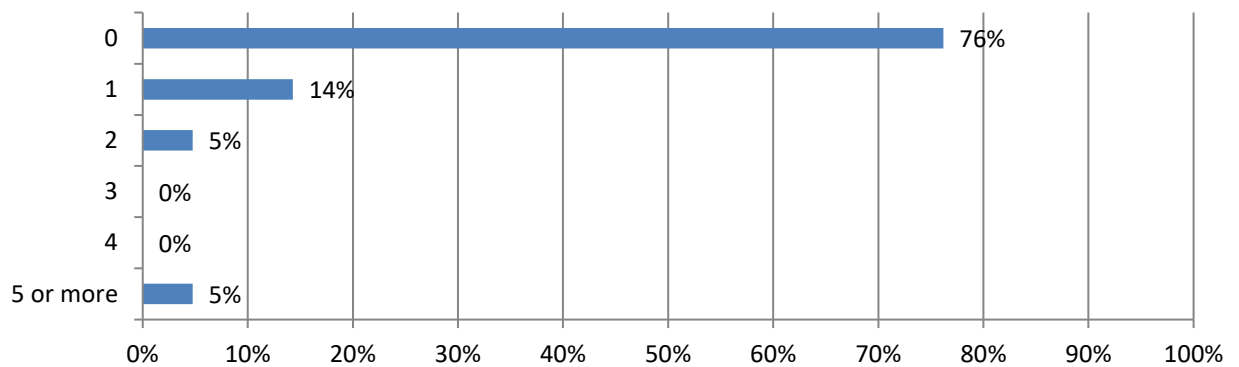
### Pennsylvania Results

*Total 30 responses; Responses varied for some questions. Percentages are based on responses to each question and may not sum to 100 due to rounding (total specified in some questions).*

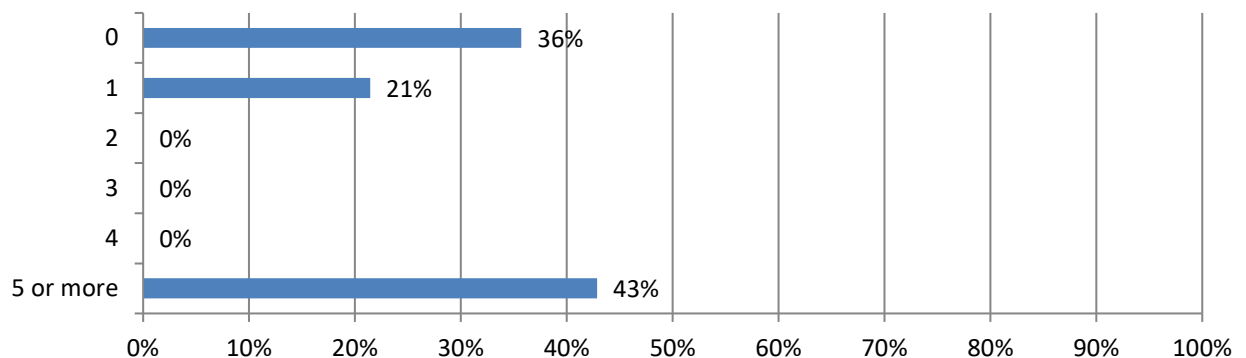
#### 1. In the past 12 months, how many crashes involving a motor vehicle have occurred at a highway work zone where your firm operates? (25 Responses)



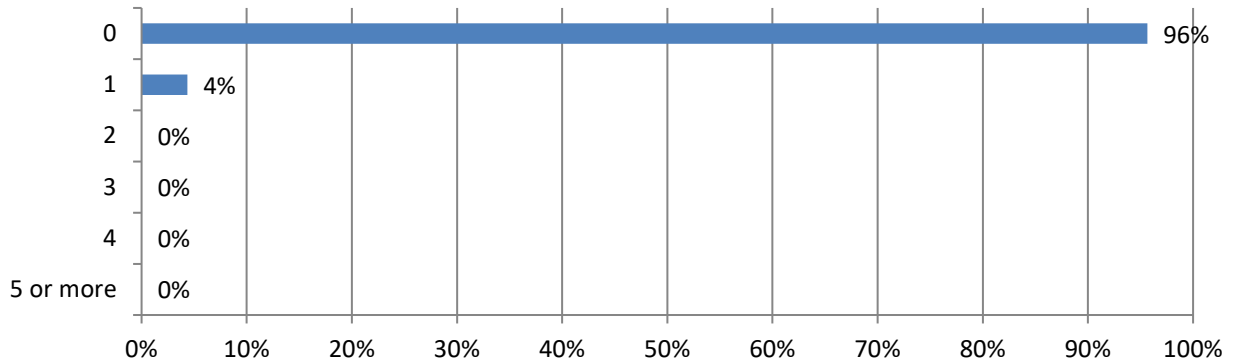
#### 2. How many construction workers were injured in these crashes? (21 Responses)



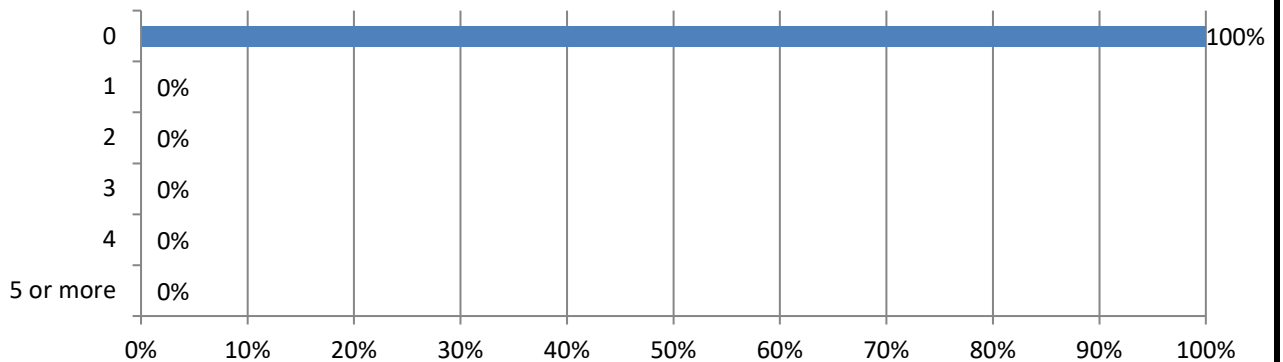
#### 3. How many drivers or passengers were injured in these crashes? (14 Responses)



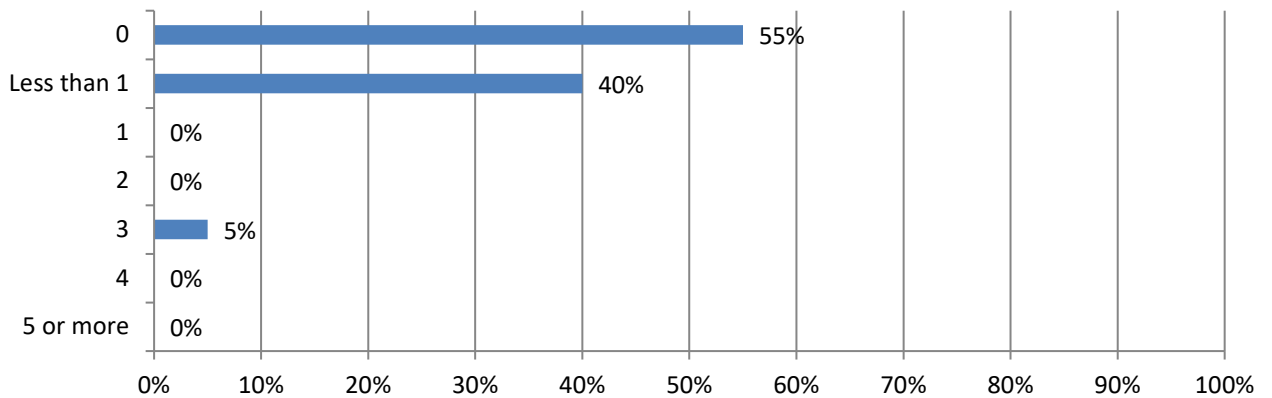
**4. How many construction worker fatalities resulted from these crashes? (23 Responses)**



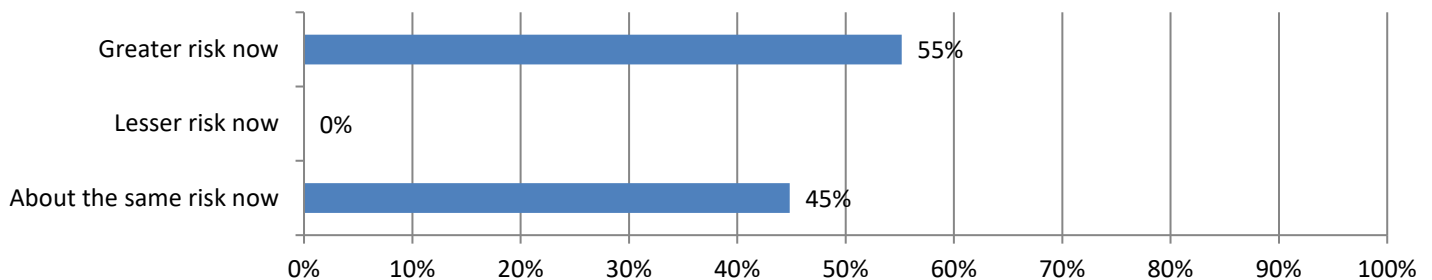
**5. How many driver or passenger fatalities resulted from these crashes? (19 Responses)**



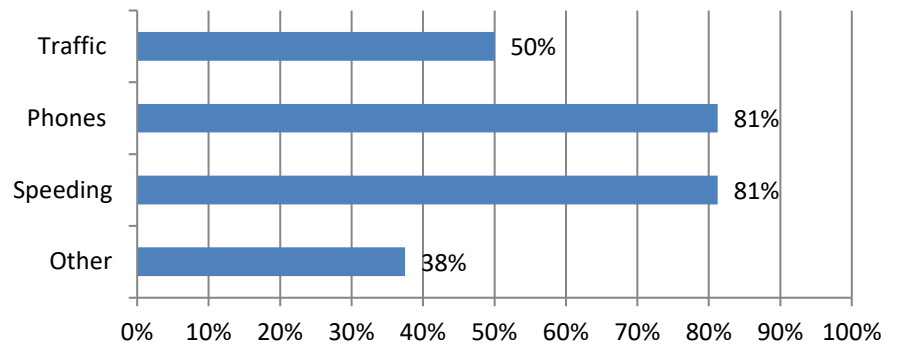
**6. How many days have your firm's projects been delayed because of these crashes? (20 Responses)**



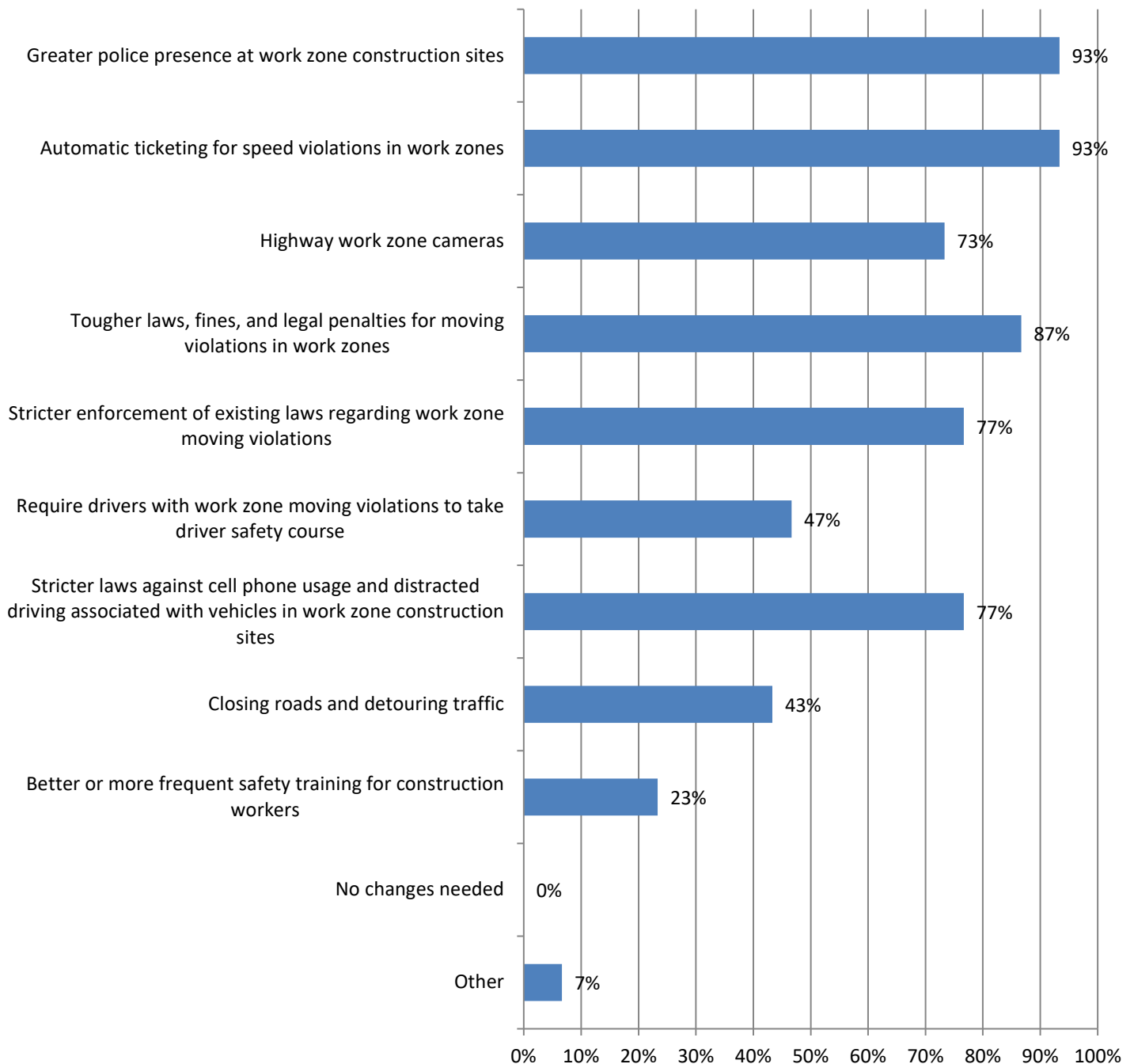
**7. In your opinion, how much of a risk are highway work zone crashes now compared to one year ago? (29 Responses)**



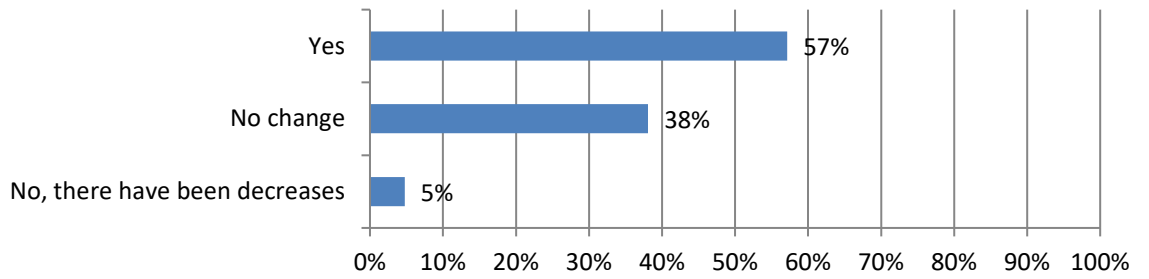
**8. Why do you think highway work zone construction is more dangerous today compared to one year ago?**  
(16 Responses)



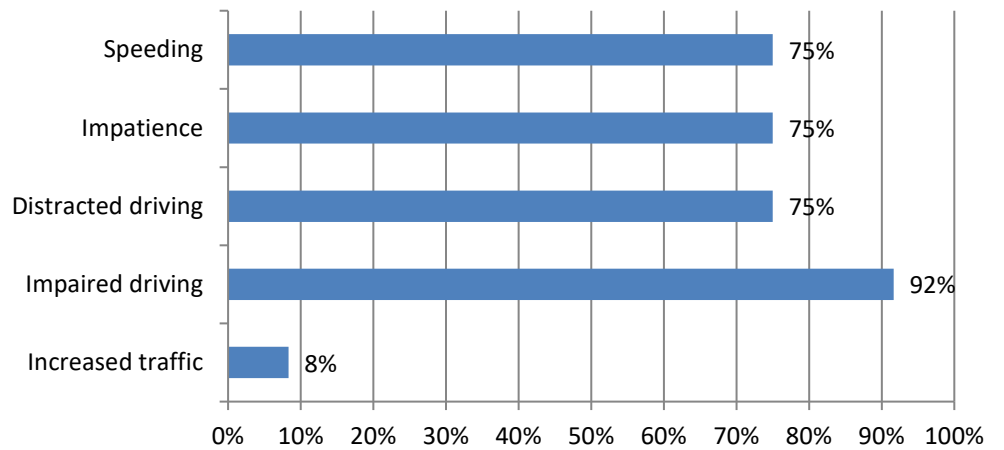
**9. Would any of these measures help reduce the number of highway work zone crashes, injuries and/or fatalities?**  
(30 Responses)



**10. Has there been an increase in work zone crashes when performing night work? (21 Responses)**



**11. If you answered yes, what do you attribute this to? (12 Responses)**



**12. Does your state have a vehicular homicide law in place that would apply to drivers who cause fatalities among highway work zone workers? (5 Responses)**

