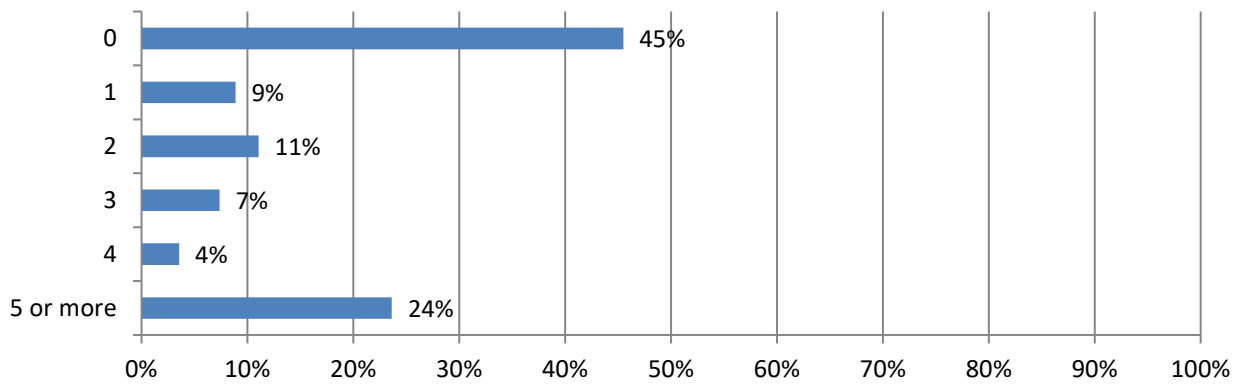




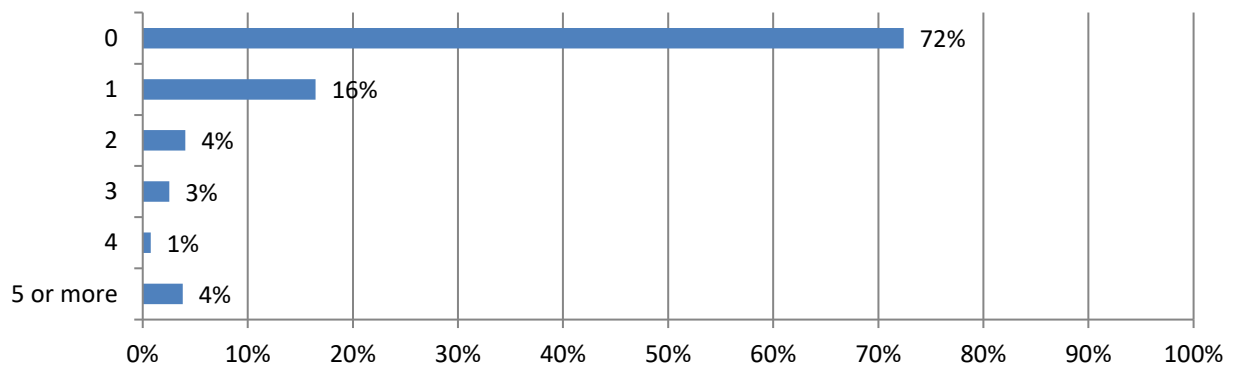
2023 Work Zone Awareness Survey Results National Results

Total 901 responses; Responses varied for some questions. Percentages are based on responses to each question and may not sum to 100 due to rounding (total specified in some questions).

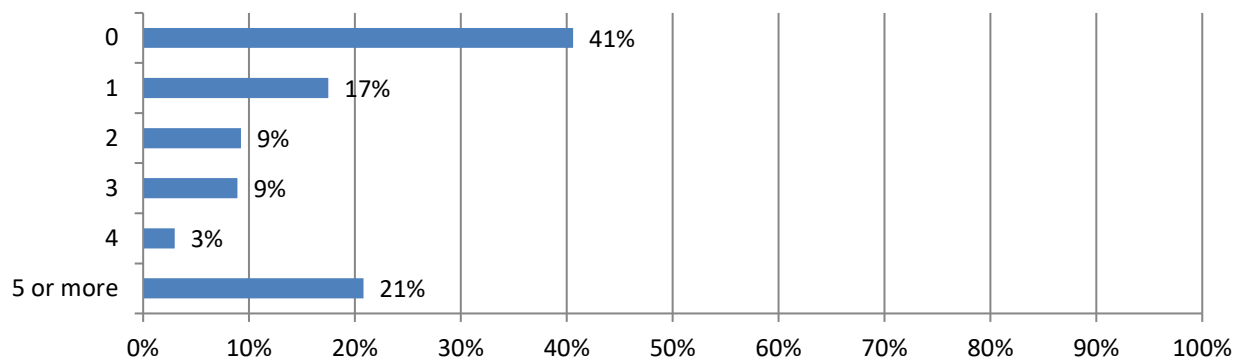
1. In the past 12 months, how many crashes involving a motor vehicle have occurred at a highway work zone where your firm operates? (732 Responses)



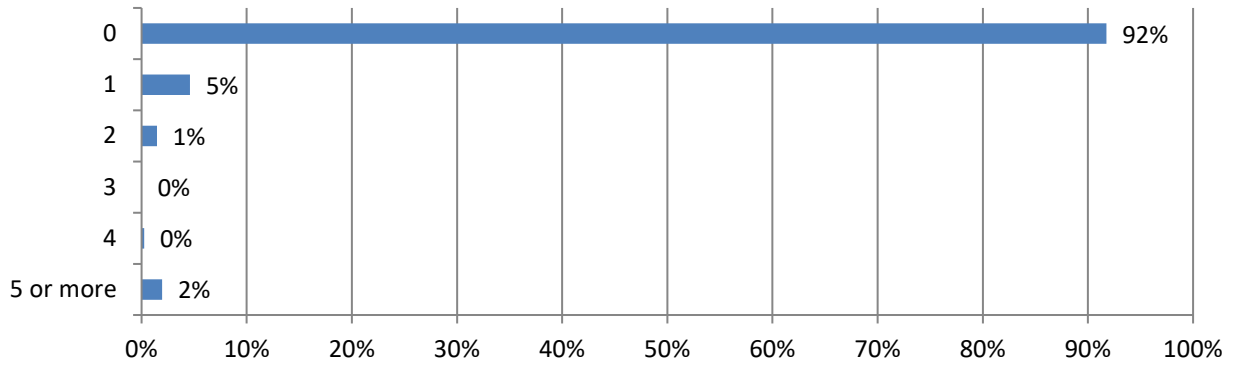
2. How many construction workers were injured in these crashes? (395 Responses)



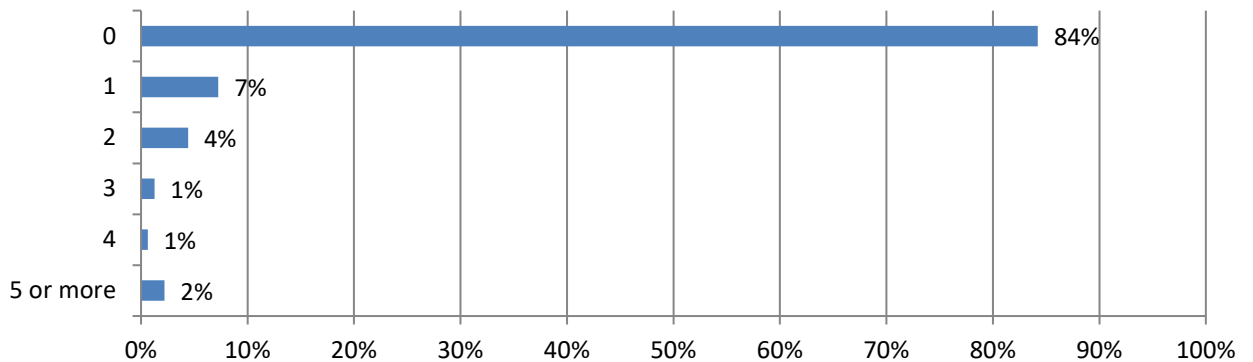
3. How many drivers or passengers were injured in these crashes? (303 Responses)



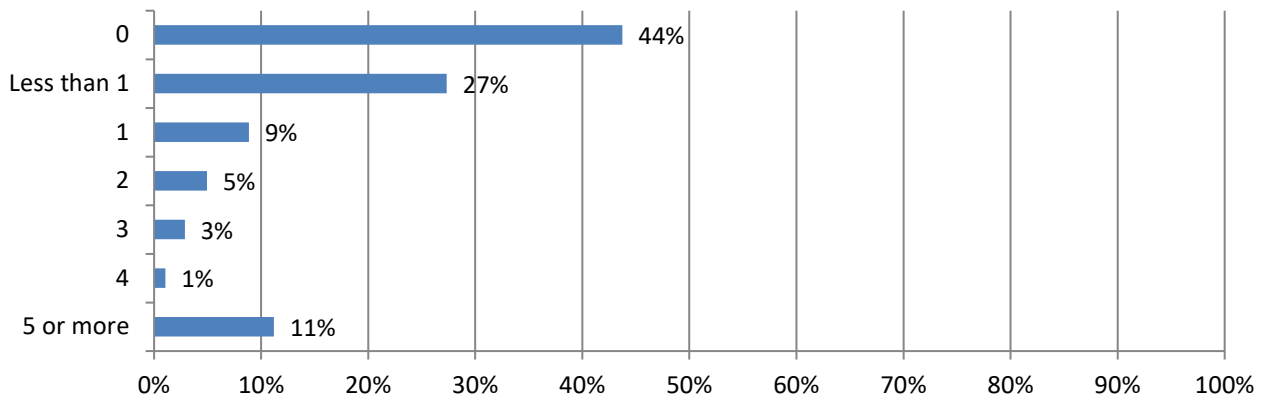
4. How many construction worker fatalities resulted from these crashes? (412 Responses)



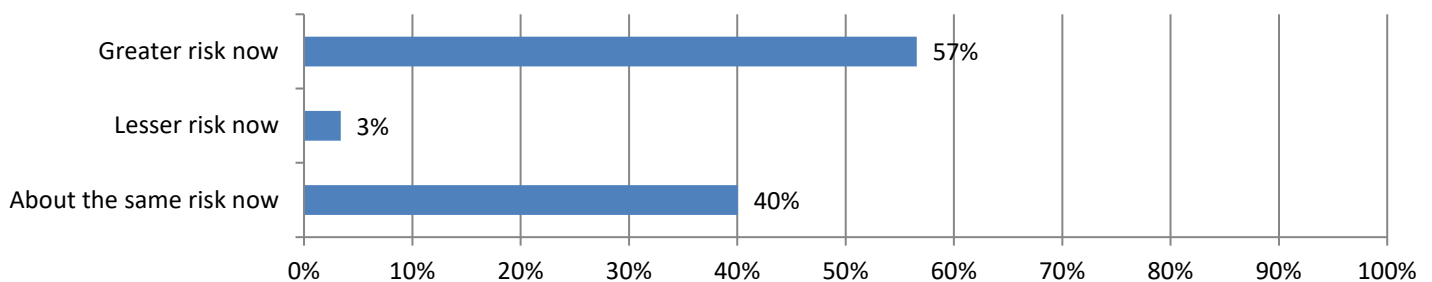
5. How many driver or passenger fatalities resulted from these crashes? (317 Responses)



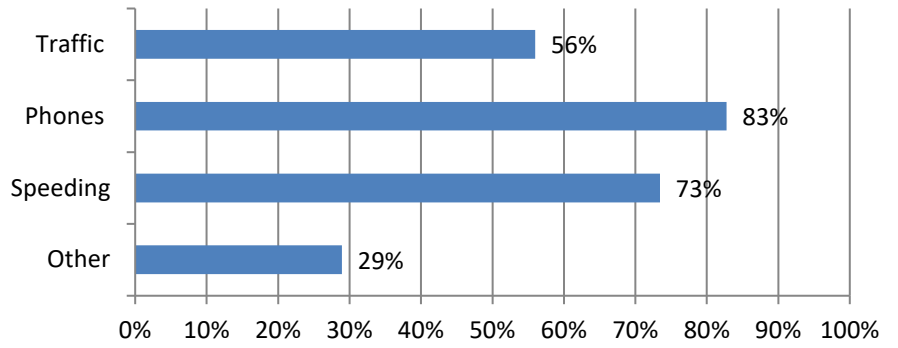
6. How many days have your firm's projects been delayed because of these crashes? (384 Responses)



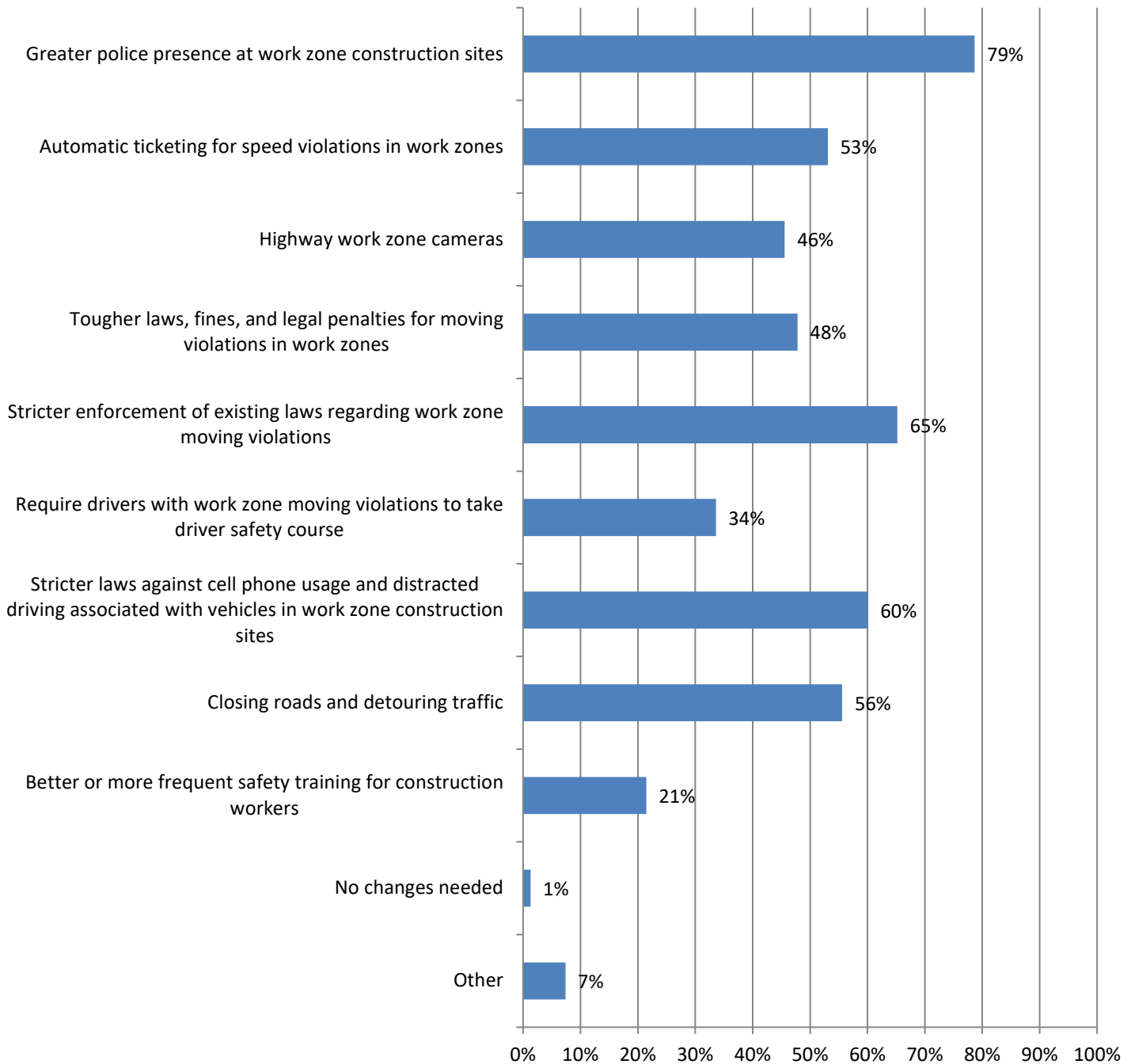
7. In your opinion, how much of a risk are highway work zone crashes now compared to one year ago? (739 Responses)



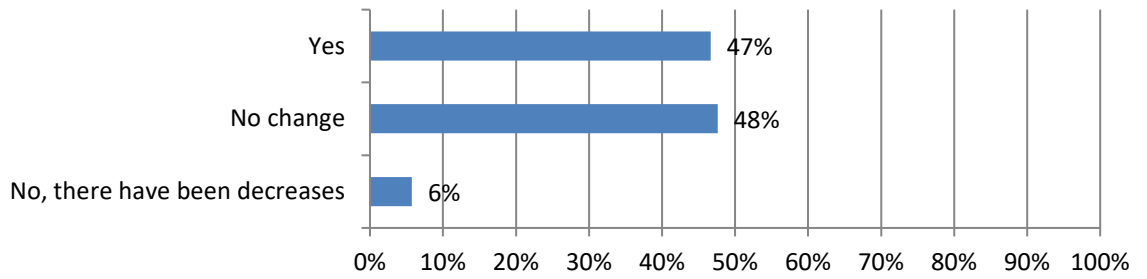
8. Why do you think highway work zone construction is more dangerous today compared to one year ago?
(418 Responses)



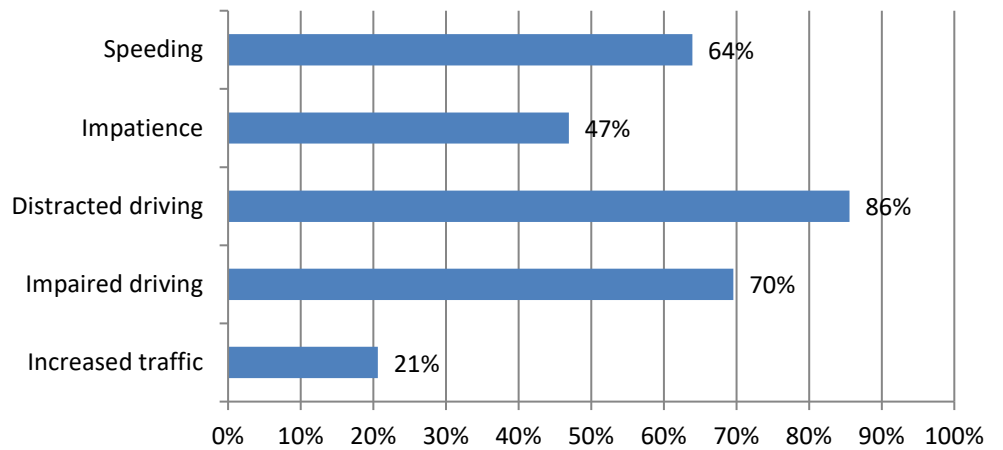
9. Would any of these measures help reduce the number of highway work zone crashes, injuries and/or fatalities?
(759 Responses)



10. Has there been an increase in work zone crashes when performing night work? (418 Responses)



11. If you answered yes, what do you attribute this to? (194 Responses)



12. Does your state have a vehicular homicide law in place that would apply to drivers who cause fatalities among highway work zone workers? (242 Responses)

