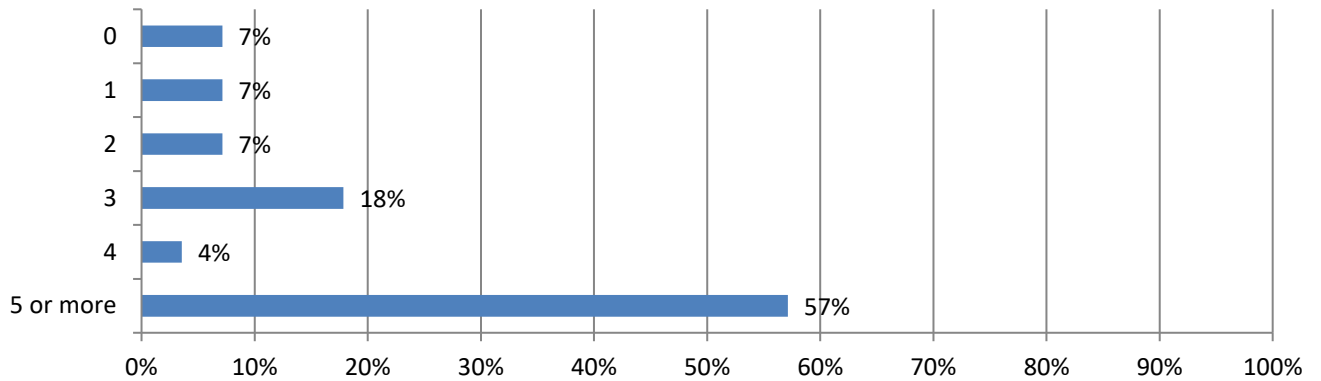




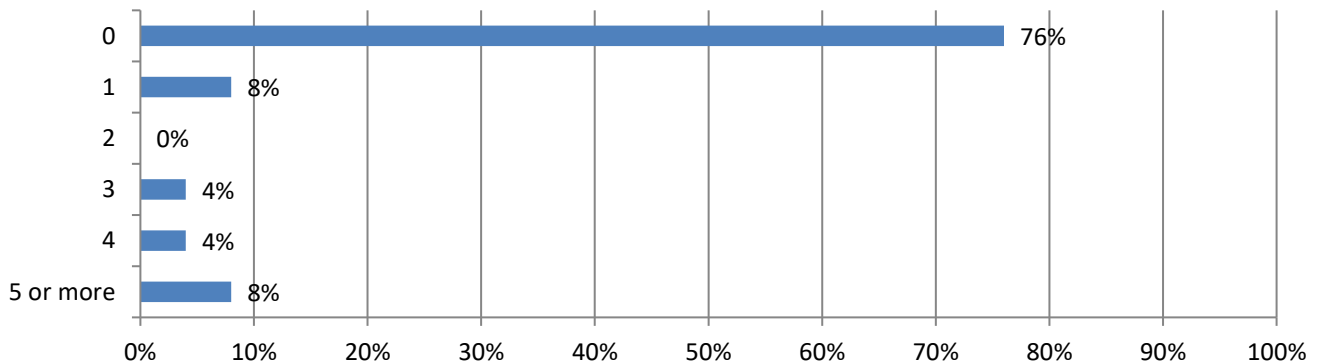
## 2022 Work Zone Awareness Survey Results South Carolina Results

Total 38 responses; Responses varied for some questions. Percentages are based on responses to each question and may not sum to 100 due to rounding (total specified in some questions).

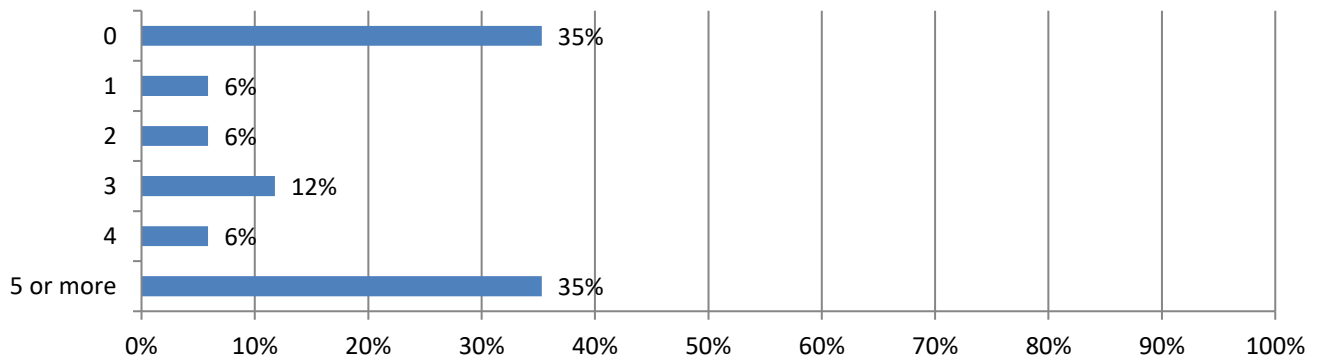
### 1. In the past 12 months, how many crashes involving a motor vehicle have occurred at a highway work zone where your firm operates? (28 Responses)



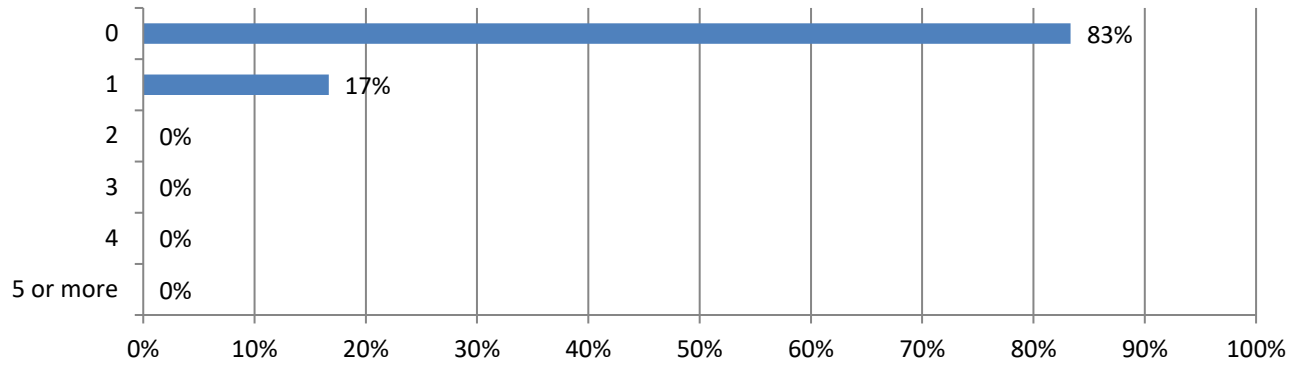
### 2. How many construction workers were injured in these crashes? (25 Responses)



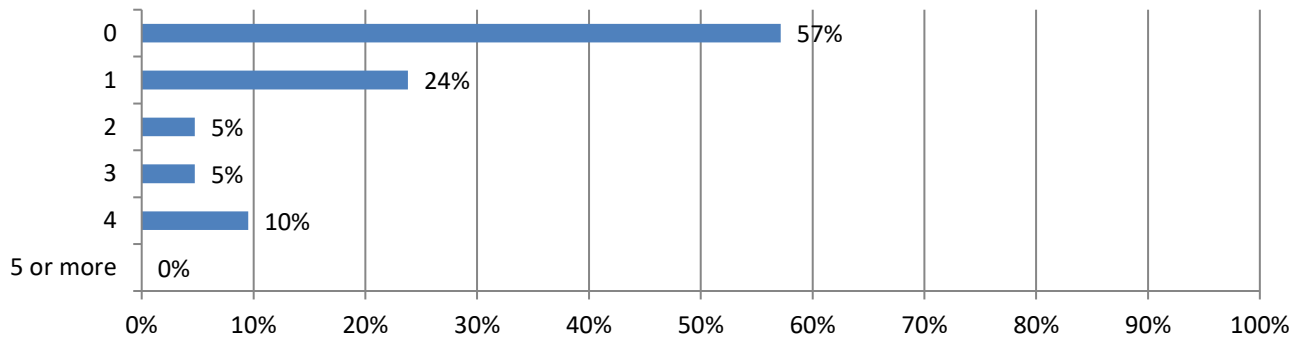
### 3. How many drivers or passengers were injured in these crashes? (17 Responses)



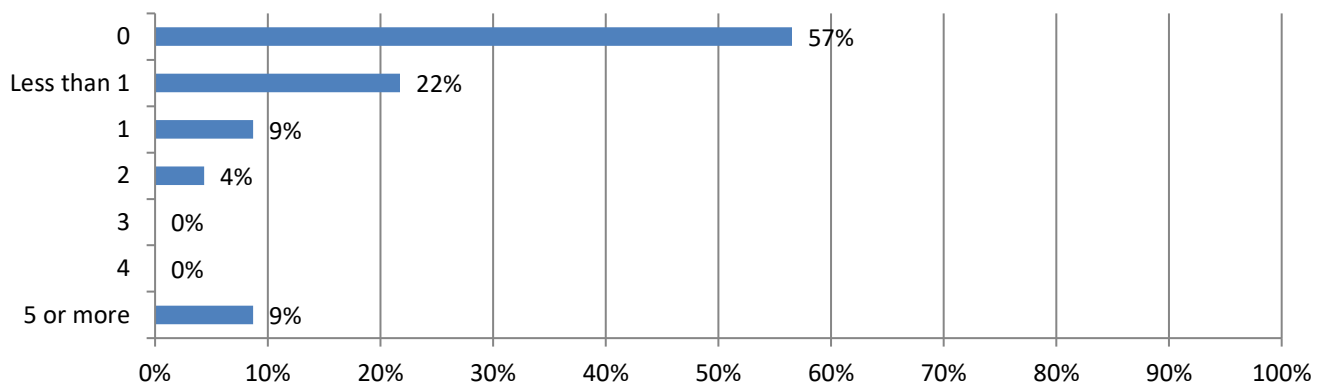
**4. How many construction worker fatalities resulted from these crashes? (30 Responses)**



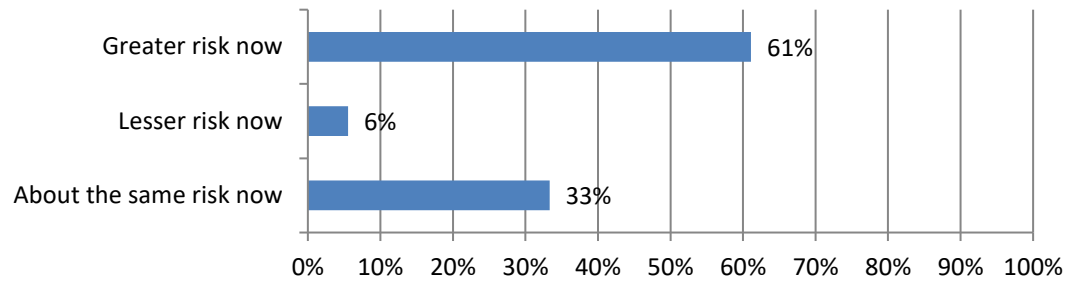
**5. How many driver or passenger fatalities resulted from these crashes? (21 Responses)**



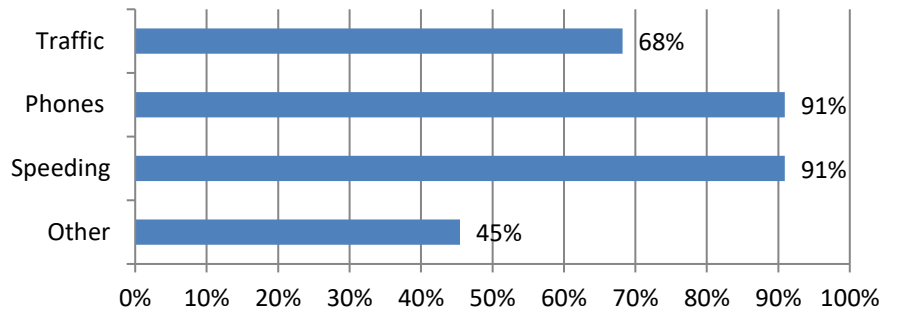
**6. How many days have your firm's projects been delayed because of these crashes? (23 Responses)**



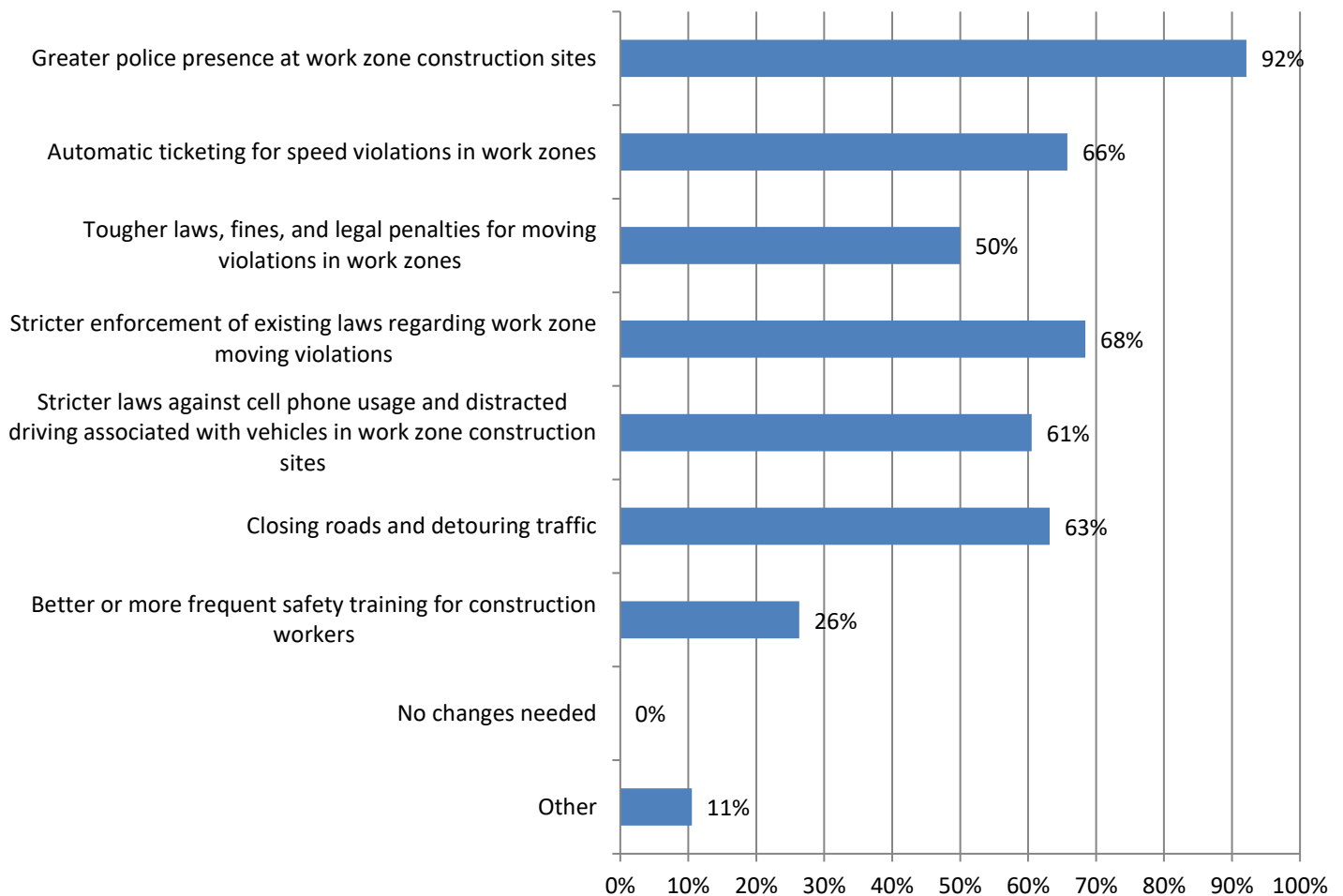
**7. In your opinion, how much of a risk are highway work zone crashes now compared to one year ago?**  
**(36 Responses)**



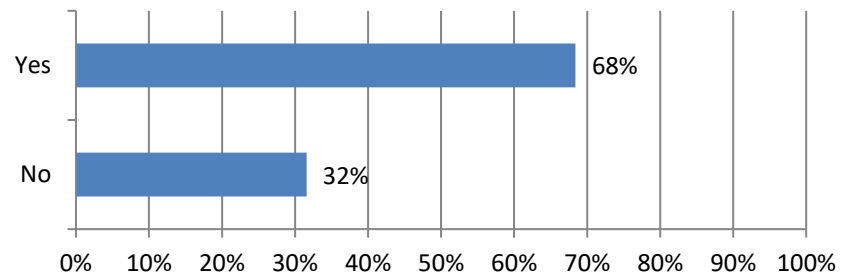
**8. Why do you think highway work zone construction is more dangerous today compared to one year ago?**  
**(22 Responses)**



**9. Would any of these measures help reduce the number of highway work zone crashes, injuries and/or fatalities?**  
**(38 Responses)**



**10. Has there been an increase in work zone crashes when performing night work? (19 Responses)**



**11. If you answered yes, what do you attribute this to? (13 Responses)**

