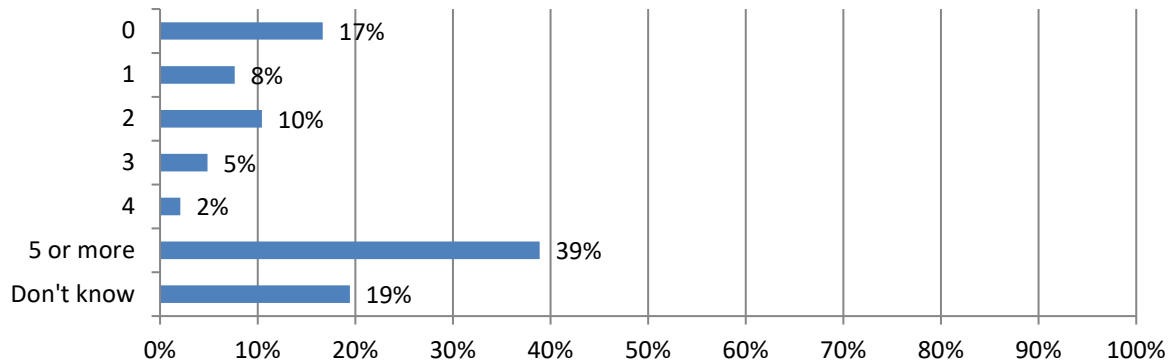




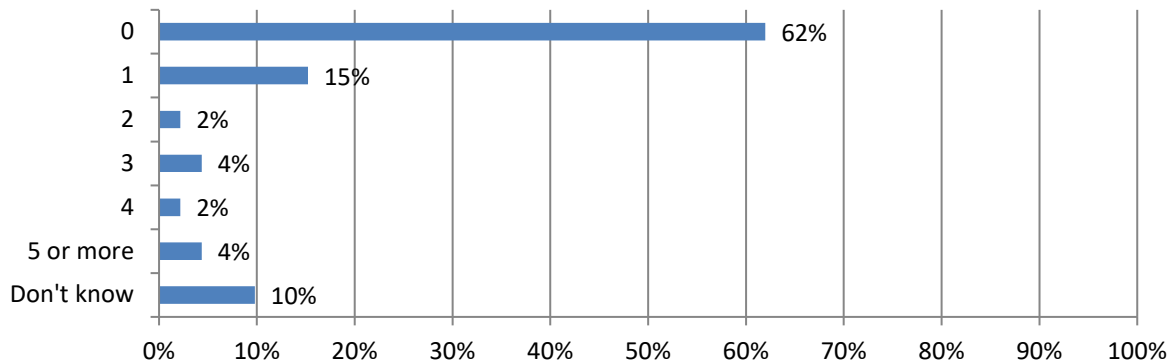
## 2018 Work Zone Awareness Survey Results National – Midwest Results

Total 145 responses; Responses varied for some questions. Percentages are based on responses to each question and may not sum to 100 due to rounding (total specified in some questions).

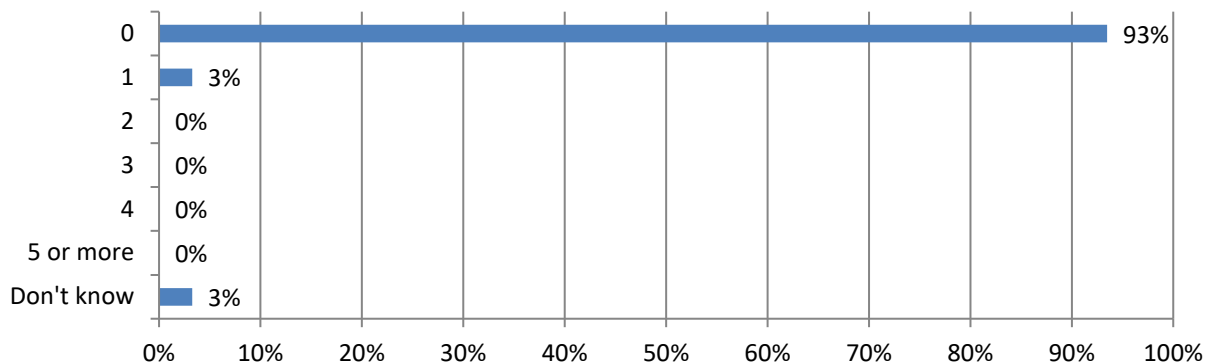
### 1. In the past 12 months, how many crashes involving a motor vehicle have occurred at a highway work zone where your firm operates? (144 Responses)



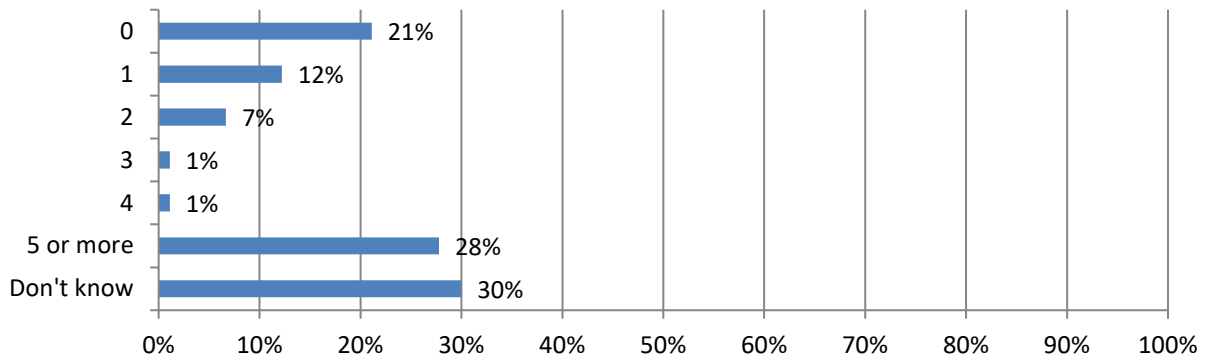
### 2. How many construction workers were injured in these crashes? (92 Responses)



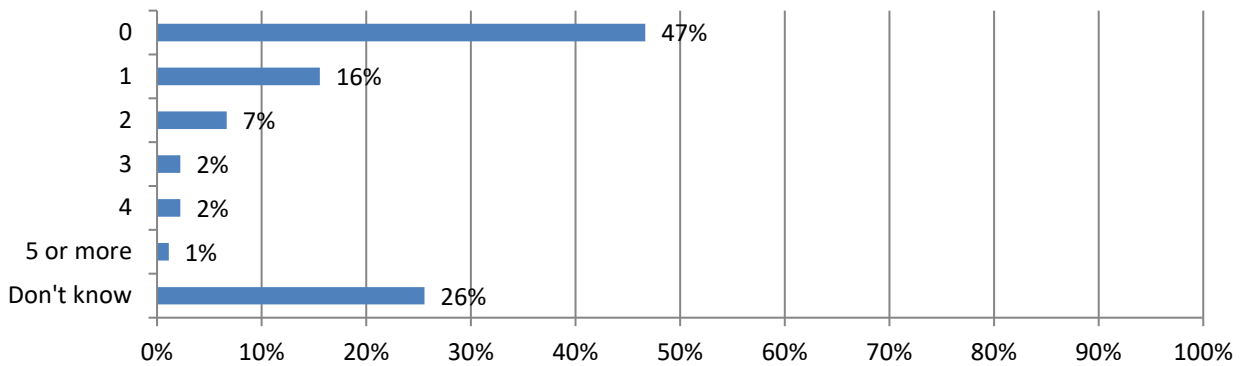
### 3. How many construction worker fatalities resulted from these crashes? (92 Responses)



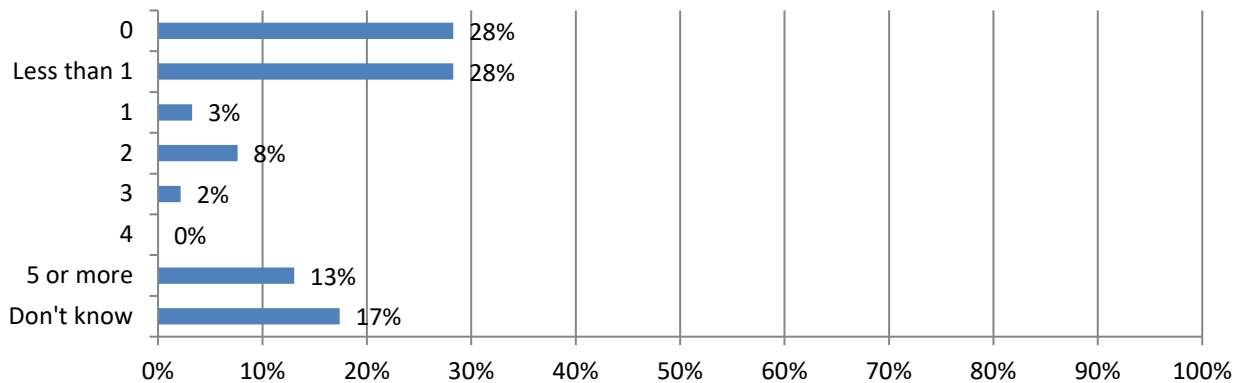
**4. How many drivers or passengers were injured in these crashes? (90 Responses)**



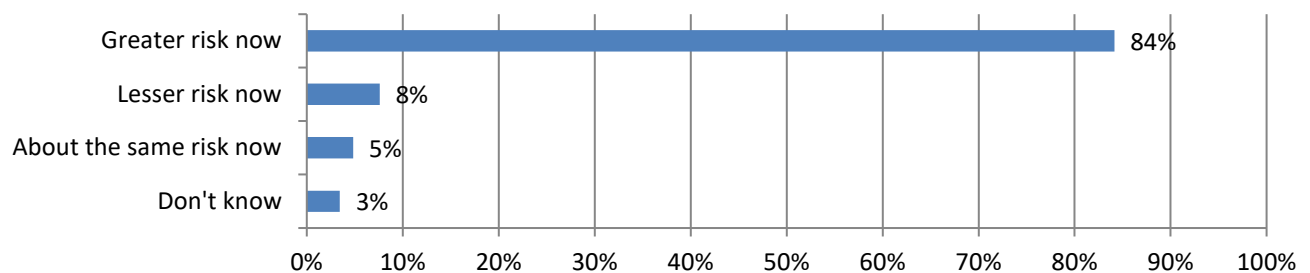
**5. How many driver or passenger fatalities resulted from these crashes? (90 Responses)**



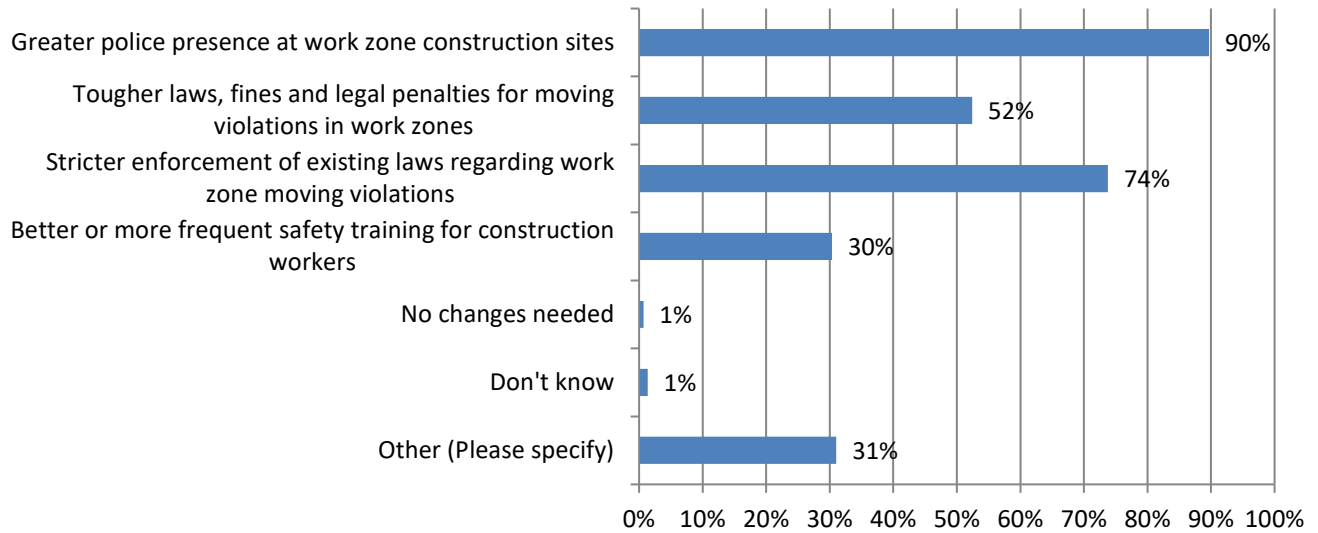
**6. How many days have your firm's projects been delayed because of these crashes? (92 Responses)**



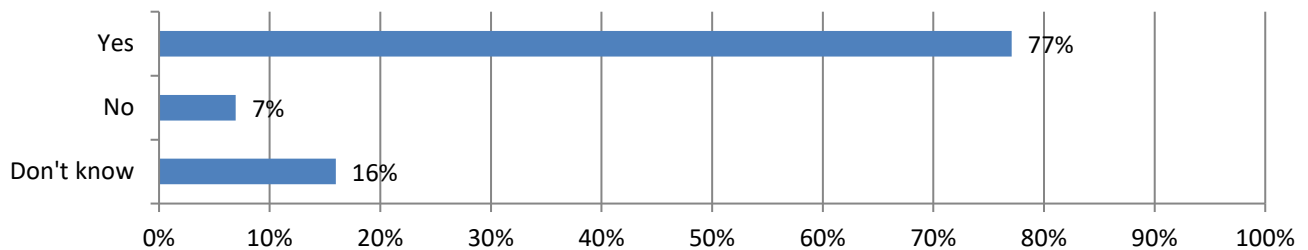
**7. In your opinion, how much of a risk are highway work zone crashes now compared to a decade ago? (145 Responses)**



**8. Would any of these measures help reduce the number of highway work zone crashes, injuries and/or fatalities? (some respondents marked multiple answers) (145 Responses)**



**9. Would increased use of positive barriers where traffic is a concern help to reduce injuries and fatalities on your projects? (144 Responses)**



**10. Why do you think positive barriers are not regularly used? (some respondents marked multiple answers) (145 Responses)**

