

# COVID-19 RESPONSE

AUTHORS: HENRY NUTT III | ANDY RHODES | NATASHA SCHNAITMANN

LEAN MITIGATION, BEST PRACTICES THAT CAN  
KEEP WORKERS SAFE AND PRODUCTIVE



V1.0 | | Last Update: 5.11.2020

## COMMUNICATE WITH VISUAL AIDS

- Implement staggered start times (when possible) to mitigate high traffic
- Address safety concerns with field leads to promote transparent conversations and effective solutions
- Use of visual aids that illustrate new procedures and project policies
- Open additional access points for project entry to mitigate crowding and delays



## UTILIZE PREFABRICATION & MODULAR ASSEMBLIES

- Challenge teams to seek additional ways to remove labor from jobsites
- Plan to fabricate larger modules that remove workforce off project



Pre-Fabricated Racks



Pre-Assembled Bathroom Pods



Pre-Fabricated Medical Gas, In-Wall Assemblies

## MANAGE MATERIAL AND EQUIPMENT FLOW ON PROJECTS

- Implement (where possible) inspections through Facetime – use GoPro Camera
- Select partners that clearly identify Covid-19 related risk and opportunities
- Develop forms that track specific agreed upon extra work due to Covid-19
- Reduce unnecessary rental equipment and tools off project



Rental Equipment

## MANAGE WORKFORCE TRAFFIC FLOW & SAFE DISTANCING

- Use visual aids for spacing location
- Mandate use of stairs when short distances are required
- Make safety visually obvious – one way scaffold, walkways and stair towers; have the cleaning crews in different colored vests; spacing marked on floors, load limits on hoists visually obvious
- Walk up two floors, hoist stop every second floor and people walk down
- People working within 6 feet of each other need a permit (like hot work) that must be displayed on clothing
- Place 6 ft high portable shields for people working in high traffic areas
- All walkways and paths are one way
- Stairs are one way up or down
- All material deliveries must have a clear label on them (foreman name, phone number, area to be unloaded, floor) so the materials handlers do not have to get verbal instructions from drivers or others
- Utilize digital forms (via cell phones) to access jobsites for deliveries

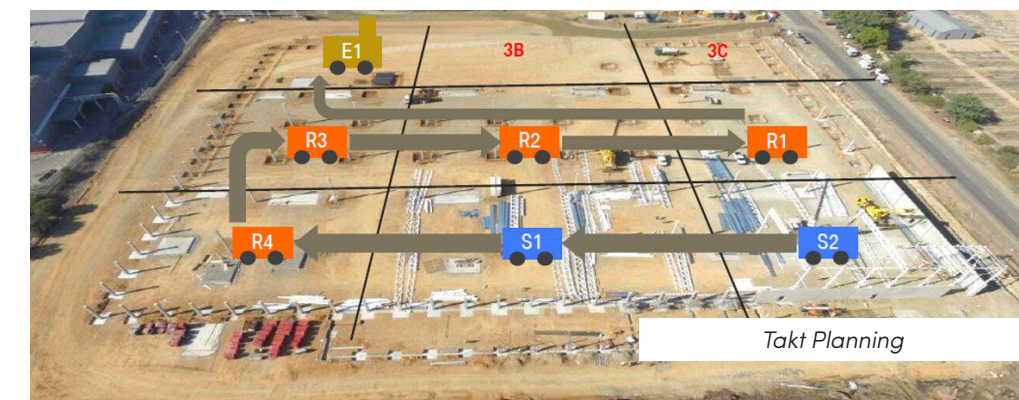


Daily huddles w/ social distancing

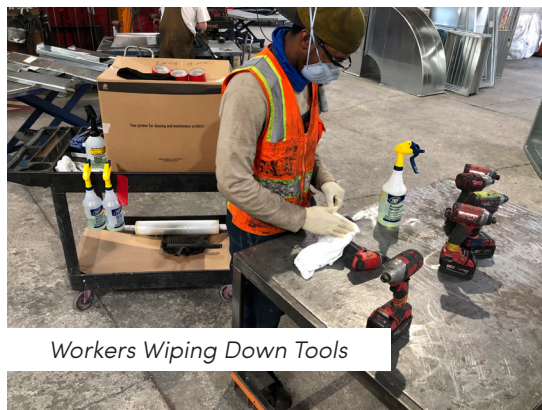


## CREATE SAFE WORK ZONES USING TAKT PLANNING

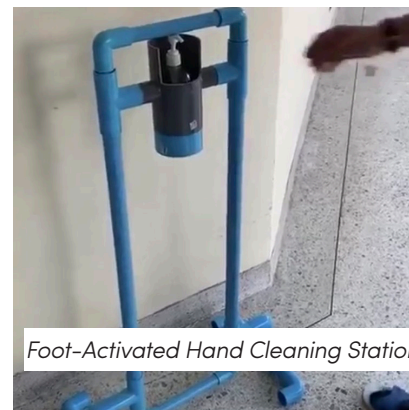
- Use of takt planning to create line of balance in workforce
- Takt planning decreases inter trade traffic
- Implement Just-In-Time (JIT) delivery
- Use design teams that incorporate Covid-19 spacing requirements during the install and for the End-User
- Takt planning treats space as a critical constraint. By optimizing the flow of workers throughout the space, takt planning helps with physical distancing and reduces the amount of rework or punchlist items. These results help maintain healthy workers AND a healthy bottom line.
- Takt planning must be used and crews may only be in their designated work area. No other trades may walk through those areas



Takt Planning



Workers Wiping Down Tools



Foot-Activated Hand Cleaning Station