

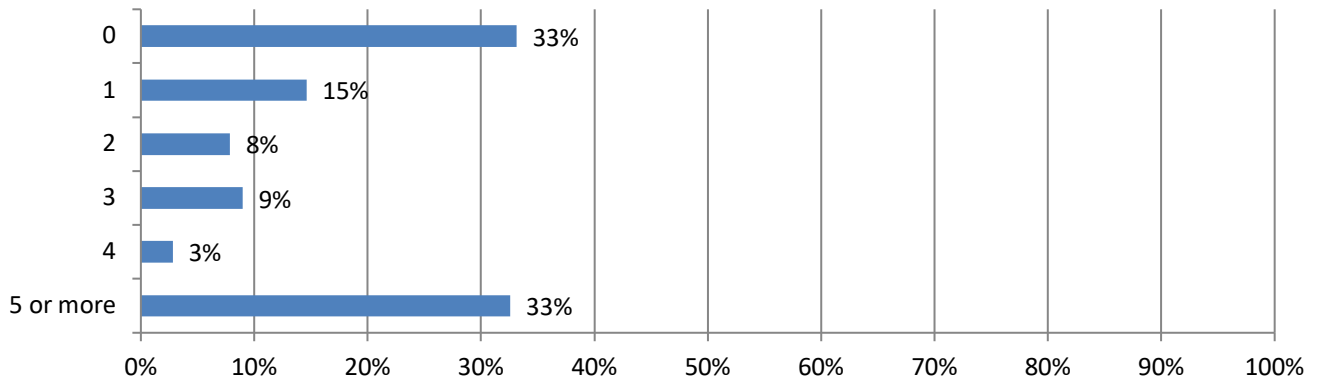


2020 Work Zone Awareness Survey Results

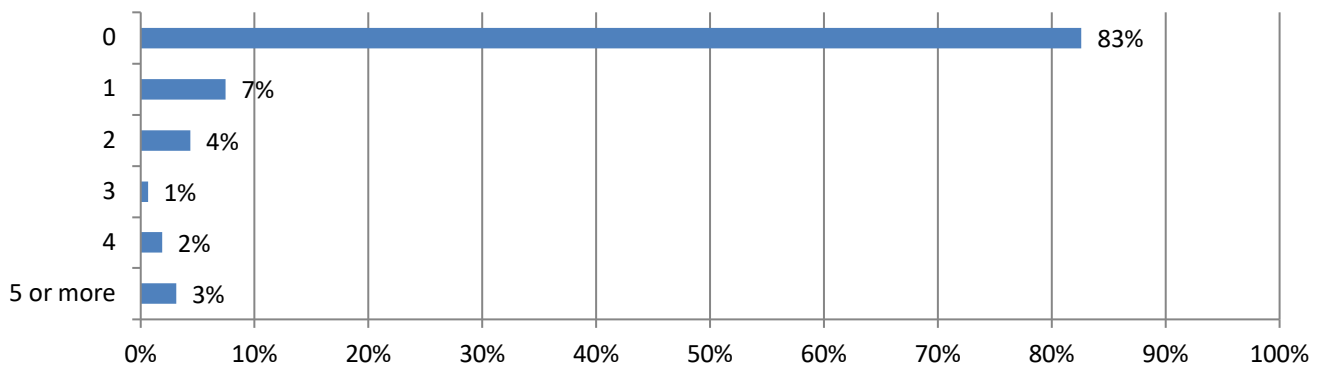
National Results

Total 224 responses; Responses varied for some questions. Percentages are based on responses to each question and may not sum to 100 due to rounding (total specified in some questions).

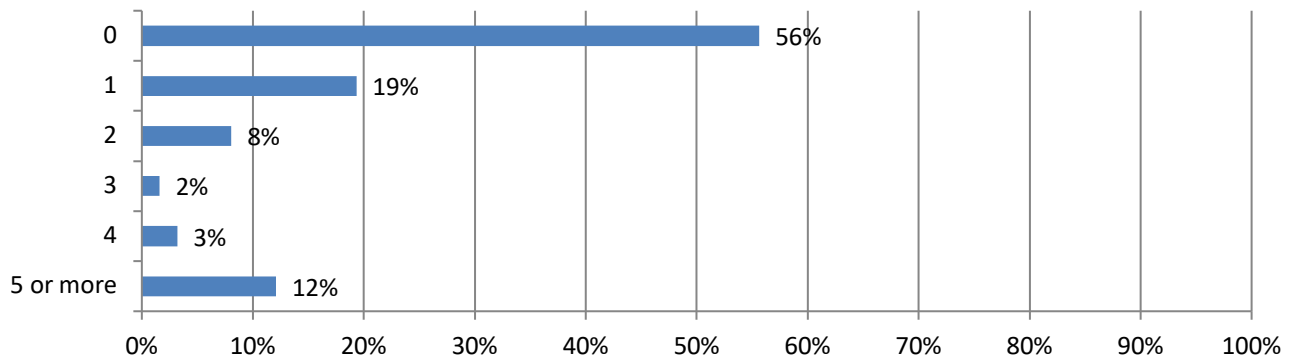
1. In the past 12 months, how many crashes involving a motor vehicle have occurred at a highway work zone where your firm operates? (178 Responses)



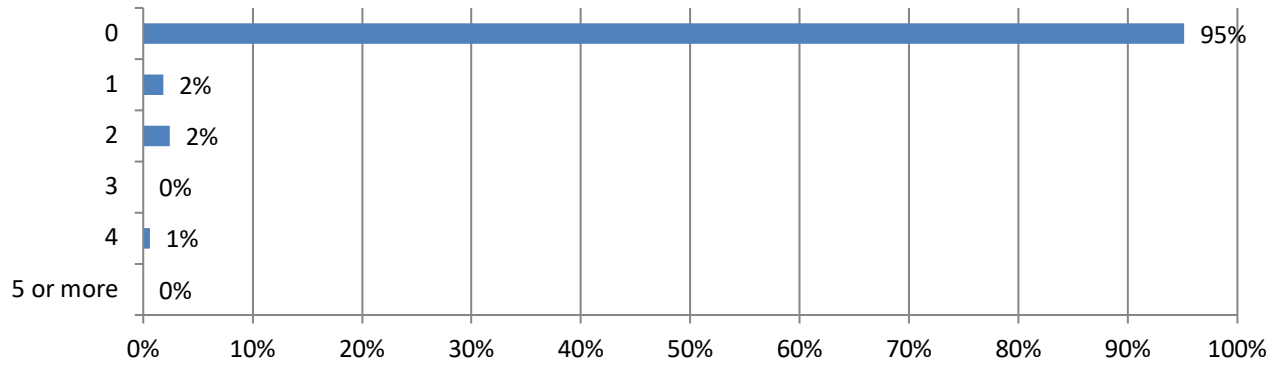
2. How many construction workers were injured in these crashes? (161 Responses)



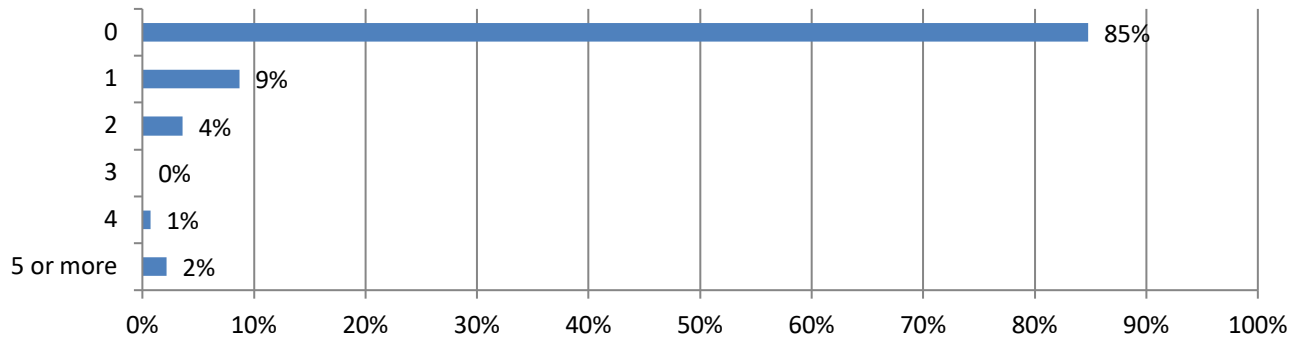
3. How many drivers or passengers were injured in these crashes? (124 Responses)



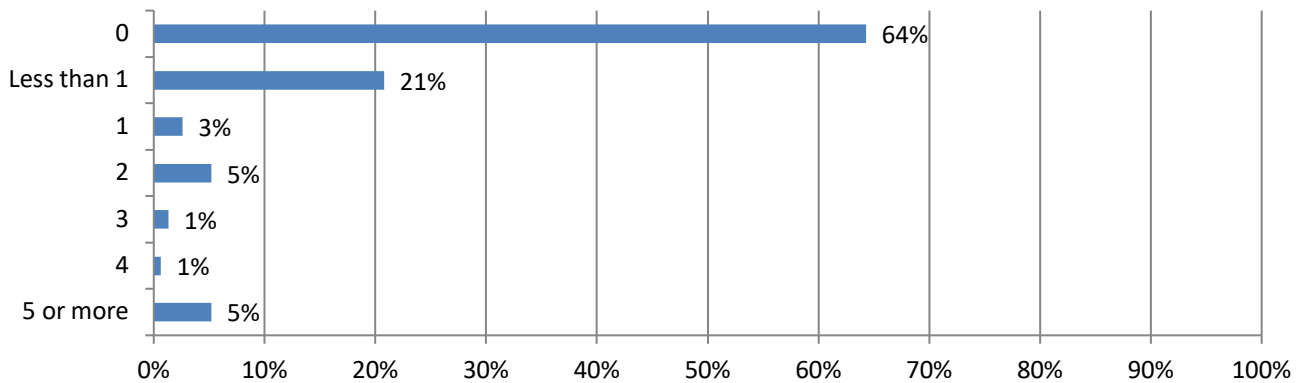
4. How many construction worker fatalities resulted from these crashes? (165 Responses)



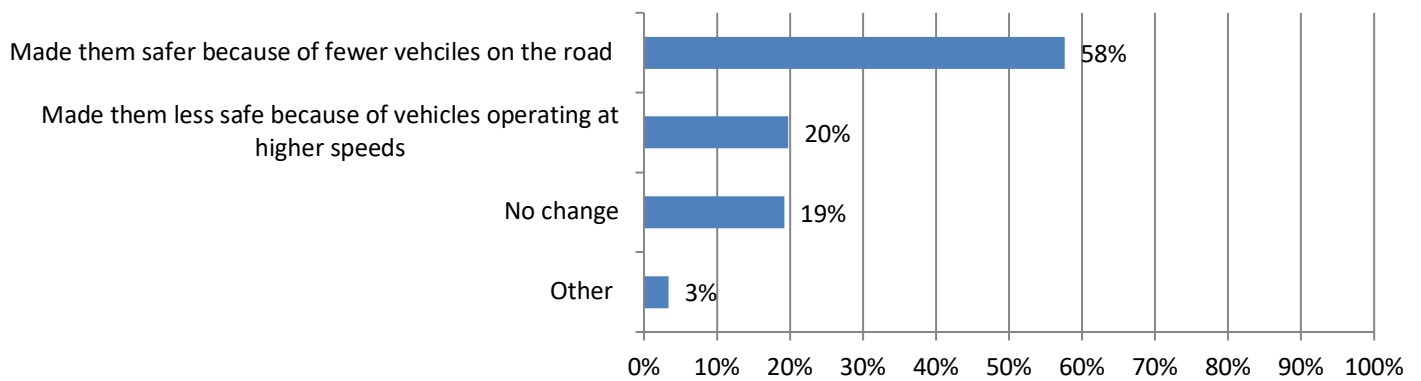
5. How many driver or passenger fatalities resulted from these crashes? (138 Responses)



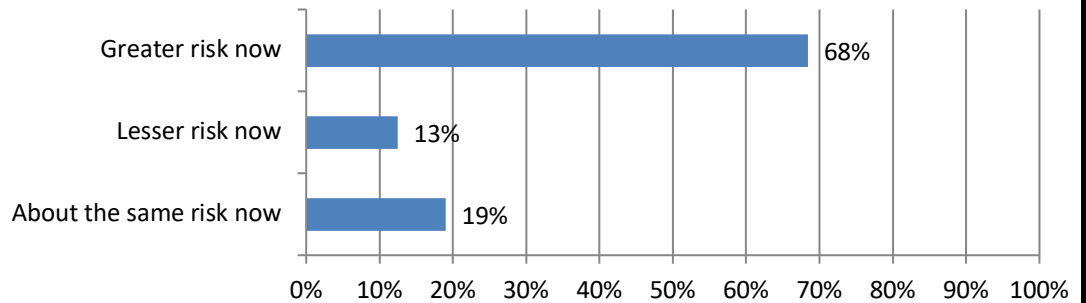
6. How many days have your firm's projects been delayed because of these crashes? (154 Responses)



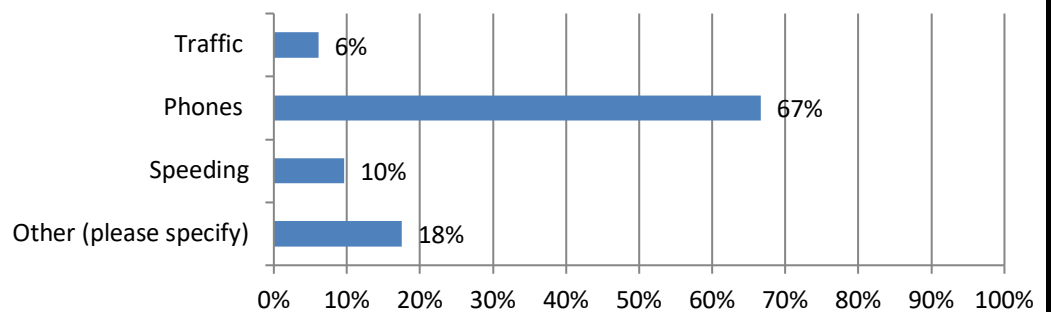
7. How have changes in highway traffic levels since the coronavirus impacted safety in highway work zones? (177 Responses)



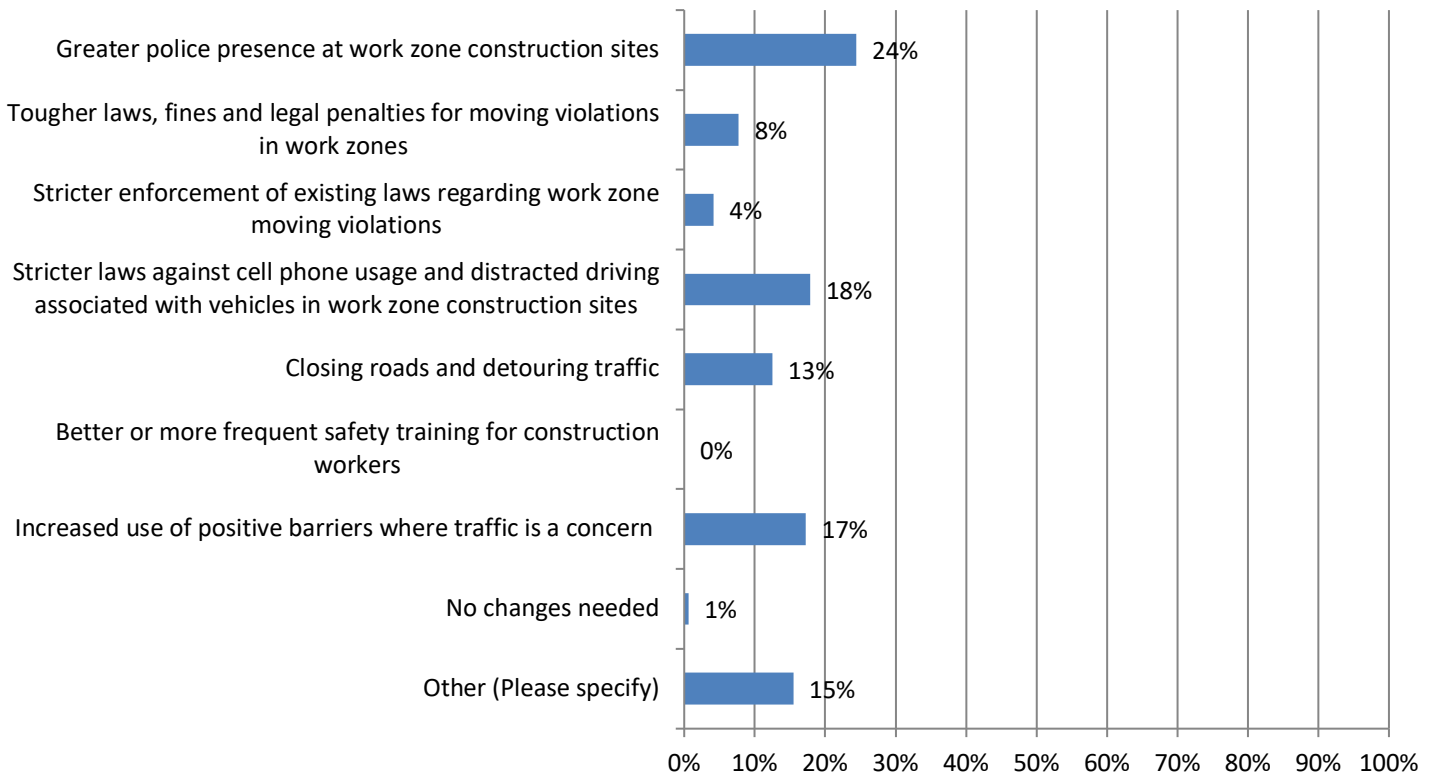
8. In your opinion, how much of a risk are highway work zone crashes now compared to a decade ago? (168 Responses)



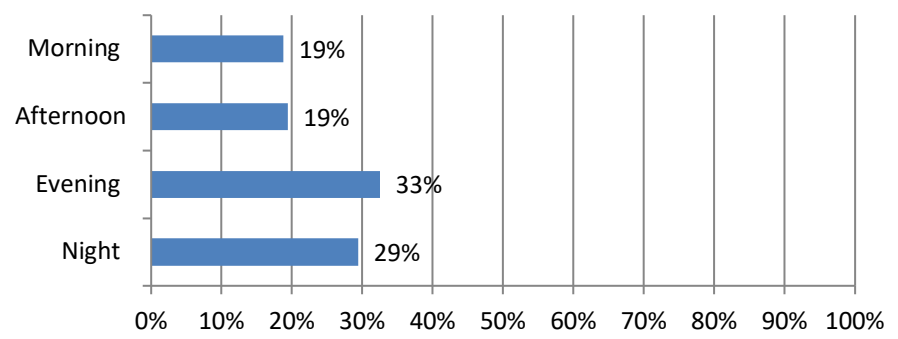
9. Why do you think highway work zone construction is more dangerous today compared to a decade ago? (Check all that apply) (114 Responses)



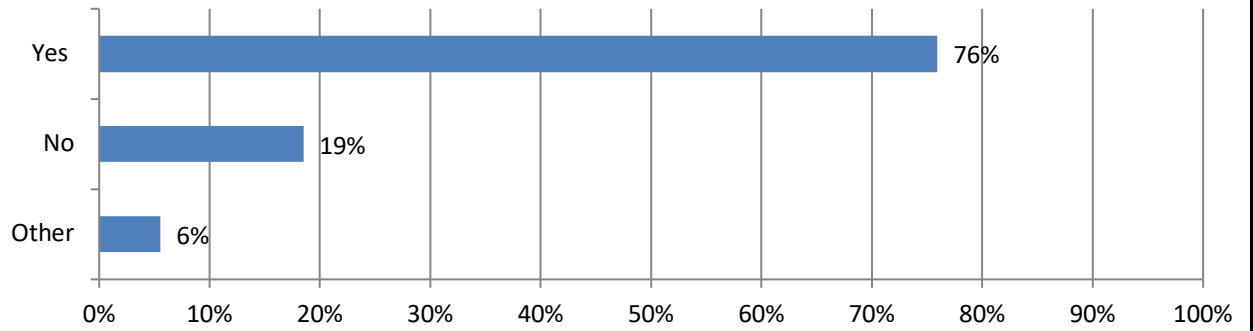
10. Would any of these measures help reduce the number of highway work zone crashes, injuries and/or fatalities? (Check all that apply) (168 Responses)



11. Is there a particular time of day where motorist intrusion into work zones occurs most often? (160 Responses)



12. Is there an increase in incidence when performing night work? (108 Responses)



13. If you answered yes, what do you attribute this to? (80 Responses)

