

AGC's 2009 HR Professionals and Training & Development Conference

WORKFORCE INVESTMENT SYSTEM

Grand Hyatt Atlanta
October 28, 2009

Pete Fleming
USDOL/ETA Atlanta




EMPLOYMENT AND TRAINING ADMINISTRATION
UNITED STATES DEPARTMENT OF LABOR

Agenda




1. Current Economy: Impact on the Construction Industry
2. Connect to Local Workforce System & Resources for Employers
3. Current & Upcoming: ARRA
4. Connecting to Grant Opportunities
5. Other Resources

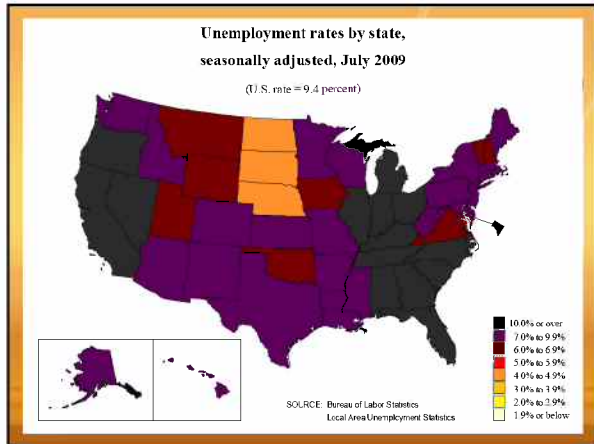


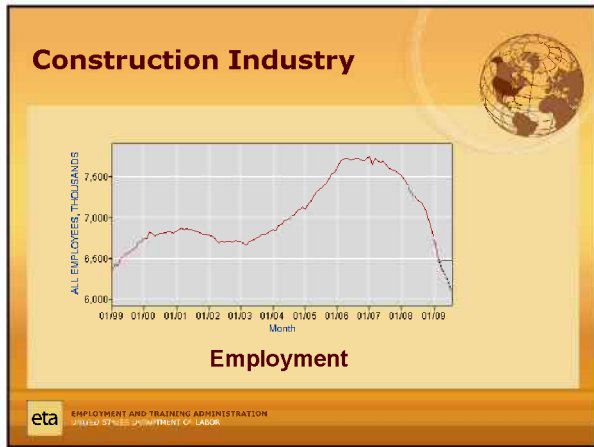

EMPLOYMENT AND TRAINING ADMINISTRATION
UNITED STATES DEPARTMENT OF LABOR

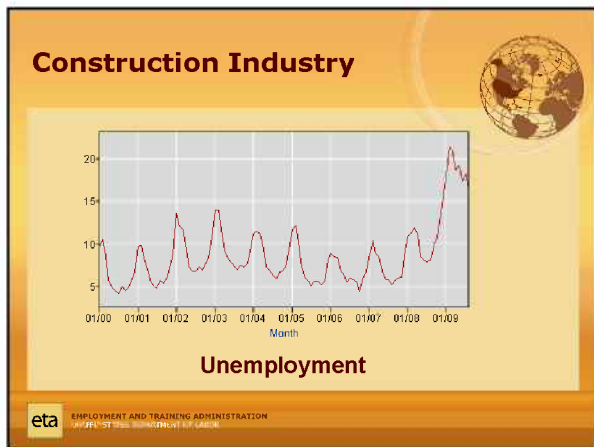
**1. Current Economy:
Impact on the Construction Industry**



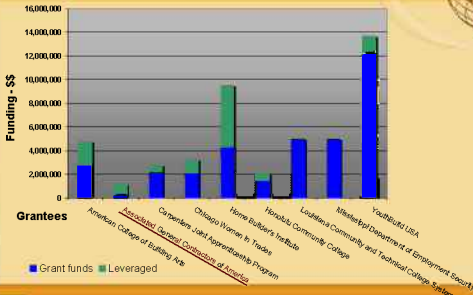

EMPLOYMENT AND TRAINING ADMINISTRATION
UNITED STATES DEPARTMENT OF LABOR







Original HGJTI Grants in Construction-Skilled Trades (since 2004):



eta EMPLOYMENT AND TRAINING ADMINISTRATION
U.S. DEPARTMENT OF LABOR

Green Job Training Grants

The Recovery Act designates **\$500 million** (of the \$750 million allotted for competitive grants) for projects that **prepare workers for careers in the energy efficiency and renewable energy sectors** described in Section 171(e)(1)(B) of the WIA.

Current solicitations are underway for:

- ✦ State Labor Market Information Improvement Grants
- ✦ Energy Training Partnership Grants
- ✦ Pathways Out of Poverty Grants
- ✦ State Energy Sector Partnership and Training Grants
- ✦ Green Capacity Building Grants

<http://greenjobtraininggrants.workforce3one.org/>

eta EMPLOYMENT AND TRAINING ADMINISTRATION
U.S. DEPARTMENT OF LABOR

What does that mean?

- ✦ Expanding the pipeline of youth entering construction
- ✦ Enhancing the capacity of high schools to prepare youth to enter post-secondary programs and jobs in construction
- ✦ Providing a career lattice approach
- ✦ Helping alternative labor pools, such as women, learn about career opportunities and gain skills needed in construction
- ✦ Enhancing the capacity of technical schools and the public workforce system to help alternative labor pools enter the industry

eta EMPLOYMENT AND TRAINING ADMINISTRATION
U.S. DEPARTMENT OF LABOR

What does that mean?

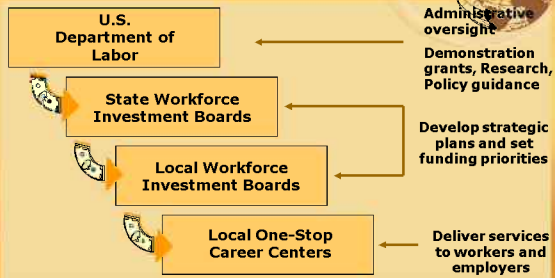


- ✦ Developing accelerated training programs that help dislocated workers quickly enter construction
- ✦ Creating comprehensive partnerships that help entry-level workers enhance their skills and utilize apprenticeship and other training programs

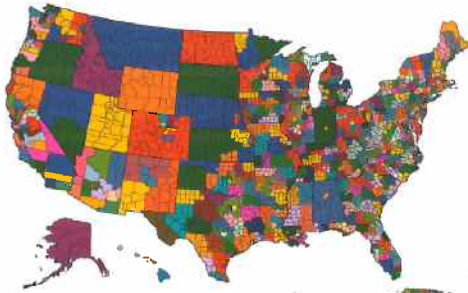
2. Connect To Local Workforce Investment System & Resources for Employers



The Public Workforce System



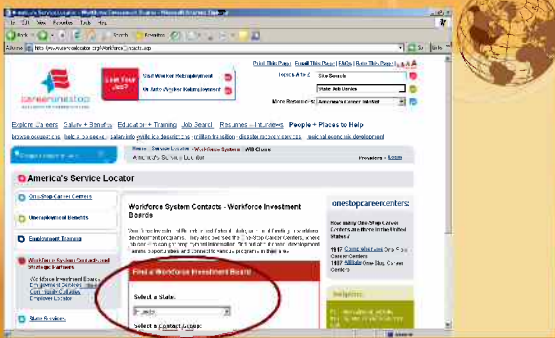
Local Workforce Areas in the US



Regional entities created to implement the workforce Investment Act of 1998

eta EMPLOYMENT AND TRAINING ADMINISTRATION
U.S. DEPARTMENT OF LABOR

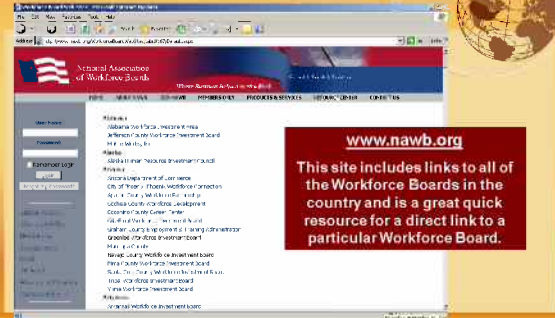
Workforce Investment Board Locator



eta EMPLOYMENT AND TRAINING ADMINISTRATION
U.S. DEPARTMENT OF LABOR

<http://www.servicelocator.org/WorkforceContacts.asp>

National Association of Workforce Boards (NAWB)



eta EMPLOYMENT AND TRAINING ADMINISTRATION
U.S. DEPARTMENT OF LABOR

<http://www.nawb.org/WorkforceBoardWebSites/tabid/167/Default.aspx>

One-Stops?

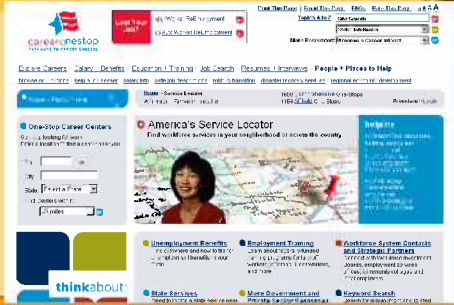


There are more than 3,200 One-Stop Career Centers located in all 50 states and Puerto Rico.

How do I find *my* one-stop?

eta EMPLOYMENT AND TRAINING ADMINISTRATION
United States Department of Labor

Employment Services Office Locator: www.servicelocator.org



eta EMPLOYMENT AND TRAINING ADMINISTRATION
United States Department of Labor
<http://www.servicelocator.org/EmploymentServices.asp>

Services for Employers



You may be surprised how much the public workforce system has to offer businesses. Your local One-Stop can provide information on any of the following:

- ✦ UI Information
- ✦ Work Opportunity Tax Credit
- ✦ Hiring Workers with Disabilities
- ✦ Enterprise Zone Incentives
- ✦ Downsizing & Closing (Rapid Response)

eta EMPLOYMENT AND TRAINING ADMINISTRATION
United States Department of Labor

Employer Services Cont.

- ☛ State Offices of Apprenticeship
- ☛ Community-based Organizations, Community Colleges, or YouthBuild Program trainees
- ☛ On the Job Training
- ☛ Incumbent Worker Training
- ☛ Pre-employment Training
- ☛ Trade Adjustment Assistance training
- ☛ Job Posting/Referrals
- ☛ Work Keys Assessment

eta EMPLOYMENT AND TRAINING ADMINISTRATION
UNITED STATES DEPARTMENT OF LABOR

Region 3 State Contacts

Alabama:

- ☛ Alabama Department of Economic and Community Affairs (ADECA) (WIA) [<http://www.adeca.state.al.us/default.aspx>]
- ☛ Alabama Governor's Office of Workforce Development (WIA) [<http://www.owd.alabama.gov/>]
- ☛ Alabama Department of Industrial Relations (ES/UI) [<http://dir.alabama.gov/>]

Florida:

- ☛ Florida Agency for Workforce Innovation [<http://www.floridajobs.org/>]
- ☛ Workforce Florida, Inc. [http://www.workforceflorida.com/news/WIA_Plan09.htm]

Georgia:

- ☛ Georgia Department of Labor [<http://www.dol.state.ga.us/>]
- ☛ Governor's Office of Workforce Development [<http://www.owd.alabama.gov/>]

Kentucky:

- ☛ Kentucky Office of Employment and Training [<http://oet.ky.gov/>]

eta EMPLOYMENT AND TRAINING ADMINISTRATION
UNITED STATES DEPARTMENT OF LABOR

Region 3 State Contacts
(continued)

North Carolina:

- ☛ North Carolina Department of Commerce (WIA) [<http://www.nccommerce.com/en>]
- ☛ North Carolina Employment Security Commission (ES/UI) [<https://www.ncesc.com/default.aspx>]

South Carolina:

- ☛ South Carolina Department of Commerce (WIA) [<http://www.sccommerce.com/>]
- ☛ South Carolina Employment Security Commission (ES/UI) [<http://www.sces.org/>]

Mississippi:

- ☛ Mississippi Department of Employment Security [<http://www.mdes.ms.gov/wps/portal>]

Tennessee:

- ☛ Tennessee Department of Labor and Workforce Development [<http://www.state.tn.us/labor-wfd/>]


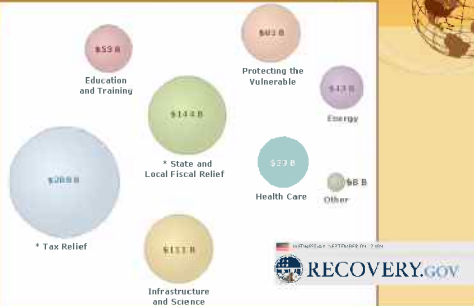
eta EMPLOYMENT AND TRAINING ADMINISTRATION
UNITED STATES DEPARTMENT OF LABOR

3. Current & Upcoming: ARRA



eta EMPLOYMENT AND TRAINING ADMINISTRATION
U.S. DEPARTMENT OF LABOR


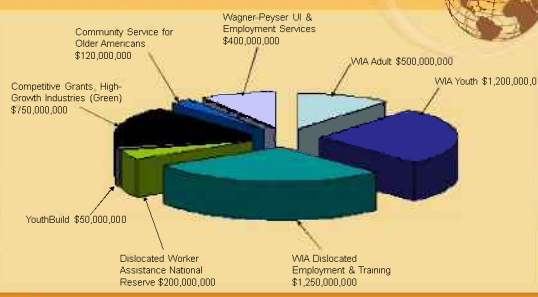
ARRA: The Big Picture

eta EMPLOYMENT AND TRAINING ADMINISTRATION
U.S. DEPARTMENT OF LABOR

RECOVERY.gov

Summary of Economic Stimulus Bill for DOL-ETA

eta EMPLOYMENT AND TRAINING ADMINISTRATION
U.S. DEPARTMENT OF LABOR

Construction-Related ARRA Funding



- Corps of Engineers (\$2,000,000,000)
<http://www.usace.army.mil/recovery/Pages/default.aspx>
- Dept. of Agriculture (\$24,000,000)
<http://www.usda.gov/recovery/> <http://www.nirde.usda.gov/>
- National Institute of Standards and Technology (\$360,000,000)
<http://www.nist.gov/recovery/>
- National Oceanic and Atmospheric Administration (\$600,000,000)
<http://www.noaa.gov/recovery/>
- National Science Foundation (\$400,000,000)
<http://www.nsf.gov/recovery/>
- Dept of Homeland Security, U.S. Customs and Border Protection (\$420,000,000)
<http://www.dhs.gov/recovery/>
- Dept of Health & Human Services (\$2,500,000,000)
<http://www.hhs.gov/recovery/>

eta EMPLOYMENT AND TRAINING ADMINISTRATION
U.S. DEPARTMENT OF LABOR

4. Connecting to Grant Opportunities



4. Connecting to Grant Opportunities

eta EMPLOYMENT AND TRAINING ADMINISTRATION
U.S. DEPARTMENT OF LABOR

For Construction Contractor Interested in Seeking Grant Opportunities

Prospective Grantee:



- ✎ Coordinate with DOL National office for documentation - www.grants.gov (POC listed for each grant)
- ✎ Register w/ Central Contractor Registration (CCR): <https://www.bpn.gov/ccr/default.aspx>
- ✎ Review requirements - Determine if you should be a direct grant recipient or sub-recipient - Visit local One-Stop to locate and/or partner with Community-based Organization, Community College, or YouthBuild Program (training and placement)
- ✎ Applicant Resources (tools, documents, user guides, animated tutorials, and other information) can be found at <http://www.grants.gov/applicants/resources.jsp>

eta EMPLOYMENT AND TRAINING ADMINISTRATION
U.S. DEPARTMENT OF LABOR



5. Other Resources

eta EMPLOYMENT AND TRAINING ADMINISTRATION
U.S. DEPARTMENT OF LABOR



Workforce3One.org



eta EMPLOYMENT AND TRAINING ADMINISTRATION
U.S. DEPARTMENT OF LABOR




For additional background information about the industry and details on grants, information about employment and training opportunities and workforce development tools for employers, educators and workforce professionals:

-  www.doleta.gov/BRG
-  www.careervoyages.gov
-  www.careeronestop.org

eta EMPLOYMENT AND TRAINING ADMINISTRATION
U.S. DEPARTMENT OF LABOR

Questions?



eta EMPLOYMENT AND TRAINING ADMINISTRATION
U.S. DEPARTMENT OF LABOR

ETA Atlanta Regional Office

Lloyd "Pete" Fleming
U.S. Department of Labor
Employment and Training Administration
61 Forsyth Street S.W.
Suite 6M12
Atlanta, GA 30303
Website: <http://www.doleta.gov/Regions>
Email: fleming.lloyd@dol.gov
(404) 302-5356

Thank You!



eta EMPLOYMENT AND TRAINING ADMINISTRATION
U.S. DEPARTMENT OF LABOR
